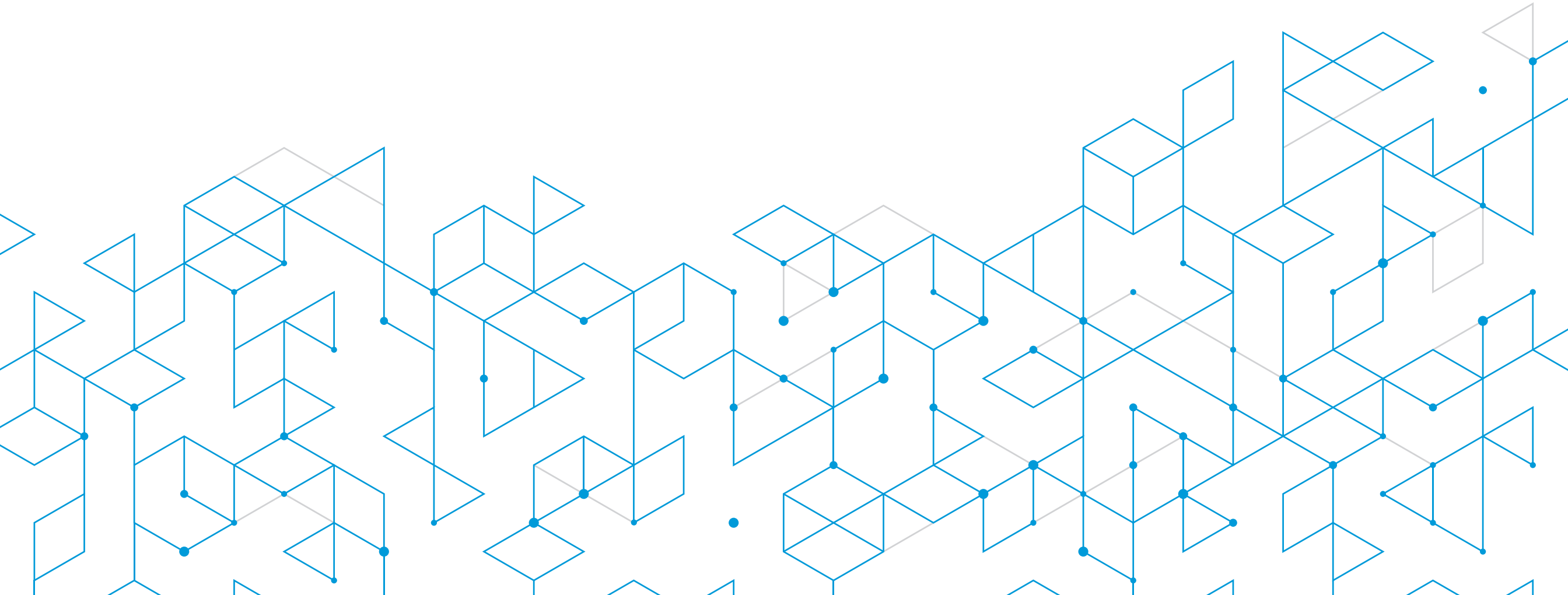




Department of  
Land Use & Transportation

# Building Services Activity

————— 1985–Present

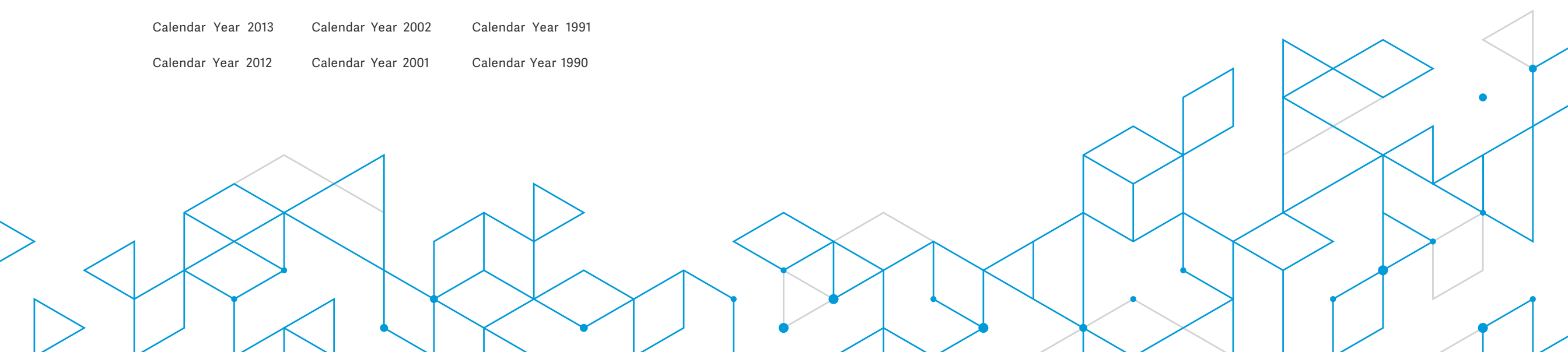


# Building Services Activity

1985–Present

## Table of Contents

Calendar Year 2022	Calendar Year 2011	Calendar Year 2000	Calendar Year 1999
Calendar Year 2021	Calendar Year 2010	Calendar Year 1999	Calendar Year 1988
Calendar Year 2020	Calendar Year 2009	Calendar Year 1998	Calendar Year 1987
Calendar Year 2019	Calendar Year 2008	Calendar Year 1997	Calendar Year 1986
Calendar Year 2018	Calendar Year 2007	Calendar Year 1996	Calendar Year 1985
Calendar Year 2017	Calendar Year 2006	Calendar Year 1995	
Calendar Year 2016	Calendar Year 2005	Calendar Year 1994	
Calendar Year 2015	Calendar Year 2004	Calendar Year 1993	
Calendar Year 2014	Calendar Year 2003	Calendar Year 1992	
Calendar Year 2013	Calendar Year 2002	Calendar Year 1991	
Calendar Year 2012	Calendar Year 2001	Calendar Year 1990	





**Washington County Building Services  
Activity  
Calendar Year 2022**

	January	February	March	April	May	June	July	August	September	October	November	December	Year to Date Total
<b>Plan Review</b>													
Plans Submitted	277	226	305	299	250	211	159	318	314	540	277	190	3,366
Grading Submitted	20	16	17	16	10	7	5	21	21	25	16	12	186
Plans Approved	221	223	338	301	211	309	219	215	181	260	291	277	3,046
Deferred Approved	3	8	8	14	8	28	4	5	5	7	9	18	117
Revisions Approved	23	29	35	33	23	28	33	18	16	44	37	15	334
<b>Plan Review Average</b>													
Residential	4-5 weeks	5-6 weeks	5-6 weeks	5-6 weeks	4-6 weeks	5 weeks	4-6 weeks	4-5 weeks	3-4 weeks	3-4 weeks	4-5 weeks	4 weeks	-
Commercial	6-7 weeks	7-8 weeks	7-8 weeks	7-8 weeks	4-6 weeks	6 weeks	4-6 weeks	4-5 weeks	4-5 weeks	4-5 weeks	5-6 weeks	4-5 weeks	-
Development Services Review	10-12 weeks	11-13 weeks	11-13 weeks	11-13 weeks	10-12 weeks	13-14 weeks	20 weeks	22 weeks	20-21 weeks	20-21 weeks	21-22 weeks	19-20 weeks	-
<b>Building Assistance</b>													
Counter	60	51	115	131	216	181	189	274	163	194	147	109	1,830
Files Finaled	871	907	1,128	967	1,003	1,019	1010	1,196	1147	1121	1013	1099	12,481
<b>Permits Issued</b>													
Single Family Res - New	39	71	42	55	49	29	35	56	48	43	33	45	545
Single Family Res - Add/Remodel	81	75	94	92	77	46	115	148	128	163	160	105	1,284
Multi Family - Bldgs/Units	1/6	0	0/0	0/0	0/0	1/82	0/0	0/0	1/54	1/13	1/71	0/0	-
Commercial/Industrial	2	1	6	2	0	0	1	1	1	9	1	4	28
Commercial - Add/Remodel	42	25	71	41	62	37	30	35	25	38	60	35	501
Manufactured Homes	0	1	3	2	2	1	0	0	2	2	0	6	19
Miscellaneous	39	37	61	59	50	44	49	45	42	49	36	35	546
Electrical	416	375	464	396	490	544	480	510	561	474	379	385	5,474
Plumbing	116	125	147	133	175	134	155	161	151	146	154	133	1,730
Mechanical	316	347	365	363	377	404	402	465	376	323	355	332	4,425
<b>Total</b>	<b>1,052</b>	<b>1,057</b>	<b>1,253</b>	<b>1,143</b>	<b>1,282</b>	<b>1,240</b>	<b>1,267</b>	<b>1,421</b>	<b>1,335</b>	<b>1,248</b>	<b>1,179</b>	<b>1,080</b>	<b>14,552</b>
<b>Inspections</b>													
Structural	992	1,148	1,428	1,414	1,336	1,437	1,156	1,358	1,285	1,313	1,143	1,032	15,042
Mechanical	611	726	868	764	731	839	794	920	878	841	684	670	9,326
Electrical	934	955	1,193	1,048	1,089	1,072	1,028	1,149	1,122	1,165	1,054	1,040	12,849
Electrical Master Permits	1	1	0	0	0	1	1	0	0	1	1	0	6
Grading	18	26	29	26	20	13	13	29	12	23	12	25	246
Plumbing	668	942	1,058	973	894	995	826	1,062	960	972	855	779	10,984
<b>Total</b>	<b>3,224</b>	<b>3,798</b>	<b>4,576</b>	<b>4,225</b>	<b>4,070</b>	<b>4,357</b>	<b>3,818</b>	<b>4,518</b>	<b>4,257</b>	<b>4,315</b>	<b>3,749</b>	<b>3,546</b>	<b>48,453</b>
<b>Financial</b>													
Fees	\$ 616,841	\$ 622,425	\$ 615,937	\$ 994,113	\$ 606,525	\$ 760,959	\$ 677,268	\$ 725,668	\$ 971,136	\$ 1,051,249	\$ 734,476	\$ 730,971	\$ 9,107,568
Valuation	32,770,205	36,972,642	25,670,845	82,637,400	60,039,607	44,689,124	19,862,881	30,602,659	69,049,590	50,173,770	38,094,024	40,476,671	531,039,418



**Washington County Building Services  
Activity  
Calendar Year 2021**

	January	February	March	April	May	June	July	August	September	October	November	December	Year to Date Total
<b>Plan Review</b>													
Plans Submitted	246	267	290	292	284	337	265	289	211	257	294	249	3,281
Grading Submitted	14	16	22	24	12	19	17	10	10	14	10	27	195
Plans Approved	421	315	408	349	318	353	411	297	271	235	206	215	3,799
Deferred Approved	9	12	16	11	15	33	29	18	8	9	8	5	173
Revisions Approved	21	23	29	20	24	45	18	20	29	25	22	29	305
<b>Plan Review Average</b>													
Residential	2-4 Weeks	2-4 Weeks	2-4 Weeks	3-4 Weeks	3-4 Weeks	3-4 Weeks	4-5 Weeks	4-5 Weeks	4-5 Weeks	4-5 Weeks	3-4 Weeks	4-5 Weeks	-
Commercial	3-5 Weeks	3-5 Weeks	3-5 Weeks	6 Weeks	5-6 Weeks	5-6 Weeks	6-7 Weeks	7-8 Weeks	7-8 Weeks	7-8 Weeks	7-8 Weeks	6-7 weeks	-
Development Services Review	-	-	-	-	-	-	90 days	90 days	90 days	90 days	90 days	10-12 weeks	-
<b>Building Assistance</b>													
Counter	30	52	156	162	172	176	166	154	141	121	146	103	1,579
Files Finaled	812	807	1,010	1,045	844	1,076	802	884	988	976	932	848	11,024
<b>Permits Issued</b>													
Single Family Res - New	33	36	50	60	39	38	75	60	55	32	15	20	513
Single Family Res - Add/Remodel	67	61	84	122	72	103	94	107	71	92	112	93	1,078
Multi Family - Bldgs/Units	0/0	0/0	1/3	0/0	4/24	0/0	0/0	0/0	0/0	0/0	0/0	1/56	-
Commercial/Industrial	6	3	3	3	1	3	2	4	4	4	1	1	35
Commercial - Add/Remodel	45	42	51	41	44	94	56	51	46	53	18	32	573
Manufactured Homes	2	1	0	3	1	1	1	1	2	1	1	0	14
Miscellaneous	41	47	50	52	37	75	67	61	48	42	42	24	586
Electrical	387	371	431	483	383	514	414	398	408	411	401	327	4,928
Plumbing	136	147	177	177	144	161	151	168	210	182	130	123	1,906
Mechanical	266	239	349	318	329	411	422	347	334	367	301	307	3,990
<b>Total</b>	<b>983</b>	<b>947</b>	<b>1,196</b>	<b>1,259</b>	<b>1,054</b>	<b>1,400</b>	<b>1,282</b>	<b>1,197</b>	<b>1,178</b>	<b>1,184</b>	<b>1,021</b>	<b>927</b>	<b>13,623</b>
<b>Inspections</b>													
Structural	1,201	1,059	1,733	1,391	1,251	1,349	1,240	1,346	1,160	1,263	1,079	1,113	15,185
Mechanical	755	633	831	764	625	727	607	708	737	763	656	603	8,409
Electrical	856	812	1,026	1,079	879	1,027	981	1,043	967	1,060	990	864	11,584
Electrical Master Permits	0	1	1	0	0	2	3	0	0	0	1	0	8
Grading	14	27	25	28	14	16	19	24	28	15	21	23	254
Plumbing	742	836	1,044	982	890	916	817	876	966	934	737	758	10,498
<b>Total</b>	<b>3,568</b>	<b>3,368</b>	<b>4,660</b>	<b>4,244</b>	<b>3,659</b>	<b>4,037</b>	<b>3,667</b>	<b>3,997</b>	<b>3,858</b>	<b>4,035</b>	<b>3,484</b>	<b>3,361</b>	<b>45,938</b>
<b>Financial</b>													
Fees	\$ 516,599	\$ 501,005	\$ 696,786	\$ 570,186	\$ 435,426	\$ 854,348	\$ 776,366	\$ 692,047	\$ 638,623	\$ 542,782	\$ 513,434	\$ 678,003	\$ 7,415,605
Valuation	28,755,953	23,891,272	30,524,047	33,349,898	21,911,313	31,195,419	41,273,859	38,238,936	31,263,139	21,546,452	11,373,843	45,318,877	358,643,008



**Washington County Building Services  
Activity  
Calendar Year 2020**

	January	February	March	April	May	June	July	August	September	October	November	December	Year to Date Total
<b>Plan Review</b>													
Plans Submitted	166	201	252	216	191	272	281	296	230	285	217	224	2,831
Plans Approved	367	381	436	23	177	155	175	154	267	378	271	329	3,113
Deferred Approved	43	38	34	19	19	18	7	7	13	23	17	17	255
Revisions Approved	39	47	37	38	23	14	31	34	7	20	9	13	312
Grading Submitted	12	16	12	17	20	19	13	18	16	20	11	8	182
<b>Plan Review Average</b>													
Residential	2-3 Weeks	2-3 Weeks	2-4 Weeks	2-4 Weeks	2-4 Weeks	2-3 Weeks	2-3 Weeks	2-3 Weeks	2-3 Weeks	2-3 Weeks	2-3 Weeks	2-3 Weeks	-
Commercial	4-8 Weeks	4-8 Weeks	2-4 Weeks	2-4 Weeks	2-4 Weeks	4-6 Weeks	4-6 Weeks	4-6 Weeks	4-6 Weeks	4-6 Weeks	3-5 Weeks	3-5 Weeks	-
<b>Building Assistance</b>													
Counter	679	751	490	0	0	289	271	254	242	289	111	27	3,403
Files Finaled	876	1015	877	686	725	958	917	1,354	838	1061	940	983	11,230
<b>Permits Issued</b>													
Single Family Res - New	56	67	43	19	19	46	45	54	54	58	54	47	562
Single Family Res - Add/Remodel	24	47	51	36	45	58	84	74	53	89	105	73	739
Multi Family - Bldgs/Units	0/0	0/0	2/42	0/0	0/0	0/0	1/26	0/0	0/0	0/0	0/0	4/84	
Commercial/Industrial	9	9	2	2	2	3	3	9	5	2	0	2	48
Commercial - Add/Remodel	31	37	46	24	30	40	41	20	31	58	41	22	421
Manufactured Homes	1	1	9	2	2	1	4	3	0	3	0	2	28
Miscellaneous	36	37	51	35	39	46	50	71	57	53	51	22	548
Electrical	408	355	395	334	306	438	382	411	356	501	353	334	4,573
Plumbing	146	124	154	118	138	165	169	189	170	183	118	131	1,805
Mechanical	278	218	279	192	278	398	347	412	299	364	346	308	3,719
<b>Total</b>	<b>989</b>	<b>895</b>	<b>1,032</b>	<b>762</b>	<b>859</b>	<b>1,195</b>	<b>1,126</b>	<b>1,243</b>	<b>1,025</b>	<b>1,311</b>	<b>1,068</b>	<b>945</b>	<b>12,443</b>
<b>Inspections</b>													
Structural	1,523	1,558	1,789	1,699	1,177	1,321	1,226	1,340	1,185	1,400	1,139	1,236	16,593
Mechanical	728	756	780	681	585	714	732	690	691	809	704	740	8,610
Electrical	962	929	1,105	891	885	961	965	917	888	1,028	976	918	11,425
Electrical Master Permits	3	1	0	1	7	7	1	3	1	6	2	2	34
Plumbing	1,077	952	1,236	966	719	979	997	871	960	1,127	934	916	11,734
<b>Total</b>	<b>4,293</b>	<b>4,196</b>	<b>4,910</b>	<b>4,238</b>	<b>3,373</b>	<b>3,982</b>	<b>3,921</b>	<b>3,821</b>	<b>3,725</b>	<b>4,370</b>	<b>3,755</b>	<b>3,812</b>	<b>48,396</b>
<b>Financial</b>													
Fees	\$ 617,537	\$ 691,594	\$ 726,566	\$ 338,674	\$ 442,312	\$ 615,627	\$ 522,357	\$ 629,893	\$ 496,042	\$ 657,296	\$ 475,325	\$ 614,105	\$ 6,827,328
Valuation	28,467,844	67,620,465	40,979,628	35,341,671	28,515,534	53,918,969	25,172,739	37,366,268	29,630,003	38,782,647	24,144,179	32,712,802	442,652,749



**Washington County Building Services  
Activity  
Calendar Year 2019**

	January	February	March	April	May	June	July	August	September	October	November	December	Year to Date Total
<b>Plan Review</b>													
Plans Submitted	213	204	232	322	338	261	234	247	192	205	147	206	2,801
Plans Approved	323	295	273	293	387	376	312	420	310	343	396	375	4,103
Deferred Approved	4	4	6	14	12	4	9	39	40	15	25	18	190
Revisions Approved	49	27	23	22	23	26	37	29	13	30	37	35	351
Grading Submitted	16	13	20	23	20	27	10	8	8	18	10	15	188
<b>Plan Review Average</b>													
Residential	4-6 Weeks	4-6 Weeks	4-6 Weeks	2-3 Weeks	2-3 Weeks	2-3 Weeks	2-3 Weeks	2-3 Weeks	2-3 Weeks	2-3 Weeks	2-3 Weeks	2-3 Weeks	-
Commercial	5 Weeks	5 Weeks	5 Weeks	3-4 Weeks	3-4 Weeks	3-4 Weeks	4-8 Weeks	4-8 Weeks	4-8 Weeks	4-8 Weeks	4-8 Weeks	4-8 Weeks	-
<b>Building Assistance</b>													
Counter	779	746	799	865	949	778	825	840	797	798	687	908	9,771
Files Finaled	177	100	148	141	143	113	130	137	919	935	870	1068	4,881
<b>Permits Issued</b>													
Single Family Res - New	67	54	85	59	66	79	60	72	93	55	40	55	785
Single Family Res - Add/Remodel	58	78	50	66	74	78	75	69	78	93	28	21	768
Multi Family - Bldgs/Units	0/0	0/0	0/0	1/16	1/6	0/0	1/10	0/0	0/0	0/0	1/21	2/42	
Commercial/Industrial	2	7	2	6	1	2	3	4	6	3	2	3	41
Commercial - Add/Remodel	64	25	34	56	57	78	55	44	49	28	33	19	542
Manufactured Homes	2	5	4	1	1	3	13	3	2	0	2	3	39
Miscellaneous	34	33	44	51	62	59	49	54	58	47	30	30	551
Electrical	429	337	434	424	425	431	442	355	310	401	374	295	4,657
Plumbing	150	121	125	147	166	151	158	187	129	155	107	123	1,719
Mechanical	267	219	260	257	335	336	327	289	219	344	265	231	3,349
<b>Total</b>	<b>1,073</b>	<b>879</b>	<b>1,038</b>	<b>1,068</b>	<b>1,188</b>	<b>1,217</b>	<b>1,183</b>	<b>1,077</b>	<b>944</b>	<b>1,126</b>	<b>882</b>	<b>782</b>	<b>12,451</b>
<b>Inspections</b>													
Structural	2,082	1,985	2,431	2,586	2,470	2,255	2,465	2,495	2,208	2,504	1,432	1,363	26,276
Mechanical	806	715	820	881	977	895	908	1,018	785	917	749	709	10,180
Electrical	1,249	1,151	1,353	1,335	1,393	1,226	1,376	1,396	1,108	1,215	903	904	14,609
Electrical Master Permits	9	4	0	7	14	2	1	3	2	1	1	4	48
Plumbing	1,061	1,027	1,231	1,268	1,208	1,229	1,391	1,316	1,060	1,269	1,085	1,042	14,187
<b>Total</b>	<b>5,207</b>	<b>4,882</b>	<b>5,835</b>	<b>6,077</b>	<b>6,062</b>	<b>5,607</b>	<b>6,141</b>	<b>6,228</b>	<b>5,163</b>	<b>5,906</b>	<b>4,170</b>	<b>4,022</b>	<b>65,300</b>
<b>Financial</b>													
Fees	\$ 541,867	\$ 432,837	\$ 588,174	\$ 599,893	\$ 834,255	\$ 761,905	\$ 531,647	\$ 691,490	\$ 584,278	\$ 557,052	\$ 447,354	\$ 572,416	\$ 7,143,168
Valuation	39,531,429	19,226,318	32,368,362	26,386,163	37,157,799	67,225,330	35,154,411	42,868,516	37,330,024	26,925,013	32,212,959	31,111,632	427,497,956



**Washington County Building Services  
Activity  
Calendar Year 2018**

	January	February	March	April	May	June	July	August	September	October	November	December	Year to Date Total
<b>Plan Review</b>													
Plans Submitted	279	261	316	364	312	311	279	319	238	262	199	249	3,389
Plans Approved	333	336	388	389	384	399	374	398	305	373	282	305	4,266
Deferred Approved	10	35	19	16	10	14	20	24	9	23	9	8	197
Revisions Approved	38	28	49	24	31	42	42	30	29	34	29	29	405
Grading Submitted	16	18	22	22	25	20	20	28	11	16	12	15	225
<b>Plan Review Average</b>													
Residential	3 Weeks	3 Weeks	4.5 Weeks	4.5 Weeks	4.5 Weeks	4-6 Weeks	7 Weeks	4-6 Weeks	4-6 Weeks	4-6 Weeks	4-6 Weeks	4-6 Weeks	-
Commercial	5 Weeks	5 Weeks	5.4 Weeks	5.4 Weeks	5.4 Weeks	6-8 Weeks	8 Weeks	7 Weeks	5 Weeks	5 Weeks	5 Weeks	5 Weeks	-
<b>Building Assistance</b>													
Counter	742	708	791	829	938	949	794	927	772	914	688	642	9,694
Files Finaled	861	595	507	322	380	351	320	242	198	205	149	175	4,305
<b>Permits Issued</b>													
Single Family Res - New	37	24	19	21	26	28	18	35	75	42	30	47	402
Single Family Res - Add/Remodel	95	70	81	65	91	116	80	88	84	78	64	48	960
Multi Family - Bldgs/Units	3/63	2/42	2/31	0/0	1/16	1/10	0/0	1/10	0/0	0/0	0/0	0/0	10/172
Commercial/Industrial	1	2	5	2	2	1	5	6	2	7	5	4	42
Commercial - Add/Remodel	39	52	72	52	38	41	51	33	38	41	36	24	517
Manufactured Homes	3	7	3	5	8	9	3	7	7	2	1	2	57
Miscellaneous	52	47	38	66	63	57	71	78	46	65	41	41	665
Electrical	452	406	467	472	443	465	491	469	404	398	307	337	5,111
Plumbing	155	160	146	168	187	195	138	174	144	154	148	152	1,921
Mechanical	295	236	306	295	377	405	364	378	269	306	289	213	3,733
<b>Total</b>	<b>1,132</b>	<b>1,006</b>	<b>1,139</b>	<b>1,146</b>	<b>1,236</b>	<b>1,318</b>	<b>1,221</b>	<b>1,269</b>	<b>1,069</b>	<b>1,093</b>	<b>921</b>	<b>868</b>	<b>13,418</b>
<b>Inspections</b>													
Structural	2,175	1,941	2,338	2,309	2,564	2,296	2,172	2,558	1,946	2,488	1,995	1,856	26,638
Mechanical	898	869	941	911	982	1,043	859	1,069	833	1,034	910	847	11,196
Electrical	1,305	1,272	1,470	1,292	1,411	1,448	1,413	1,574	1,307	1,472	1,219	1,102	16,285
Electrical Master Permits	7	8	5	9	9	4	7	0	4	5	1	1	60
Plumbing	1,379	1,242	1,409	1,321	1,672	1,452	1,287	1,431	1,368	1,529	1,130	1,023	16,243
<b>Total</b>	<b>5,764</b>	<b>5,332</b>	<b>6,163</b>	<b>5,842</b>	<b>6,638</b>	<b>6,243</b>	<b>5,738</b>	<b>6,632</b>	<b>5,458</b>	<b>6,528</b>	<b>5,255</b>	<b>4,829</b>	<b>70,422</b>
<b>Financial</b>													
Fees	\$ 583,391	\$ 536,012	\$ 588,345	\$ 798,002	\$ 757,671	\$ 655,789	\$ 525,187	\$ 858,904	\$ 581,104	\$ 589,568	\$ 413,896	\$ 548,682	\$ 7,436,551
Valuation	29,577,585	18,135,656	16,882,557	25,540,273	23,275,114	21,701,191	16,576,557	18,166,840	30,748,694	20,079,111	20,263,712	18,038,041	258,985,331



**Washington County Building Services  
Activity  
Calendar Year 2017**

	January	February	March	April	May	June	July	August	September	October	November	December	Year to Date Total
<b>Plan Review</b>													
Plans Submitted	189	219	287	253	361	279	243	397	281	244	197	277	3,227
Plans Approved	347	345	394	396	432	367	334	448	340	417	298	308	4,426
Deferred Approved	16	27	15	22	16	10	13	18	14	8	11	11	181
Revisions Approved	19	20	24	44	39	35	21	38	30	34	32	42	378
Grading Submitted	8	20	20	26	27	21	18	26	19	10	10	9	214
<b>Plan Review Average</b>													
Residential	3 Weeks	3 Weeks	3 Weeks	3 Weeks	3 Weeks	3 Weeks	3 Weeks	3 Weeks	3 Weeks	3 Weeks	3 Weeks	3 Weeks	-
Commercial	5 Weeks	5 Weeks	5 Weeks	5 Weeks	5 Weeks	5 Weeks	5 Weeks	5 Weeks	5 Weeks	5 Weeks	5 Weeks	5 Weeks	-
<b>Building Assistance</b>													
Counter	504	598	734	748	922	935	847	931	802	869	736	611	9,237
Files Finaled	764	835	1,051	949	1,007	1,199	1015	1,270	1097	1160	1061	1056	12,464
<b>Permits Issued</b>													
Single Family Res - New	71	110	66	39	69	59	36	61	34	37	59	31	672
Single Family Res - Add/Remodel	47	67	108	87	127	99	80	130	74	86	110	61	1,076
Multi Family - Bldgs/Units	0	1/12	2/28	0	0	1/32	1/98	0	0	0	0	4/46	3/40
Commercial/Industrial	3	6	1	0	1	7	1	5	2	2	0	1	29
Commercial - Add/Remodel	32	28	29	26	41	40	31	72	51	46	40	40	476
Manufactured Homes	1	7	0	2	6	1	3	3	3	4	4	4	38
Miscellaneous	47	33	63	52	73	97	62	86	54	53	57	46	723
Electrical	347	387	491	394	472	503	474	449	448	459	460	390	5,274
Plumbing	151	133	196	163	190	196	188	189	159	172	120	92	1,949
Mechanical	264	275	253	247	312	382	337	382	295	311	321	321	3,700
<b>Total</b>	<b>963</b>	<b>1,047</b>	<b>1,209</b>	<b>1,010</b>	<b>1,291</b>	<b>1,385</b>	<b>1,213</b>	<b>1,377</b>	<b>1,120</b>	<b>1,170</b>	<b>1,171</b>	<b>990</b>	<b>13,938</b>
<b>Inspections</b>													
Structural	1,811	2,167	2,807	2,281	2,286	2,525	2,181	2,697	2,369	2,370	2,352	1,970	27,816
Mechanical	638	792	1032	877	1,018	1,031	946	1,095	1,002	1,086	884	895	11,296
Electrical	1,068	1,146	1,461	1,296	1,470	1,505	1,290	1,564	1,328	1,470	1,236	1,268	16,102
Electrical Master Permits	4	9	14	14	13	4	8	6	4	10	10	4	100
Plumbing	1,174	1,503	1,660	1,473	1,597	1,536	1,419	1,429	1,305	1,442	1,371	1,081	16,990
<b>Total</b>	<b>4,695</b>	<b>5,617</b>	<b>6,974</b>	<b>5,941</b>	<b>6,384</b>	<b>6,601</b>	<b>5,844</b>	<b>6,791</b>	<b>6,008</b>	<b>6,378</b>	<b>5,853</b>	<b>5,218</b>	<b>72,304</b>
<b>Financial</b>													
Fees	\$ 1,327,147	\$ 1,320,977	\$ 1,134,097	\$ 979,306	\$ 904,986	\$ 695,778	\$ 673,914	\$ 1,273,977	\$ 507,841	\$ 593,340	\$ 560,360	\$ 605,863	\$ 10,577,586
Valuation	72,342,332	193,313,909	30,890,311	20,242,964	37,898,964	43,149,340	39,343,629	51,321,846	18,582,523	26,175,189	38,888,677	26,300,422	598,450,106





**Washington County Building Services  
Activity  
Calendar Year 2016**

	January	February	March	April	May	June	July	August	September	October	November	December	Year to Date Total
<b>Plan Review</b>													
Plans Submitted	271	276	337	335	356	321	305	314	298	274	310	212	3,609
Plans Approved	330	384	396	461	447	460	439	495	425	408	366	362	4,973
Pending Residential	122	111	133	110	132	76	61	70	69	76	127	68	-
Pending Commercial	33	37	33	44	55	35	45	41	21	32	34	27	-
Deferred Approved						41	21	21	19	20	8	24	154
Revisions Approved						28	95	33	40	25	26	15	262
Grading Submitted	7	19	27	26	23	46	19	24	21	17	15	15	259
<b>Plan Review Average</b>													
Residential	3 Weeks	3 Weeks	3 Weeks	3 Weeks	3 Weeks	3 Weeks	3 Weeks	3 Weeks	3 Weeks	3 Weeks	3 Weeks	3 Weeks	-
Commercial	5 Weeks	5 Weeks	5 Weeks	5 Weeks	5 Weeks	5 Weeks	5 Weeks	5 Weeks	5 Weeks	5 Weeks	5 Weeks	5 Weeks	-
<b>Building Assistance</b>													
Counter	589	785	847	836	871	835	780	964	822	642	633	485	9,089
Files Finaled	904	927	1,173	1,049	1,006	1,128	1003	1,239	1073	1052	1031	896	12,481
<b>Permits Issued</b>													
Single Family Res - New	106	121	108	85	76	83	67	74	71	90	69	70	1,020
Single Family Res - Add/Remodel	58	57	68	106	95	100	85	121	116	85	92	71	1,054
Multi Family - Bldgs/Units	0	3 / 47	3 / 162	3 / 30	0	0	0	0	0	0	2/20	0	-
Commercial/Industrial	7	0	6	6	5	7	9	7	3	2	10	0	62
Commercial - Add/Remodel	36	58	33	45	48	55	42	60	55	43	39	27	541
Manufactured Homes	1	1	8	4	11	5	2	5	5	2	3	3	50
Miscellaneous	36	49	67	76	81	113	72	90	89	66	55	51	845
Electrical	353	364	451	459	455	466	425	500	438	370	384	287	4,952
Plumbing	204	169	186	253	282	268	170	191	177	163	162	173	2,398
Mechanical	230	197	227	266	319	397	300	301	255	253	295	256	3,296
<b>Total</b>	<b>1,031</b>	<b>1,019</b>	<b>1,157</b>	<b>1,303</b>	<b>1,372</b>	<b>1,494</b>	<b>1,172</b>	<b>1,349</b>	<b>1,209</b>	<b>1,074</b>	<b>1,111</b>	<b>938</b>	<b>14,218</b>
<b>Inspections</b>													
Structural	1,887	2,377	2,872	2,456	2,681	2,784	2,421	2,826	2,389	2,104	2,037	1938	28,772
Mechanical	764	905	917	898	926	1,030	960	1,154	980	875	802	719	10,930
Electrical	872	1,256	1,430	1,349	1,401	1,406	1,307	1,591	1,405	1,249	1,294	1142	15,702
Electrical Master Permits	10	15	6	12	5	11	5	8	10	6	11	11	110
Plumbing	1,314	1,648	1,939	1,708	1,815	1,691	1,379	1,606	1,505	1,363	1,341	1024	18,333
<b>Total</b>	<b>4,847</b>	<b>6,201</b>	<b>7,164</b>	<b>6,423</b>	<b>6,828</b>	<b>6,922</b>	<b>6,072</b>	<b>7,185</b>	<b>6,289</b>	<b>5,597</b>	<b>5,485</b>	<b>4,834</b>	<b>73,847</b>
<b>Financial</b>													
Fees	\$ 899,977	\$ 803,897	\$ 1,123,105	\$ 1,151,157	\$ 739,266	\$ 845,558	\$ 752,836	\$ 951,072	\$ 728,874	\$ 635,531	\$ 670,072	\$ 631,691	\$ 9,933,036
Valuation	70,156,214	60,367,969	84,930,659	124,127,918	35,724,801	48,177,098	75,236,034	82,603,563	53,096,714	37,083,905	32,486,889	29,090,121	733,081,885



**Washington County Building Services  
Activity  
Calendar Year 2015**

	January	February	March	April	May	June	July	August	September	October	November	December	Year to Date Total
<b>Plan Review</b>													
Plans Submitted	203	221	277	415	352	401	285	263	334	320	274	274	3,619
Plans Approved	305	287	342	448	519	481	396	362	468	410	334	409	4,761
Pending Residential	70	50	77	164	117	117	91	85	105	132	99	105	-
Pending Commercial	24	48	45	45	36	44	35	33	47	23	34	17	-
Grading Submitted	15	13	14	27	17	22	15	20	25	18	13	22	221
<b>Plan Review Average</b>													
Residential	2 Weeks	2 Weeks	3 Weeks	3 Weeks	3 Weeks	3 Weeks	3 Weeks	3 Weeks	3 Weeks	3 Weeks	3 Weeks	3 Weeks	-
Commercial	3-4 Weeks	3-4 Weeks	5 Weeks	5 Weeks	5 Weeks	5 Weeks	5 Weeks	5 Weeks	5 Weeks	5 Weeks	5 Weeks	5 Weeks	-
<b>Building Assistance</b>													
Counter	610	634	789	858	740	918	621	826	836	822	667	654	8,975
Files Finaled	843	815	935	979	802	1,006	994	1,078	952	1095	852	1059	11,410
<b>Permits Issued</b>													
Single Family Res - New	75	65	67	91	140	116	104	65	152	86	86	70	1,117
Single Family Res - Add/Remodel	52	53	62	65	101	92	89	78	100	82	80	26	880
Multi Family - Bldgs/Units	0	1 / 16	0	0	5 / 149	0	0	2 / 26	0	2 / 32	2 / 26	1 / 16	13 / 265
Commercial/Industrial	6	6	5	3	2	4	5	8	1	1	2	5	48
Commercial - Add/Remodel	30	32	45	75	52	63	52	48	64	59	35	31	586
Manufactured Homes	2	4	5	4	0	2	4	4	2	3	1	0	31
Miscellaneous	48	74	82	68	69	89	83	82	79	63	68	48	853
Electrical	361	354	419	368	379	481	476	450	451	436	353	394	4,922
Plumbing	135	133	174	148	127	192	175	206	223	173	214	153	2,053
Mechanical	231	185	286	222	242	358	330	338	270	283	260	250	3,255
<b>Total</b>	<b>940</b>	<b>907</b>	<b>1,145</b>	<b>1,044</b>	<b>1,117</b>	<b>1,397</b>	<b>1,318</b>	<b>1,281</b>	<b>1,342</b>	<b>1,188</b>	<b>1,101</b>	<b>978</b>	<b>13,758</b>
<b>Inspections</b>													
Structural	1,694	1,539	2,050	2,144	2,153	2,611	2,352	2,320	2,194	2,444	1,767	2095	25,363
Mechanical	747	614	700	776	660	816	788	873	800	962	746	832	9,314
Electrical	1,020	1,107	1,168	1,193	1,081	1,216	1,306	1,442	1,244	1,504	1,171	1323	14,775
Electrical Master Permits	12	6	15	6	5	11	10	11	11	7	11	11	116
Plumbing	977	993	1,241	1,174	1,205	1,521	1,505	1,424	1,461	1,541	1,199	1425	15,666
<b>Total</b>	<b>4,450</b>	<b>4,259</b>	<b>5,174</b>	<b>5,293</b>	<b>5,104</b>	<b>6,175</b>	<b>5,961</b>	<b>6,070</b>	<b>5,710</b>	<b>6,458</b>	<b>4,894</b>	<b>5,686</b>	<b>65,234</b>
<b>Financial</b>													
Fees	\$ 715,886	\$ 1,033,415	\$ 655,411	\$ 820,142	\$ 1,098,225	\$ 747,995	\$ 813,337	\$ 1,275,960	\$ 986,997	\$ 700,785	\$ 1,185,636	\$ 845,640	\$ 10,879,429
Valuation	73,246,424	75,502,077	49,648,538	35,669,069	153,465,525	72,789,351	68,426,814	112,778,317	50,660,316	44,435,925	56,605,898	32,667,709	825,895,963



**Washington County Building Services  
Activity  
Calendar Year 2014**

	January 2014	February 2014	March 2014	April 2014	May 2014	June 2014	July 2014	August 2014	September 2014	October 2014	November 2014	December 2014	Year to Date Total
<b>Plan Review</b>													
Plans Submitted	251	228	305	273	291	271	265	362	257	253	203	238	3,197
Plans Approved	299	255	368	352	399	406	379	363	281	343	327	340	4,112
Pending Residential	51	48	74	84	64	55	35	64	116	62	48	41	-
Pending Commercial	35	45	57	47	50	69	68	54	37	48	32	42	-
Grading Submitted	12	17	20	26	21	19	16	18	20	11	9	11	200
<b>Plan Review Average</b>													
Residential	2 Weeks	2 Weeks	2 Weeks	2 Weeks	2 Weeks	2 Weeks	2 Weeks	2 Weeks	2 Weeks	2 Weeks	2 Weeks	2 Weeks	-
Commercial	2.5 Weeks	3 Weeks	3 Weeks	3-4 Weeks	3-4 Weeks	3-4 Weeks	3-4 Weeks	3-4 Weeks	3-4 Weeks	3-4 Weeks	3-4 Weeks	3-4 Weeks	-
<b>Building Assistance</b>													
Counter	605	480	480	786	758	810	660	778	716	748	549	621	7,991
Files Finaled	367	392	340	336	271	178	176	193	129	143	96	100	2,721
<b>Permits Issued</b>													
Single Family Res - New	72	62	65	70	47	73	65	55	40	86	44	58	737
Single Family Res - Add/Remodel	70	45	58	83	70	71	81	71	65	73	56	62	805
Multi Family - Bldgs/Units	1 / 16	0	0	5 / 87	8 / 150	0	1 / 16	11 / 210	7 / 207	5 / 105	0	2 / 24	40 / 815
Commercial/Industrial	7	3	3	2	8	4	1	7	6	4	7	25	77
Commercial - Add/Remodel	30	37	56	51	59	59	71	63	42	42	39	48	597
Public Works & Utilities	0	0	0	0	0	0	0	0	0	0	0	0	-
Manufactured Homes	0	3	3	1	2	3	0	4	0	4	3	3	26
Miscellaneous	43	51	66	50	79	77	117	72	55	61	65	44	780
Electrical	390	318	387	391	441	461	500	421	425	400	333	362	4,829
Plumbing	114	77	132	124	137	206	148	144	125	152	135	114	1,608
Mechanical	197	171	179	193	237	261	293	265	217	248	257	243	2,761
<b>Total</b>	<b>924</b>	<b>767</b>	<b>949</b>	<b>970</b>	<b>1,088</b>	<b>1,215</b>	<b>1,277</b>	<b>1,113</b>	<b>982</b>	<b>1,075</b>	<b>939</b>	<b>961</b>	<b>12,246</b>
<b>Inspections</b>													
Structural	1,612	1,382	1,823	1,928	1,815	1,804	1,887	1,998	1,763	1,951	1,475	1715	21,153
Mechanical	677	503	660	663	641	685	727	728	765	750	587	750	8,136
Electrical	991	972	1,119	1,318	1,188	1,110	1,254	1,367	1,190	1,344	1,046	1119	14,018
Electrical Master Permits	10	11	15	9	9	14	27	6	11	5	17	8	142
Plumbing	906	860	1,052	1,118	928	1,096	1,111	1,146	1,037	1,115	936	1068	12,373
<b>Total</b>	<b>4,196</b>	<b>3,728</b>	<b>4,669</b>	<b>5,036</b>	<b>4,581</b>	<b>4,709</b>	<b>5,006</b>	<b>5,245</b>	<b>4,766</b>	<b>5,165</b>	<b>4,061</b>	<b>4,660</b>	<b>55,822</b>
<b>Financial</b>													
Fees	\$ 694,447	\$ 640,686	\$ 559,723	\$ 732,685	\$ 597,920	\$ 813,201	\$ 674,153	\$ 708,521	\$ 715,340	\$ 626,749	\$ 437,614	\$ 462,275	\$ 7,663,314
Valuation	32,440,200	28,500,942	54,041,730	45,651,311	39,755,786	56,000,292	54,357,153	44,673,856	53,023,727	65,321,382	22,784,986	26,059,983	522,611,348



**Washington County Building Services  
Activity  
Calendar Year 2013**

	January 2013	February 2013	March 2013	April 2013	May 2013	June 2013	July 2013	August 2013	September 2013	October 2013	November 2013	December 2013	Year to Date Total
<b>Plan Review</b>													
Plans Submitted	209	233	240	259	365	211	348	235	215	254	216	205	2,990
Plans Approved	261	245	309	324	366	315	494	364	283	368	254	256	3,839
Number of Reviews	377	321	402	436	480	403	645	465	368	477	328	304	5,006
Pending Residential	32	57	59	50	107	42	71	52	67	53	36	39	-
Pending Commercial	29	42	21	22	39	unavailable	11	6	13	29	40	30	-
Grading Submitted	10	13	20	14	18	21	16	18	8	17	8	5	168
<b>Plan Review Average</b>													
Residential	2 Weeks	2 Weeks	2 Weeks	2 Weeks	2 Weeks	2 Weeks	2 Weeks	2 Weeks	2 Weeks	2 Weeks	2 Weeks	2 Weeks	
Commercial	3.5 Weeks	3.25 Weeks	3.5 Weeks	3.5 Weeks	4 Weeks	4 Weeks	2.5 Weeks	2 Weeks	2.5 Weeks	2.5 Weeks	2.5 Weeks	2.5 Weeks	
<b>Building Assistance</b>													
Counter	625	588	633	707	798	761	817	684	726	718	493	537	8,087
Files Finaled	853	728	783	839	833	821	780	849	676	798	735	772	9,467
<b>Permits Issued</b>													
Single Family Res - New	60	36	42	36	34	52	51	48	77	62	72	37	607
Single Family Res - Add/Remodel	47	32	49	71	62	71	70	75	52	81	46	54	710
Multi Family - Bldgs/Units	1 / 10	4 / 73	12 / 239	2 / 55	0	1 / 29	1 / 26	2 / 23	1 / 24	2 / 24	2 / 42	2 / 47	30 / 592
Commercial/Industrial	0	2	3	5	5	5	1	18	12	3	4	4	62
Commercial - Add/Remodel	54	32	60	42	64	40	75	54	40	47	44	37	589
Public Works & Utilities	0	0	0	0	0	0	0	8	0	0	0	0	8
Manufactured Homes	1	2	2	1	0	3	3	4	3	2	3	3	27
Miscellaneous	42	56	51	48	79	58	88	91	49	70	53	49	734
Electrical	373	410	344	369	440	375	460	365	337	455	306	355	4,589
Plumbing	117	122	124	136	134	118	129	119	112	140	83	90	1,424
Mechanical	236	193	205	191	251	233	260	228	201	287	218	263	2,766
<b>Total</b>	<b>931</b>	<b>889</b>	<b>892</b>	<b>901</b>	<b>1,069</b>	<b>956</b>	<b>1,138</b>	<b>1,012</b>	<b>884</b>	<b>1,149</b>	<b>831</b>	<b>894</b>	<b>11,542</b>
<b>Inspections</b>													
Structural	1,156	1,150	1,178	1,329	1,176	1,461	1,398	1,402	1,418	1,512	1,432	1447	16,059
Mechanical	548	572	521	604	852	623	597	653	558	642	597	626	7,393
Electrical	931	901	998	1,011	1,033	1,025	1,059	1,108	1,060	1,051	995	969	12,141
Electrical Master Permits	13	11	9	6	11	13	6	0	11	13	8	11	112
Plumbing	764	691	767	808	947	771	833	845	891	928	849	820	9,914
<b>Total</b>	<b>3,412</b>	<b>3,325</b>	<b>3,473</b>	<b>3,758</b>	<b>4,019</b>	<b>3,893</b>	<b>3,893</b>	<b>4,008</b>	<b>3,938</b>	<b>4,146</b>	<b>3,881</b>	<b>3,873</b>	<b>45,619</b>
<b>Financial</b>													
Fees	\$ 387,773	\$ 619,052	\$ 680,602	\$ 544,297	\$ 475,041	\$ 415,226	\$ 622,135	\$ 684,782	\$ 481,576	\$ 538,078	\$ 556,509	\$ 358,416	\$ 6,363,487
Valuation	27,705,563	20,984,501	40,751,200	22,893,996	42,864,174	31,465,336	33,288,130	44,809,186	47,035,928	37,741,334	32,640,842	22,594,813	404,775,003



**Washington County Building Services  
Activity  
Calendar Year 2012**

	January 2012	February 2012	March 2012	April 2012	May 2012	June 2012	July 2012	August 2012	September 2012	October 2012	November 2012	December 2012	Year to Date Total
<b>Plan Review</b>													
Submitted	155	201	211	223	249	250	259	263	201	260	178	195	2,645
Completed Reviews	254	260	347	299	429	340	373	427	311	377	307	290	4,014
Pending Residential	21	37	41	35	53	38	39	44	45	36	23	33	445
Pending Commercial	10	20	18	17	18	23	37	17	18	21	21	12	232
Grading	7	5	10	7	15	17	12	14	15	10	4	2	118
<b>Plan Review Average</b>													
Residential	2 Weeks	2 Weeks	2 Weeks	2 Weeks	2 Weeks	2 Weeks	2 Weeks	2 Weeks	2 Weeks	2 Weeks	2 Weeks	2 Weeks	2 Weeks
Commercial	2.5 Weeks	3 Weeks	2.5 Weeks	2.5 Weeks	2.5 Weeks	3 Weeks	3 Weeks	2.5 Weeks	3 Weeks	3 Weeks	3 Weeks	3 Weeks	2.77 Weeks
<b>Building Assistance</b>													
Counter	482	526	567	604	677	665	686	695	699	713	512	477	7,303
Files Finaled	610	691	695	646	756	744	703	797	694	872	884	810	8,902
<b>Permits Issued</b>													
Single Family Res - New	46	36	48	55	50	64	66	36	38	53	23	40	555
Single Family Res - Add/Remodel	52	43	65	55	78	71	62	53	62	68	56	34	699
Multi Family - Bldgs/Units	0	0	0	0	0	0	0	0	2 / 23	0	0	0	-
Commercial/Industrial	1	0	0	0	0	1	1	1	0	1	0	0	5
Commercial - Add/Remodel	49	34	46	25	42	41	50	94	34	38	30	31	514
Public Works & Utilities	0	0	0	1	0	0	0	0	0	0	0	0	1
Manufactured Homes	0	0	3	0	1	4	1	0	2	2	1	2	16
Miscellaneous	43	37	36	48	54	65	67	70	61	56	40	31	608
Electrical	311	250	301	333	345	398	333	391	344	362	347	253	3,968
Plumbing	77	77	93	111	130	126	140	127	123	127	135	69	1,335
Mechanical	209	185	165	174	202	177	231	226	167	233	246	208	2,423
<b>Total</b>	<b>788</b>	<b>662</b>	<b>757</b>	<b>802</b>	<b>902</b>	<b>947</b>	<b>951</b>	<b>998</b>	<b>831</b>	<b>940</b>	<b>878</b>	<b>668</b>	<b>10,124</b>
<b>Inspections</b>													
Structural	928	1,178	1,199	1,277	1,338	1,485	1,573	1,732	1,293	1,476	1,154	1004	15,637
Mechanical	517	537	550	532	538	513	570	663	498	690	605	589	6,802
Electrical	844	902	819	840	978	893	861	1,115	977	1,160	1,094	855	11,338
Electrical Master Permits	7	11	16	7	0	9	5	13	7	9	16	10	110
Plumbing	607	644	685	713	747	810	860	910	727	919	745	635	9,002
<b>Total</b>	<b>2,903</b>	<b>3,272</b>	<b>3,269</b>	<b>3,369</b>	<b>3,601</b>	<b>3,710</b>	<b>3,869</b>	<b>4,433</b>	<b>3,502</b>	<b>4,254</b>	<b>3,614</b>	<b>3,093</b>	<b>42,889</b>
<b>Financial</b>													
Fees	\$ 283,067	\$ 368,621	\$ 349,828	\$ 437,512	\$ 445,615	\$ 847,354	\$ 409,789	\$ 465,990	\$ 424,098	\$ 556,112	\$ 351,483	\$ 339,790	\$ 5,279,259
Valuation	19,814,277	14,083,423	26,916,589	41,871,879	43,444,418	30,630,140	68,683,128	31,365,026	24,209,377	44,073,062	24,571,158	19,121,091	388,783,568



**Washington County Building Services  
Activity  
Calendar Year 2011**

	January 2011	February 2011	March 2011	April 2011	May 2011	June 2011	July 2011	August 2011	September 2011	October 2011	November 2011	December 2011	Year to Date Total
<b>Plan Review</b>													
Submitted	171	150	159	163	194	185	217	253	257	166	183	190	2,288
Completed	347	280	320	365	317	407	373	393	356	296	255	292	4,001
Pending Residential	26	19	27	25	41	50	23	22	41	16	40	32	362
Pending Commercial	39	11	20	12	26	19	23	13	14	13	17	11	218
Grading	10	8	6	10	8	15	10	12	13	8	7	11	118
<b>Plan Review Average</b>													
Residential	2 Weeks	2 Weeks	2 Weeks	2 Weeks	2 Weeks	2 Weeks	2 Weeks	2 Weeks	2 Weeks	2 Weeks	2 Weeks	2 Weeks	2
Commercial	3.5 Weeks	2.5 Weeks	3.5 Weeks	2.5 Weeks	2.5 Weeks	2.5 Weeks	3 Weeks	2.5 Weeks	2.5 Weeks	2 Weeks	2.5 Weeks	2.5 Weeks	2.7
<b>Building Assistance</b>													
Counter	565	538	735	670	646	782	699	762	693	605	527	516	7,738
Files Finaled	25	51	23	9	10	30	14	11	21	12	14	15	235
<b>Permits Issued</b>													
Single Family Res - New	37	36	36	36	28	33	42	44	34	35	33	30	424
Single Family Res - Add/Remodel	49	29	54	45	52	66	62	84	54	62	35	37	629
Multi Family - Bldgs/Units	0	0	0	0	2 / 20	0	1 / 12	0	0	0	0	0	3 / 32
Commercial/Industrial	1	0	0	0	4	4	10	1	1	2	1	0	24
Commercial - Add/Remodel	37	46	32	49	50	35	36	67	70	43	30	43	538
Manufactured Homes	0	1	2	2	3	2	0	4	0	0	0	0	14
Miscellaneous	30	30	60	56	35	70	49	57	52	48	36	38	561
Electrical	371	312	346	323	339	351	352	397	334	283	325	283	4,016
Plumbing	106	77	134	120	117	141	116	123	105	61	102	71	1,273
Mechanical	229	169	177	179	166	230	162	185	184	220	251	247	2,399
<b>Total</b>	<b>860</b>	<b>700</b>	<b>841</b>	<b>810</b>	<b>796</b>	<b>932</b>	<b>830</b>	<b>962</b>	<b>834</b>	<b>754</b>	<b>813</b>	<b>749</b>	<b>9,878</b>
<b>Inspections</b>													
Structural / Mechanical	2,125	1,855	2,102	1,730	1,798	1,840	2,054	2,042	2,040	1,748	1,539	1,653	22,526
Electrical	977	801	976	862	1,010	1,067	929	920	1,070	908	869	925	11,314
Electrical Master Permits	17	3	4	4	1	6	11	5	4	19	2	6	82
Plumbing	679	707	776	712	747	829	763	773	795	681	597	587	8,646
<b>Total</b>	<b>3,798</b>	<b>3,366</b>	<b>3,858</b>	<b>3,308</b>	<b>3,556</b>	<b>3,742</b>	<b>3,757</b>	<b>3,740</b>	<b>3,909</b>	<b>3,356</b>	<b>3,007</b>	<b>3,171</b>	<b>42,568</b>
<b>Financial</b>													
Fees	\$ 244,904	\$ 244,863	\$ 262,413	\$ 280,949	\$ 298,448	\$ 334,487	\$ 299,469	\$ 348,031	\$ 280,564	\$ 288,952	\$ 254,550	\$ 317,031	\$ 3,454,661
Valuation	16,300,617	12,036,401	20,659,954	16,475,357	16,733,964	25,342,204	23,590,991	27,992,327	14,936,614	23,961,318	16,008,897	13,454,698	227,493,342



**Washington County Building Services  
Activity  
Calendar Year 2010**

	January 2010	February 2010	March 2010	April 2010	May 2010	June 2010	July 2010	August 2010	September 2010	October 2010	November 2010	December 2010	Year to Date Total
<b>Plan Review</b>													
Submitted	116	154	209	101	203	201	227	254	192	157	123	103	2,040
Completed	176	236	280	277	358	356	390	337	348	338	235	219	3,550
Pending Residential	21	28	37	43	45	24	22	43	30	32	6	10	341
Pending Commercial	13	26	17	26	27	24	32	20	13	11	7	14	230
Grading	2	12	10	11	6	14	10	13	14	9	6	6	113
<b>Review Average</b>													
Residential	1 Week	1.5 Weeks	3.5 Weeks	2.5 Weeks	2 Weeks	2 Weeks	3 Weeks	3 Weeks	2 Weeks	3.5 Weeks	2.5 Weeks	3 Weeks	2.5
Commercial	2 Weeks	3 Weeks	3 Weeks	3 Weeks	3.5 Weeks	3 Weeks	3.5 Weeks	3.5 Weeks	3 Weeks	2.5 Weeks	2 Weeks	2 Weeks	2.8
<b>Building Assistance</b>													
Counter	551	578	698	696	733	732	656	757	678	680	562	481	7,802
Files Finaled	123	111	124	93	95	98	113	90	82	45	47	36	1,057
<b>Permits Issued</b>													
Single Family Res - New	35	44	52	65	49	50	56	49	50	42	23	41	556
Single Family Res - Add/Remodel	23	48	37	57	65	60	53	49	43	45	36	38	554
Multi Family - Bldgs/Units	0	0	0	0	0	0	0	0	0	0	0	0	-
Commercial/Industrial	2	1	2	3	1	2	2	0	2	8	3	0	26
Commercial - Add/Remodel	21	19	29	26	32	59	78	81	46	48	35	23	497
Manufactured Homes	3	3	3	2	1	1	6	3	1	4	0	1	28
Miscellaneous	18	40	48	42	61	49	48	44	44	62	31	27	514
Electrical	317	321	395	368	364	409	456	431	386	376	372	370	4,565
Plumbing	94	85	105	106	119	134	92	127	112	133	120	103	1,330
Mechanical	197	173	196	213	238	249	289	219	228	298	347	349	2,996
<b>Total</b>	<b>710</b>	<b>734</b>	<b>867</b>	<b>882</b>	<b>930</b>	<b>1,013</b>	<b>1,080</b>	<b>1,003</b>	<b>912</b>	<b>1,016</b>	<b>967</b>	<b>952</b>	<b>11,066</b>
<b>Inspections</b>													
Structural / Mechanical	1,813	1,753	2,250	2,148	2,256	2,451	2,246	2,363	2,321	2,301	2,023	2,294	26,219
Electrical	823	870	1,020	950	910	1,051	1,043	1,085	1,071	971	938	973	11,705
Electrical Master Permits	7	5	8	5	7	11	8	4	5	12	10	23	105
Plumbing	713	778	882	861	758	902	847	1,024	861	801	740	806	9,973
<b>Total</b>	<b>3,356</b>	<b>3,406</b>	<b>4,160</b>	<b>3,964</b>	<b>3,931</b>	<b>4,415</b>	<b>4,144</b>	<b>4,476</b>	<b>4,258</b>	<b>4,085</b>	<b>3,711</b>	<b>4,096</b>	<b>48,002</b>
<b>Financial</b>													
Fees	\$ 201,422	\$ 248,968	\$ 337,419	\$ 331,241	\$ 301,722	\$ 372,180	\$ 307,215	\$ 359,906	\$ 277,703	\$ 322,461	\$ 207,580	\$ 257,798	3,525,615
Valuation	11,805,207	14,466,511	26,988,948	21,719,093	18,091,533	19,440,253	18,888,948	24,791,930	20,356,883	10,431,430	10,549,045	16,090,467	213,620,248

**Washington County Building Services Activity**  
**Calendar Year 2009**

	<b>Building</b>	<b>Activity</b>		
<b>2009</b>	<b>Jan-09</b>	<b>Feb-09</b>	<b>Mar-09</b>	<b>Apr-09</b>
	<b>Plan</b>	<b>Review</b>		
<b>Submitted</b>	130	120	130	144
<b>Completed</b>	243	227	234	225
<b>Pending/Residential</b>	29	48	61	69
<b>Pending/Commercial</b>	34	32	40	35
<b>Grading</b>	8	7	6	8
	<b>Plan Review</b>	<b>Average Days</b>		
<b>Residential</b>	1 Week	3 Weeks	4 Weeks	2 Weeks
<b>Commercial</b>	4 Weeks	4 Weeks	4 1/2 Weeks	4 Weeks
	<b>Building</b>	<b>Assistance</b>		
<b>Counter</b>	613	691	739	678
<b>Files Finaled</b>	631	415	355	296
	<b>Permit</b>	<b>Issuance</b>		
<b>Single Family Res - New</b>	28	18	33	32
<b>Single Family Res - Add/Remodel</b>	36	28	54	38
<b>Multi Family - Bldgs/Units</b>	0	0	0	0
<b>Commercial/Industrial</b>	1	0	3	1
<b>Commercial - Add/Remodel</b>	23	38	36	24
<b>Manufactured Homes</b>	4	5	0	3
<b>Miscellaneous</b>	27	34	34	40
<b>Electrical</b>	306	294	390	334
<b>Plumbing</b>	74	66	84	110
<b>Mechanical</b>	163	170	211	234
<b>Grand Total</b>	662	653	845	816
	<b>Inspections</b>			
<b>Building</b>	1,997	1,883	2,119	2,015
<b>Electrical/Master Permits</b>	1,247/14	999/9	1,211/5	1,067/10
<b>Plumbing</b>	700	674	731	755
<b>Total</b>	3,958	3,565	4,066	3,847
	<b>Financial</b>			
<b>Fees</b>	201,624	199,103	339,445	295,172
<b>Valuation</b>	13,303,507	12,014,149	18,563,470	9,630,494



	<b>Building</b>	<b>Activity</b>		
<b>2009</b>	<b>May-09</b>	<b>Jun-09</b>	<b>Jul-09</b>	<b>Aug-09</b>
	<b>Plan</b>	<b>Review</b>		
<b>Submitted</b>	172	326	203	227
<b>Completed</b>	220	273	319	308
<b>Pending/Residential</b>	11	99	53	41
<b>Pending/Commercial</b>	24	45	20	27
<b>Grading</b>	9	14	7	5
	<b>Plan Review</b>	<b>Average Days</b>		
<b>Residential</b>	3 Weeks	3 Weeks	4 Weeks	3 Weeks
<b>Commercial</b>	4 Weeks	4 1/2 Weeks	4 Weeks	4 Weeks
	<b>Building</b>	<b>Assistance</b>		
<b>Counter</b>	716	899	823	852
<b>Files Finaled</b>	197	205	204	155
	<b>Permit</b>	<b>Issuance</b>		
<b>Single Family Res - New</b>	29	46	35	42
<b>Single Family Res - Add/Remodel</b>	58	66	54	58
<b>Multi Family - Bldgs/Units</b>	0	0	0	0
<b>Commercial/Industrial</b>	3	0	1	2
<b>Commercial - Add/Remodel</b>	23	26	68	53
<b>Manufactured Homes</b>	2	2	2	2
<b>Miscellaneous</b>	48	44	46	60
<b>Electrical</b>	440	474	368	467
<b>Plumbing</b>	101	94	104	120
<b>Mechanical</b>	201	229	243	264
<b>Grand Total</b>	905	981	921	1,068
	<b>Inspections</b>			
<b>Building</b>	1,719	2,158	2,335	2,372
<b>Electrical/Master Permits</b>	1,044/7	1,176/8	897/18	1,107/12
<b>Plumbing</b>	640	785	821	760
<b>Total</b>	3,410	4,127	4,071	4,251
	<b>Financial</b>			
<b>Fees</b>	236,662	326,859	237,687	323,506
<b>Valuation</b>	15,640,898	33,827,460	17,577,485	19,971,992

	<b>Building</b>	<b>Activity</b>		
<b>2009</b>	<b>Sep-09</b>	<b>Oct-09</b>	<b>Nov-09</b>	<b>Dec-09</b>
	<b>Plan</b>	<b>Review</b>		
<b>Submitted</b>	159	162	127	113
<b>Completed</b>	268	252	188	183
<b>Pending/Residential</b>	21	32	23	20
<b>Pending/Commercial</b>	39	22	18	25
<b>Grading</b>	13	10	3	10
	<b>Plan Review</b>	<b>Average Days</b>		
<b>Residential</b>	3 Weeks	3 1/2 Weeks	1 1/2 Weeks	1 Week
<b>Commercial</b>	4 Weeks	3 1/2 Weeks	3 Weeks	3 Weeks
	<b>Building</b>	<b>Assistance</b>		
<b>Counter</b>	781	671	577	520
<b>Files Finaled</b>	188	142	103	119
	<b>Permit</b>	<b>Issuance</b>		
<b>Single Family Res - New</b>	47	53	30	37
<b>Single Family Res - Add/Remodel</b>	60	45	36	25
<b>Multi Family - Bldgs/Units</b>	0	0	0	0
<b>Commercial/Industrial</b>	0	0	0	1
<b>Commercial - Add/Remodel</b>	16	31	21	14
<b>Manufactured Homes</b>	2	3	3	1
<b>Miscellaneous</b>	51	40	24	37
<b>Electrical</b>	334	373	401	298
<b>Plumbing</b>	119	108	97	82
<b>Mechanical</b>	241	271	242	280
<b>Grand Total</b>	870	924	854	775
	<b>Inspections</b>			
<b>Building</b>	2,390	2,329	1,888	1,975
<b>Electrical/Master Permits</b>	950/11	1,088/10	921/6	910/8
<b>Plumbing</b>	868	895	703	640
<b>Total</b>	4,219	4,322	3,518	3,533
	<b>Financial</b>			
<b>Fees</b>	244,594	264,959	250,571	220,592
<b>Valuation</b>	14,710,933	14,690,389	20,636,116	21,353,629

<b>Building</b>	<b>Activity</b>
<b>2009</b>	<b>Total Year to Date</b>
<b>Plan</b>	<b>Review</b>
Submitted	2,013
Completed	2,940
Pending/Residential	507
Pending/Commercial	361
Grading	100
<b>Plan Review</b>	<b>Average Days</b>
Residential	
Commercial	
<b>Building</b>	<b>Assistance</b>
Counter	8,560
Files Finaled	3,010
<b>Permit</b>	<b>Issuance</b>
Single Family Res - New	430
Single Family Res - Add/Remodel	558
Multi Family - Bldgs/Units	0
Commercial/Industrial	12
Commercial - Add/Remodel	373
Manufactured Homes	29
Miscellaneous	485
Electrical	4,479
Plumbing	1,159
Mechanical	2,749
Grand Total	10,274
<b>Inspections</b>	
Building	25,180
Electrical/Master Permits	12,617/118
Plumbing	8,972
Total	46,887
<b>Financial</b>	
Fees	3,140,774
Valuation	211,920,522

**Washington County Building Services Activity**  
**Calendar Year 2008**

	<b>Building</b>	<b>Activity</b>		
<b>2008</b>	<b>Jan-08</b>	<b>Feb-08</b>	<b>Mar-08</b>	<b>Apr-08</b>
	<b>Plan</b>	<b>Review</b>		
<b>Submitted</b>	168	203	335	230
<b>Completed</b>	259	230	327	370
<b>Pending/Residential</b>	76	58	94	75
<b>Pending/Commercial</b>	30	56	88	66
<b>Grading</b>	11	12	17	15
	<b>Plan Review</b>	<b>Average Days</b>		
<b>Residential</b>	3 1/2 Weeks	2 1/2 Weeks	2 Weeks	4 1/2 Weeks
<b>Commercial</b>	4 1/2 Weeks	5 Weeks	5 1/2 Weeks	5 1/2 Weeks
	<b>Building</b>	<b>Assistance</b>		
<b>Counter</b>	820	825	929	1,065
<b>Files Finaled</b>	1,071	799	755	862
	<b>Permit</b>	<b>Issuance</b>		
<b>Single Family Res - New</b>	56	47	48	67
<b>Single Family Res - Add/Remodel</b>	51	47	58	54
<b>Multi Family - Bldgs/Units</b>	0	0	0	2/14
<b>Commercial/Industrial</b>	0	0	1	0
<b>Commercial - Add/Remodel</b>	22	26	84	60
<b>Manufactured Homes</b>	1	1	1	5
<b>Miscellaneous</b>	45	43	51	45
<b>Electrical</b>	422	420	464	549
<b>Plumbing</b>	105	106	97	201
<b>Mechanical</b>	206	170	215	223
<b>Grand Total</b>	908	860	1,019	1,220
	<b>Inspections</b>			
<b>Building</b>	3,078	2,610	2,563	3,078
<b>Electrical/Master Permits</b>	1,372/12	1,234/6	1,332/6	1,519/11
<b>Plumbing</b>	1,007	967	900	1,287
<b>Total</b>	5,469	4,817	4,801	5,895
	<b>Financial</b>			
<b>Fees</b>	363,184	335,378	361,197	544,054
<b>Valuation</b>	14,573,209	17,421,447	49,281,804	57,595,996

	<b>Building</b>	<b>Activity</b>		
<b>2008</b>	<b>May-08</b>	<b>Jun-08</b>	<b>Jul-08</b>	<b>Aug-08</b>
	<b>Plan</b>	<b>Review</b>		
<b>Submitted</b>	363	311	271	235
<b>Completed</b>	447	380	404	365
<b>Pending/Residential</b>	43	48	28	26
<b>Pending/Commercial</b>	51	50	42	42
<b>Grading</b>	13	16	16	13
	<b>Plan Review</b>	<b>Average Days</b>		
<b>Residential</b>	3 1/3 Weeks	2 1/2 Weeks	1 1/3 Weeks	2 Weeks
<b>Commercial</b>	5 1/2 Weeks	5 Weeks	5 Weeks	5 Weeks
	<b>Building</b>	<b>Assistance</b>		
<b>Counter</b>	941	1,008	1,053	932
<b>Files Finaled</b>	888	992	847	844
	<b>Permit</b>	<b>Issuance</b>		
<b>Single Family Res - New</b>	77	49	55	48
<b>Single Family Res - Add/Remodel</b>	68	71	82	71
<b>Multi Family - Bldgs/Units</b>	1/13	0	0	0
<b>Commercial/Industrial</b>	0	1	0	2
<b>Commercial - Add/Remodel</b>	94	43	92	55
<b>Manufactured Homes</b>	0	1	0	1
<b>Miscellaneous</b>	58	53	61	50
<b>Electrical</b>	546	545	520	450
<b>Plumbing</b>	132	108	126	115
<b>Mechanical</b>	237	232	260	177
<b>Grand Total</b>	1,226	1,103	1,196	969
	<b>Inspections</b>			
<b>Building</b>	2,910	3,065	3,283	3,002
<b>Electrical/Master Permits</b>	1,433/10	1,553/12	1,587/8	1,487/13
<b>Plumbing</b>	1,277	1,061	1,100	1,004
<b>Total</b>	5,630	5,691	5,978	5,506
	<b>Financial</b>			
<b>Fees</b>	476,071	344,746	416,038	414,739
<b>Valuation</b>	49,523,568	35,978,625	25,276,449	25,974,170

	<b>Building</b>	<b>Activity</b>		
<b>2008</b>	<b>Sep-08</b>	<b>Oct-08</b>	<b>Nov-08</b>	<b>Dec-08</b>
	<b>Plan</b>	<b>Review</b>		
<b>Submitted</b>	186	163	120	109
<b>Completed</b>	340	317	192	209
<b>Pending/Residential</b>	27	4	6	23
<b>Pending/Commercial</b>	38	31	38	27
<b>Grading</b>	9	11	4	7
	<b>Plan Review</b>	<b>Average Days</b>		
<b>Residential</b>	2 Weeks	0 Weeks	1 1/2 Weeks	3 Weeks
<b>Commercial</b>	4 Weeks	4 Weeks	4 Weeks	4 Weeks
	<b>Building</b>	<b>Assistance</b>		
<b>Counter</b>	934	788	595	460
<b>Files Finaled</b>	742	973	786	583
	<b>Permit</b>	<b>Issuance</b>		
<b>Single Family Res - New</b>	46	43	23	14
<b>Single Family Res - Add/Remodel</b>	57	37	18	25
<b>Multi Family - Bldgs/Units</b>	0	0	0	0
<b>Commercial/Industrial</b>	0	4	1	0
<b>Commercial - Add/Remodel</b>	63	42	38	39
<b>Manufactured Homes</b>	1	3	2	2
<b>Miscellaneous</b>	69	62	30	21
<b>Electrical</b>	488	456	337	343
<b>Plumbing</b>	119	147	80	63
<b>Mechanical</b>	260	270	195	172
<b>Grand Total</b>	1,103	1,064	724	679
	<b>Inspections</b>			
<b>Building</b>	2,718	2,573	1,946	1,389
<b>Electrical/Master Permits</b>	1,382/20	1,497/11	1,134/9	903/10
<b>Plumbing</b>	1,121	1,057	654	555
<b>Total</b>	5,241	5,138	3,743	2,857
	<b>Financial</b>			
<b>Fees</b>	385,427	316,025	253,389	173,308
<b>Valuation</b>	10,605,753	13,533,493	9,618,654	12,718,472

<b>Building</b>	<b>Activity</b>
<b>2008</b>	<b>Total Year to Date</b>
<b>Plan</b>	<b>Review</b>
Submitted	2,694
Completed	3,840
Pending/Residential	508
Pending/Commercial	559
Grading	144
<b>Plan Review</b>	<b>Average Days</b>
Residential	
Commercial	
<b>Building</b>	<b>Assistance</b>
Counter	10,350
Files Finaled	10,142
<b>Permit</b>	<b>Issuance</b>
Single Family Res - New	573
Single Family Res - Add/Remodel	639
Multi Family - Bldgs/Units	3/27
Commercial/Industrial	9
Commercial - Add/Remodel	658
Manufactured Homes	18
Miscellaneous	588
Electrical	5,540
Plumbing	1,399
Mechanical	2,617
Grand Total	12,071
<b>Inspection</b>	
Building	32,215
Electrical/Master Permits	16,433/128
Plumbing	11,990
Total	60,766
<b>Financial</b>	
Fees	4,383,556
Valuation	322,101,640

**Washington County Building Services Activity**  
**Calendar Year 2007**

	<b>Building</b>	<b>Activity</b>		
<b>2007</b>	<b>Jan-07</b>	<b>Feb-07</b>	<b>Mar-07</b>	<b>Apr-07</b>
	<b>Plan</b>	<b>Review</b>		
<b>Submitted</b>	241	239	306	310
<b>Completed</b>	348	301	302	398
<b>Pending/Residential</b>	64	70	111	75
<b>Pending/Commercial</b>	31	38	39	32
<b>Grading</b>	15	20	28	20
	<b>Plan Review</b>	<b>Average Days</b>		
<b>Residential</b>	5 Weeks	3 1/2 Weeks	4 Weeks	4 Weeks
<b>Commercial</b>	5 Weeks	5 Weeks	5 Weeks	5 Weeks
	<b>Building</b>	<b>Assistance</b>		
<b>Phones</b>	4,058	3,810	3,895	3,842
<b>Counter</b>	856	899	1,065	1,136
<b>Files Finaled</b>	937	925	1,000	876
	<b>Permit</b>	<b>Issuance</b>		
<b>Single Family Res - New</b>	51	56	69	142
<b>Single Family Res - Add/Remodel</b>	56	45	60	69
<b>Multi Family - Bldgs/Units</b>	0	0	4/100	0
<b>Commercial/Industrial</b>	0	16	1	2
<b>Commercial - Add/Remodel</b>	20	27	31	26
<b>Manufactured Homes</b>	4	9	1	4
<b>Miscellaneous</b>	58	72	60	98
<b>Electrical</b>	462	484	509	619
<b>Plumbing</b>	105	122	116	134
<b>Mechanical</b>	226	203	245	241
<b>Grand Total</b>	982	1,034	1,196	1,335
	<b>Inspections</b>			
<b>Building</b>	2,768	2,909	2,988	2,982
<b>Electrical/Master Permits</b>	1,513/9	1,396/9	1,357/14	1,446/14
<b>Plumbing</b>	957	971	998	1,200
<b>Total</b>	5,247	5,285	5,357	5,642
	<b>Financial</b>			
<b>Fees</b>	412,733	393,622	506,169	602,942
<b>Valuation</b>	31,662,799	35,064,181	54,436,457	40,350,374



	<b>Building</b>	<b>Activity</b>		
<b>2007</b>	<b>May-07</b>	<b>Jun-07</b>	<b>Jul-07</b>	<b>Aug-07</b>
	<b>Plan</b>	<b>Review</b>		
<b>Submitted</b>	372	391	322	305
<b>Completed</b>	471	449	412	442
<b>Pending/Residential</b>	109	108	129	91
<b>Pending/Commercial</b>	23	20	32	35
<b>Grading</b>	22	25	31	26
	<b>Plan Review</b>	<b>Average Days</b>		
<b>Residential</b>	3 1/2 Weeks	4 1/2 Weeks	4 Weeks	3 Weeks
<b>Commercial</b>	4 1/2 Weeks	4 Weeks	4 1/2 Weeks	4 1/2 Weeks
	<b>Building</b>	<b>Assistance</b>		
<b>Phones</b>	4,444	4,288	No longer tracking	No longer tracking
<b>Counter</b>	1,201	1,245	1,230	1,361
<b>Files Finaled</b>	973	1,042	909	1,198
	<b>Permit</b>	<b>Issuance</b>		
<b>Single Family Res - New</b>	83	123	96	112
<b>Single Family Res - Add/Remodel</b>	86	65	78	82
<b>Multi Family - Bldgs/Units</b>	0	0	0	1/184
<b>Commercial/Industrial</b>	2	2	1	2
<b>Commercial - Add/Remodel</b>	59	100	41	51
<b>Manufactured Homes</b>	3	4	4	6
<b>Miscellaneous</b>	72	89	90	88
<b>Electrical</b>	650	672	634	621
<b>Plumbing</b>	159	144	137	177
<b>Mechanical</b>	302	317	257	250
<b>Grand Total</b>	1,416	1,516	1,338	1,574
	<b>Inspections</b>			
<b>Building</b>	3,477	3,568	3,584	4,258
<b>Electrical/Master Permits</b>	1,730/14	1,628/13	1,625/10	2,009/10
<b>Plumbing</b>	1,327	1,339	1,076	1,438
<b>Total</b>	6,548	6,548	6,295	7,715
	<b>Financial</b>			
<b>Fees</b>	688,227	638,799	685,699	666,826
<b>Valuation</b>	56,182,187	56,525,295	38,221,729	31,630,198

	<b>Building</b>	<b>Activity</b>	
<b>2007</b>	<b>Sep-07</b>	<b>Oct-07</b>	<b>Nov-07</b>
	<b>Plan</b>	<b>Review</b>	
<b>Submitted</b>	292	257	184
<b>Completed</b>	353	421	249
<b>Pending/Residential</b>	95	23	27
<b>Pending/Commercial</b>	30	73	79
<b>Grading</b>	17	13	16
	<b>Plan Review</b>	<b>Average Days</b>	
<b>Residential</b>	7 Weeks	7 Weeks	4 1/2 Weeks
<b>Commercial</b>	4 Weeks	4 Weeks	4 Weeks
	<b>Building</b>	<b>Assistance</b>	
<b>Phones</b>	No longer tracking	No longer tracking	No longer tracking
<b>Counter</b>	1,058	1,104	871
<b>Files Finaled</b>	894	1,077	1,068
	<b>Permit</b>	<b>Issuance</b>	
<b>Single Family Res - New</b>	47	64	40
<b>Single Family Res - Add/Remodel</b>	54	49	54
<b>Multi Family - Bldgs/Units</b>	0	0	0
<b>Commercial/Industrial</b>	0	1	2
<b>Commercial - Add/Remodel</b>	75	82	27
<b>Manufactured Homes</b>	6	4	8
<b>Miscellaneous</b>	86	95	62
<b>Electrical</b>	455	533	395
<b>Plumbing</b>	111	135	121
<b>Mechanical</b>	186	316	250
<b>Grand Total</b>	1,020	1,279	959
	<b>Inspections</b>		
<b>Building</b>	3,579	3,973	3,339
<b>Electrical/Master Permits</b>	1,514/11	1,809/9	1,542/9
<b>Plumbing</b>	1,350	1,338	1,193
<b>Total</b>	6,454	7,129	6,083
	<b>Financial</b>		
<b>Fees</b>	334,453	494,920	400,409
<b>Valuation</b>	23,819,652	26,274,522	44,775,479

	<b>Building</b>	<b>Activity</b>
<b>2007</b>	<b>Dec-07</b>	<b>Total Year to Date</b>
	<b>Plan</b>	<b>Review</b>
<b>Submitted</b>	222	3,441
<b>Completed</b>	230	4,376
<b>Pending/Residential</b>	249	1,151
<b>Pending/Commercial</b>	33	465
<b>Grading</b>	4	237
	<b>Plan Review</b>	<b>Average Days</b>
<b>Residential</b>	3 3/4 Weeks	
<b>Commercial</b>	4 Weeks	
	<b>Building</b>	<b>Assistance</b>
<b>Phones</b>	No longer tracking	24,337 thru June
<b>Counter</b>	673	12,699
<b>Files Finaled</b>	952	11,851
	<b>Permit</b>	<b>Issuance</b>
<b>Single Family Res - New</b>	30	913
<b>Single Family Res - Add/Remodel</b>	28	726
<b>Multi Family - Bldgs/Units</b>	0	5/284
<b>Commercial/Industrial</b>	1	30
<b>Commercial - Add/Remodel</b>	37	576
<b>Manufactured Homes</b>	3	56
<b>Miscellaneous</b>	37	907
<b>Electrical</b>	328	6,362
<b>Plumbing</b>	103	1,564
<b>Mechanical</b>	244	3,037
<b>Grand Total</b>	811	14,460
	<b>Inspections</b>	
<b>Building</b>	2,612	40,037
<b>Electrical/Master Permits</b>	1,255/9	18,824/131
<b>Plumbing</b>	840	14,027
<b>Total</b>	4,716	73,019
	<b>Financial</b>	
<b>Fees</b>	246,843	6,371,642
<b>Valuation</b>	56,610,470	495,553,343

**Washington County Building Services Activity**  
**Calendar Year 2006**

	<b>Building</b>	<b>Activity</b>		
2006	<b>Jan-06</b>	<b>Feb-06</b>	<b>Mar-06</b>	<b>Apr-06</b>
	<b>Plan</b>	<b>Review</b>		
<b>Submitted</b>	250	232	254	333
<b>Completed</b>	349	370	400	457
<b>Pending/Residential</b>	70	64	49	61
<b>Pending/Commercial</b>	32	23	27	32
<b>Grading</b>	12	16	12	22
	<b>Plan Review</b>	<b>Average Days</b>		
<b>Residential</b>	10 1/2 Weeks	10 Weeks	5 1/2 Weeks	4 1/2 Weeks
<b>Commercial</b>	6 Weeks	6 Weeks	6 Weeks	5 Weeks
	<b>Building</b>	<b>Assistance</b>		
<b>Phones</b>	3,863	3,911	4,467	4,393
<b>Counter</b>	863	884	1,188	1,022
<b>Files Finaled</b>	996	779	995	887
	<b>Permit</b>	<b>Issuance</b>		
<b>Single Family Res - New</b>	65	84	70	79
<b>Single Family Res - Add/Remodel</b>	46	47	61	60
<b>Multi Family - Bldgs/Units</b>	15/160	8/42	4/55	5/44
<b>Commercial/Industrial</b>	2	1	0	1
<b>Commercial - Add/Remodel</b>	10	24	23	29
<b>Manufactured Homes</b>	7	3	9	11
<b>Miscellaneous</b>	48	64	70	78
<b>Electrical</b>	531	486	619	485
<b>Plumbing</b>	94	101	124	120
<b>Mechanical</b>	184	212	190	187
<b>Grand Total</b>	1,162	1,072	1,225	1,099
	<b>Inspections</b>			
<b>Building</b>	3,667	3,545	3,357	2,958
<b>Electrical/In-Plant</b>	1,568/13	1,191/12	1,611/13	1,388/14
<b>Plumbing</b>	1,382	1,254	1,346	1,109
<b>Total</b>	6,630	6,002	6,327	5,469
	<b>Financial</b>			
<b>Fees</b>	469,648	500,965	525,193	598,902
<b>Valuation</b>	28,241,525	23,805,600	28,746,434	41,769,210

	<b>Building</b>	<b>Activity</b>			
2006	<b>May-06</b>	<b>Jun-06</b>	<b>Jul-06</b>	<b>Aug-06</b>	<b>Sep-06</b>
	<b>Plan</b>	<b>Review</b>			
<b>Submitted</b>	327	369	288	403	305
<b>Completed</b>	445	555	416	562	377
<b>Pending/Residential</b>	72	43	54	79	37
<b>Pending/Commercial</b>	28	29	24	39	30
<b>Grading</b>	30	21	17	19	11
	<b>Plan Review</b>	<b>Average Days</b>			
<b>Residential</b>	7 1/2 Weeks	4 1/2 Weeks	6 Weeks	7 Weeks	6 Weeks
<b>Commercial</b>	5 Weeks	5 Weeks	5 Weeks	6 Weeks	6 Weeks
	<b>Building</b>	<b>Assistance</b>			
<b>Phones</b>	5,073	4,893	4,759	5,326	4,734
<b>Counter</b>	1,131	1,140	1,062	1,216	1,037
<b>Files Finaled</b>	852	1,023	929	1,020	874
	<b>Permit</b>	<b>Issuance</b>			
<b>Single Family Res - New</b>	89	86	77	97	59
<b>Single Family Res - Add/Remodel</b>	66	153	103	86	77
<b>Multi Family - Bldgs/Units</b>	6/26	2/96	3/13	0	0
<b>Commercial/Industrial</b>	1	1	1	6	5
<b>Commercial - Add/Remodel</b>	31	20	25	43	27
<b>Manufactured Homes</b>	13	8	10	12	11
<b>Miscellaneous</b>	94	87	99	115	77
<b>Electrical</b>	557	588	580	593	501
<b>Plumbing</b>	149	129	120	145	117
<b>Mechanical</b>	224	281	294	252	246
<b>Grand Total</b>	1,256	1,451	1,325	1,349	1,120
	<b>Inspections</b>				
<b>Building</b>	3,253	3,166	2,858	3,382	2,943
<b>Electrical/In-Plant</b>	1,496/15	1,465/9	1,263/8	1,501/9	1,330/9
<b>Plumbing</b>	1,355	1,141	1,208	1,369	1,229
<b>Total</b>	6,119	5,781	5,337	6,261	5,511
	<b>Financial</b>				
<b>Fees</b>	555,953	668,811	506,518	593,030	396,826
<b>Valuation</b>	31,080,024	41,470,786	28,127,703	33,496,011	28,488,753

	<b>Building</b>	<b>Activity</b>		
2006	<b>Oct-06</b>	<b>Nov-06</b>	<b>Dec-06</b>	<b>Total Year to Date</b>
	<b>Plan</b>	<b>Review</b>		
<b>Submitted</b>	273	472	175	3,681
<b>Completed</b>	447	356	274	5,008
<b>Pending/Residential</b>	53	46	29	657
<b>Pending/Commercial</b>	55	43	32	394
<b>Grading</b>	16	15	13	204
	<b>Plan Review</b>	<b>Average Days</b>		
<b>Residential</b>	6 Weeks	7 Weeks	3 1/2 Weeks	
<b>Commercial</b>	8 Weeks	6 Weeks	5 Weeks	
	<b>Building</b>	<b>Assistance</b>		
<b>Phones</b>	4,278	4,147	3,613	53,457
<b>Counter</b>	1,032	795	724	12,094
<b>Files Finaled</b>	982	840	1,011	11,188
	<b>Permit</b>	<b>Issuance</b>		
<b>Single Family Res - New</b>	59	54	60	879
<b>Single Family Res - Add/Remodel</b>	65	53	47	864
<b>Multi Family - Bldgs/Units</b>	0	0	0	43/436
<b>Commercial/Industrial</b>	0	2	2	22
<b>Commercial - Add/Remodel</b>	52	25	13	322
<b>Manufactured Homes</b>	5	5	1	95
<b>Miscellaneous</b>	82	47	59	920
<b>Electrical</b>	516	443	461	6,360
<b>Plumbing</b>	146	94	95	1,434
<b>Mechanical</b>	273	264	212	2,819
<b>Grand Total</b>	1,198	987	950	14,194
	<b>Inspections</b>			
<b>Building</b>	3,310	2,498	2,542	37,479
<b>Electrical/In-Plant</b>	1,442/11	1,248/7	1,324/4	16,827/124
<b>Plumbing</b>	1,214	887	980	14,474
<b>Total</b>	5,977	4,640	4,850	68,904
	<b>Financial</b>			
<b>Fees</b>	425,353	446,924	354,145	6,047,268
<b>Valuation</b>	27,563,700	41,727,087	20,269,146	374,785,979

**Washington County Building Services Activity**  
**Calendar Year 2005**

	<b>Building</b>	<b>Activity</b>		
<b>2005</b>	<b>Jan-05</b>	<b>Feb-05</b>	<b>Mar-05</b>	<b>Apr-05</b>
	<b>Plan</b>	<b>Review</b>		
<b>Submitted</b>	255	341	400	345
<b>Completed</b>	435	405	533	523
<b>Pending/Residential</b>	83	262	101	91
<b>Pending/Commercial</b>	32	31	31	17
<b>Grading</b>	15	26	15	14
	<b>Plan Review</b>	<b>Average Days</b>		
<b>Residential</b>	3 Weeks	3 Weeks	2 Weeks	2 1/2 Weeks
<b>Commercial</b>	5 Weeks	4 1/2 Weeks	4 1/2 Weeks	4 1/2 Weeks
	<b>Building</b>	<b>Assistance</b>		
<b>Phones</b>	3,743	3,834	4,572	3,846
<b>Counter</b>	814	843	1,095	931
<b>Files Finaled</b>	916	791	1,096	1,030
	<b>Permit</b>	<b>Issuance</b>		
<b>Single Family Res - New</b>	92	91	111	116
<b>Single Family Res - Add/Remodel</b>	49	38	62	64
<b>Multi Family - Bldgs/Units</b>	0	6/28	5/55	3/48
<b>Commercial/Industrial</b>	0	2	4	2
<b>Commercial - Add/Remodel</b>	26	22	49	20
<b>Manufactured Homes</b>	6	0	1	6
<b>Miscellaneous</b>	56	68	77	58
<b>Electrical</b>	530	549	726	736
<b>Plumbing</b>	102	106	127	122
<b>Mechanical</b>	202	188	260	245
<b>Grand Total</b>	1,063	1,098	1,477	1,420
	<b>Inspections</b>			
<b>Building</b>	2,771	2,666	3,279	2,898
<b>Electrical/In-Plant</b>	1,428/17	1,342/13	1,839/9	1,652/13
<b>Plumbing</b>	1,306	1,341	1,495	1,266
<b>Total</b>	5,522	5,362	6,622	5,829
	<b>Financial</b>			
<b>Fees</b>	607,551	603,638	941,089	813,708
<b>Valuation</b>	31,412,054	35,990,886	83,444,708	37,897,609

	<b>Building</b>	<b>Activity</b>		
2005	<b>May-05</b>	<b>Jun-05</b>	<b>Jul-05</b>	<b>Aug-05</b>
	<b>Plan</b>	<b>Review</b>		
<b>Submitted</b>	369	392	474	403
<b>Completed</b>	507	678	632	623
<b>Pending/Residential</b>	124	116	116	95
<b>Pending/Commercial</b>	33	32	34	18
<b>Grading</b>	27	23	14	28
	<b>Plan Review</b>	<b>Average Days</b>		
<b>Residential</b>	3 Weeks	3 Weeks	3 1/2 Weeks	3 1/2 Weeks
<b>Commercial</b>	4 1/2 Weeks	4 1/2 Weeks	4 1/2 Weeks	4 1/2 Weeks
	<b>Building</b>	<b>Assistance</b>		
<b>Phones</b>	4,108	4,736	4,286	5,215
<b>Counter</b>	974	1,148	1,041	1,120
<b>Files Finaled</b>	1,078	1,051	995	1,214
	<b>Permit</b>	<b>Issuance</b>		
<b>Single Family Res - New</b>	120	144	169	178
<b>Single Family Res - Add/Remodel</b>	48	51	85	61
<b>Multi Family - Bldgs/Units</b>	2/8	0	1/16	3/24
<b>Commercial/Industrial</b>	3	4	2	1
<b>Commercial - Add/Remodel</b>	46	40	25	52
<b>Manufactured Homes</b>	1	8	3	9
<b>Miscellaneous</b>	52	93	109	79
<b>Electrical</b>	752	834	796	897
<b>Plumbing</b>	141	157	151	169
<b>Mechanical</b>	278	391	321	328
<b>Grand Total</b>	1,451	1,722	1,678	1,801
	<b>Inspections</b>			
<b>Building</b>	3,166	3,690	3,437	4,712
<b>Electrical/In-Plant</b>	1,774/18	1,594/13	1,579/12	1,935/12
<b>Plumbing</b>	1,453	1,499	1,468	1,955
<b>Total</b>	6,411	6,796	6,496	8,614
	<b>Financial</b>			
<b>Fees</b>	1,067,141	879,761	1,022,673	1,024,387
<b>Valuation</b>	64,259,944	89,046,776	92,393,983	45,858,506



	<b>Building</b>	<b>Activity</b>		
<b>2005</b>	<b>Sept-05</b>	<b>Oct-05</b>	<b>Nov-05</b>	<b>Dec-05</b>
	<b>Plan</b>	<b>Review</b>		
<b>Submitted</b>	416	256	299	192
<b>Completed</b>	547	468	443	372
<b>Pending/Residential</b>	84	62	58	52
<b>Pending/Commercial</b>	32	10	24	11
<b>Grading</b>	19	20	14	8
	<b>Plan Review</b>	<b>Average Days</b>		
<b>Residential</b>	5 1/2 Weeks	6 1/2 Weeks	5 Weeks	7 1/2 Weeks
<b>Commercial</b>	4 Weeks	4 Weeks	4 Weeks	6 Weeks
	<b>Building</b>	<b>Assistance</b>		
<b>Phones</b>	4,462	4,386	3,780	3,820
<b>Counter</b>	1,196	1,106	922	843
<b>Files Finaled</b>	1,072	1,054	998	1,070
	<b>Permit</b>	<b>Issuance</b>		
<b>Single Family Res - New</b>	142	125	83	66
<b>Single Family Res - Add/Remodel</b>	77	85	72	48
<b>Multi Family - Bldgs/Units</b>	1/16	1/16	1/13	3/38
<b>Commercial/Industrial</b>	0	6	2	1
<b>Commercial - Add/Remodel</b>	49	148	17	18
<b>Manufactured Homes</b>	10	12	8	3
<b>Miscellaneous</b>	82	84	73	68
<b>Electrical</b>	640	708	489	463
<b>Plumbing</b>	157	233	89	102
<b>Mechanical</b>	249	315	291	236
<b>Grand Total</b>	1,423	1,733	1,138	1,046
	<b>Inspections</b>			
<b>Building</b>	3,950	3,990	3,644	3,494
<b>Electrical/In-Plant</b>	1,716/14	1,801/14	1,628/7	1,812/8
<b>Plumbing</b>	1,742	1,525	1,429	1,386
<b>Total</b>	7,422	7,330	6,708	6,700
	<b>Financial</b>			
<b>Fees</b>	737,038	943,479	504,288	526,331
<b>Valuation</b>	26,156,924	24,771,345	37,114,308	24,104,583

<b>Building</b>	<b>Activity</b>
<b>2005</b>	<b>Total Year to Date</b>
<b>Plan</b>	<b>Review</b>
Submitted	4,142
Completed	6,166
Pending/Residential	1,244
Pending/Commercial	305
Grading	223
<b>Plan Review</b>	<b>Average Days</b>
Residential	
Commercial	
<b>Building</b>	<b>Assistance</b>
Phones	48,088
Counter	12,033
Files Finaled	12,365
<b>Permit</b>	<b>Issuance</b>
Single Family Res - New	1,437
Single Family Res - Add/Remodel	740
Multi Family - Bldgs/Units	25/262
Commercial/Industrial	27
Commercial - Add/Remodel	512
Manufactured Homes	67
Miscellaneous	899
Electrical	8,120
Plumbing	1,656
Mechanical	3,304
Grand Total	17,050
<b>Inspections</b>	
Building	41,697
Electrical/In-Plant	20,100/150
Plumbing	17,865
Total	79,812
<b>Financial</b>	
Fees	9,671,084
Valuation	592,451,626

**Washington County Building Services Activity  
Calendar Year 2004**

		<b>Building</b>	<b>Activity</b>	
<b>2004</b>	<b>Jan-04</b>	<b>Feb-04</b>	<b>Mar-04</b>	<b>Apr-04</b>
		<b>Plan</b>	<b>Review</b>	
<b>Submitted</b>	179	228	317	344
<b>Completed</b>	264	389	458	494
<b>Pending/Residential</b>	92	85	124	120
<b>Pending/Commercial</b>	20	21	19	16
<b>Grading</b>	4	11	8	15
		<b>Plan Review</b>	<b>Average Days</b>	
<b>Residential</b>	3 1/2 Weeks	4 Weeks	2 1/2 Weeks	2 1/2 Weeks
<b>Commercial</b>	4 Weeks	4 Weeks	4 Weeks	4 Weeks
		<b>Building</b>	<b>Assistance</b>	
<b>Phones</b>	3,136	3,331	3,988	4,302
<b>Counter</b>	564	775	935	955
<b>Files Finaled</b>	603	631	743	812
		<b>Permit</b>	<b>Issuance</b>	
<b>Single Family Res - New</b>	72	110	127	135
<b>Single Family Res - Add/Remodel</b>	16	42	43	64
<b>Multi Family - Bldgs/Units</b>	0	0	0	0
<b>Commercial/Industrial</b>	1	5	0	3
<b>Commercial - Add/Remodel</b>	24	29	27	25
<b>Manufactured Homes</b>	4	1	7	8
<b>Miscellaneous</b>	28	53	37	58
<b>Electrical</b>	408	431	632	630
<b>Plumbing</b>	70	87	114	137
<b>Mechanical</b>	137	188	265	264
<b>Grand Total</b>	760	946	1,252	1,324
		<b>Inspections</b>		
<b>Building</b>	2,266	2,397	3,169	3,088
<b>Electrical/In-Plant</b>	889/13	921/15	1,215/19	1,170/19
<b>Plumbing</b>	842	1,046	1,492	1,410
<b>Total</b>	4,010	4,379	5,895	5,687
		<b>Financial</b>		
<b>Fees</b>	393,023	719,593	697,654	736,549
<b>Valuation</b>	22,248,709	27,382,351	49,678,073	42,564,972

	<b>Building</b>	<b>Activity</b>		
<b>2004</b>	<b>May-04</b>	<b>Jun-04</b>	<b>Jul-04</b>	<b>Aug-04</b>
	<b>Plan</b>	<b>Review</b>		
<b>Submitted</b>	282	379	315	356
<b>Completed</b>	509	535	458	559
<b>Pending/Residential</b>	103	92	122	98
<b>Pending/Commercial</b>	27	20	38	37
<b>Grading</b>	22	18	78	22
	<b>Plan Review</b>	<b>Average Days</b>		
<b>Residential</b>	2 1/2 Weeks	3 Weeks	3 Weeks	3 Weeks
<b>Commercial</b>	4 Weeks	4 1/2 Weeks	4 1/2 Weeks	4 1/2 Weeks
	<b>Building</b>	<b>Assistance</b>		
<b>Phones</b>	4,109	4,540	4,504	5,091
<b>Counter</b>	896	1,037	962	1,056
<b>Files Finaled</b>	798	1,058	964	1,027
	<b>Permit</b>	<b>Issuance</b>		
<b>Single Family Res - New</b>	141	119	145	121
<b>Single Family Res - Add/Remodel</b>	71	69	57	77
<b>Multi Family - Bldgs/Units</b>	0	0	0	0
<b>Commercial/Industrial</b>	1	4	3	2
<b>Commercial - Add/Remodel</b>	20	40	23	38
<b>Manufactured Homes</b>	11	9	11	6
<b>Miscellaneous</b>	90	83	70	115
<b>Electrical</b>	609	587	607	650
<b>Plumbing</b>	131	133	140	139
<b>Mechanical</b>	274	299	316	291
<b>Grand Total</b>	1,348	1,343	1,372	1,439
	<b>Inspections</b>			
<b>Building</b>	2,914	3,387	3,290	3,197
<b>Electrical/In-Plant</b>	1,219/11	1,277/15	1,245/18	1,289/12
<b>Plumbing</b>	1,426	1,628	1,526	1,592
<b>Total</b>	5,570	6,307	6,079	6,090
	<b>Financial</b>			
<b>Fees</b>	721,011	707,153	751,285	754,246
<b>Valuation</b>	37,512,153	41,259,042	35,176,651	41,115,233

	<b>Building</b>	<b>Activity</b>		
2004	Sep-04	Oct-04	Nov-04	Dec-04
	<b>Plan</b>	<b>Review</b>		
<b>Submitted</b>	315	261	316	623
<b>Completed</b>	503	433	538	529
<b>Pending/Residential</b>	105	71	58	54
<b>Pending/Commercial</b>	29	25	26	28
<b>Grading</b>	11	16	14	11
	<b>Plan Review</b>	<b>Average Days</b>		
<b>Residential</b>	3 Weeks	3 Weeks	3 Weeks	3 1/2 Weeks
<b>Commercial</b>	4 1/2 Weeks	4 1/2 Weeks	4 1/2 Weeks	4 1/2 Weeks
	<b>Building</b>	<b>Assistance</b>		
<b>Phones</b>	4,250	4,112	4,086	3,684
<b>Counter</b>	962	814	793	770
<b>Files Finaled</b>	960	854	945	1,004
	<b>Permit</b>	<b>Issuance</b>		
<b>Single Family Res - New</b>	116	108	83	111
<b>Single Family Res - Add/Remodel</b>	58	52	53	39
<b>Multi Family - Bldgs/Units</b>	0	0	1/17	8/47
<b>Commercial/Industrial</b>	5	4	7	2
<b>Commercial - Add/Remodel</b>	46	23	38	39
<b>Manufactured Homes</b>	3	2	3	5
<b>Miscellaneous</b>	75	67	58	59
<b>Electrical</b>	612	546	558	505
<b>Plumbing</b>	116	117	102	121
<b>Mechanical</b>	281	268	278	276
<b>Grand Total</b>	1,312	1,187	1,198	1,212
	<b>Inspections</b>			
<b>Building</b>	3,278	3,219	2,884	3,179
<b>Electrical/In-Plant</b>	1,661/6	1,577/15	1,480/5	1,417/18
<b>Plumbing</b>	1,425	1,523	1,264	1,371
<b>Total</b>	6,370	6,334	5,633	5,985
	<b>Financial</b>			
<b>Fees</b>	727,185	622,209	531,709	1,231,043
<b>Valuation</b>	33,671,847	27,815,900	118,447,658	36,498,063

<b>Building</b>	<b>Activity</b>
<b>2004</b>	<b>Total Year to Date</b>
<b>Plan</b>	<b>Review</b>
<b>Submitted</b>	3,915
<b>Completed</b>	5,669
<b>Pending/Residential</b>	1,124
<b>Pending/Commercial</b>	306
<b>Grading</b>	230
<b>Plan Review</b>	<b>Average Days</b>
<b>Residential</b>	
<b>Commercial</b>	
<b>Building</b>	<b>Assistance</b>
<b>Phones</b>	49,133
<b>Counter</b>	10,519
<b>Files Finaled</b>	10,399
<b>Permit</b>	<b>Issuance</b>
<b>Single Family Res - New</b>	1,388
<b>Single Family Res - Add/Remodel</b>	641
<b>Multi Family - Bldgs/Units</b>	9/64
<b>Commercial/Industrial</b>	37
<b>Commercial - Add/Remodel</b>	372
<b>Manufactured Homes</b>	70
<b>Miscellaneous</b>	793
<b>Electrical</b>	6,775
<b>Plumbing</b>	1,407
<b>Mechanical</b>	3,137
<b>Grand Total</b>	14,693
<b>Inspections</b>	
<b>Building</b>	36,268
<b>Electrical/In-Plant</b>	15,360/166
<b>Plumbing</b>	16,545
<b>Total</b>	68,339
<b>Financial</b>	
<b>Fees</b>	8,592,660
<b>Valuation</b>	513,370,652

**Washington County Building Services Activity  
Calendar Year 2003**

		<b>Building</b>	<b>Activity</b>	
<b>2003</b>	<b>Jan-03</b>	<b>Feb-03</b>	<b>Mar-03</b>	<b>Apr-03</b>
		<b>Plan</b>	<b>Review</b>	
<b>Submitted</b>	226	231	286	350
<b>Completed</b>	405	334	348	533
<b>Pending/Residential</b>	38	73	18	86
<b>Pending/Commercial</b>	24	20	85	23
<b>Grading</b>	8	10	6	15
		<b>Plan Review</b>	<b>Average Days</b>	
<b>Residential</b>	2 1/2 Weeks	2 1/2 Weeks	2 1/2 Weeks	2 1/2 Weeks
<b>Commercial</b>	4 Weeks	4 Weeks	4 Weeks	4 Weeks
		<b>Building</b>	<b>Assistance</b>	
<b>Phones</b>	4,601	4,112	4,019	4,262
<b>Counter</b>	819	777	845	890
<b>Files Finaled</b>	845	752	819	728
		<b>Permit</b>	<b>Issuance</b>	
<b>Single Family Res - New</b>	68	90	103	119
<b>Single Family Res - Add/Remodel</b>	47	24	48	46
<b>Multi Family - Bldgs/Units</b>	4/84	0	0	0
<b>Commercial/Industrial</b>	4	5	4	9
<b>Commercial - Add/Remodel</b>	18	22	20	46
<b>Manufactured Homes</b>	4	4	5	3
<b>Miscellaneous</b>	31	31	49	52
<b>Electrical</b>	366	410	377	421
<b>Plumbing</b>	101	80	76	125
<b>Mechanical</b>	136	158	135	179
<b>Grand Total</b>	863	824	817	1,000
		<b>Inspections</b>		
<b>Building</b>	2,520	2,378	2,513	2,502
<b>Electrical/In-Plant</b>	1,318/15	1,254/19	1,258/14	1,356/13
<b>Plumbing</b>	1,147	1,050	1,087	1,370
<b>Total</b>	5,000	4,701	4,872	5,241
		<b>Financial</b>		
<b>Fees</b>	473,840	590,419	528,105	563,052
<b>Valuation</b>	27,496,333	41,867,893	38,043,916	35,125,969
		*fees may be adjusted at fiscal year end		

		<b>Building</b>	<b>Activity</b>	
<b>2003</b>	<b>May-03</b>	<b>Jun-03</b>	<b>Jul-03</b>	<b>Aug-03</b>
		<b>Plan</b>	<b>Review</b>	
<b>Submitted</b>	260	301	358	340
<b>Completed</b>	394	341	422	409
<b>Pending/Residential</b>	67	91	93	96
<b>Pending/Commercial</b>	20	20	24	27
<b>Grading</b>	11	22	18	17
		<b>Plan Review</b>	<b>Average Days</b>	
<b>Residential</b>	3 Weeks	2 1/2 Weeks	3 Weeks	4 Weeks
<b>Commercial</b>	4 Weeks	4 Weeks	4 1/2 Weeks	4 1/2 Weeks
		<b>Building</b>	<b>Assistance</b>	
<b>Phones</b>	4,460	4,406	5,159	4,720
<b>Counter</b>	937	952	999	983
<b>Files Finaled</b>	672	941	1,025	973
		<b>Permit</b>	<b>Issuance</b>	
<b>Single Family Res - New</b>	145	117	99	102
<b>Single Family Res - Add/Remodel</b>	58	56	60	105
<b>Multi Family - Bldgs/Units</b>	0	0	0	0
<b>Commercial/Industrial</b>	3	9	19	17
<b>Commercial - Add/Remodel</b>	18	26	56	29
<b>Manufactured Homes</b>	4	4	6	3
<b>Miscellaneous</b>	64	76	75	71
<b>Electrical</b>	481	559	493	449
<b>Plumbing</b>	101	112	127	111
<b>Mechanical</b>	208	302	309	198
<b>Grand Total</b>	1,082	1,261	1,244	1,085
		<b>Inspections</b>		
<b>Building</b>	3,113	3,932	3,488	3,407
<b>Electrical/In-Plant</b>	1,390/15	1,354/10	1,279/17	1,179/16
<b>Plumbing</b>	1,407	1,515	1,398	1,327
<b>Total</b>	5,925	6,811	6,182	5,929
		<b>Financial</b>		
<b>Fees</b>	900,315	731,617	761,837	582,521
<b>Valuation</b>	50,920,188	33,565,965*	31,810,640	30,884,836



		<b>Building</b>	<b>Activity</b>	
<b>2003</b>	<b>Sep-03</b>	<b>Oct-03</b>	<b>Nov-03</b>	<b>Dec-03</b>
		<b>Plan</b>	<b>Review</b>	
<b>Submitted</b>	304	280	235	222
<b>Completed</b>	515	500	304	444
<b>Pending/Residential</b>	62	55	82	80
<b>Pending/Commercial</b>	38	23	37	17
<b>Grading</b>	18	22	9	9
		<b>Plan Review</b>	<b>Average Days</b>	
<b>Residential</b>	3 Weeks	2 1/2 Weeks	3 1/2 Weeks	3 1/2 Weeks
<b>Commercial</b>	5 Weeks	4 1/2 Weeks	4 1/2 Weeks	4 1/2 Weeks
		<b>Building</b>	<b>Assistance</b>	
<b>Phones</b>	4,633	5,161	4	4,196
<b>Counter</b>	1,053	969	737	725
<b>Files Finaled</b>	840	851	750	787
		<b>Permit</b>	<b>Issuance</b>	
<b>Single Family Res - New</b>	76	147	69	60
<b>Single Family Res - Add/Remodel</b>	59	76	30	42
<b>Multi Family - Bldgs/Units</b>	4/96	0	0	0
<b>Commercial/Industrial</b>	4	4	2	3
<b>Commercial - Add/Remodel</b>	28	29	20	23
<b>Manufactured Homes</b>	7	4	3	5
<b>Miscellaneous</b>	92	81	46	52
<b>Electrical</b>	484	471	408	429
<b>Plumbing</b>	144	130	96	85
<b>Mechanical</b>	223	214	261	184
<b>Grand Total</b>	1,217	1,156	935	883
		<b>Inspections</b>		
<b>Building</b>	2,923	3,007	2,562	2,636
<b>Electrical/In-Plant</b>	1,249/16	1,344/12	974/12	1,003/13
<b>Plumbing</b>	1,111	1,488	1,090	993
<b>Total</b>	5,299	5,848	4,638	4,645
		<b>Financial</b>		
<b>Fees</b>	795,492	675,277	476,248	466,213
<b>Valuation</b>	46,084,547	23,973,085	30,062,656	30,953,117

<b>Building</b>	<b>Activity</b>
<b>2003</b>	<b>Total Year to Date</b>
<b>Plan</b>	<b>Review</b>
Submitted	3,393
Completed	4,949
Pending/Residential	841
Pending/Commercial	358
Grading	165
<b>Plan Review</b>	<b>Average Days</b>
Residential	
Commercial	
<b>Building</b>	<b>Assistance</b>
Phones	53,913
Counter	10,686
Files Finaled	9,983
<b>Permit</b>	<b>Issuance</b>
Single Family Res - New	1,195
Single Family Res - Add/Remodel	651
Multi Family - Bldgs/Units	8/180
Commercial/Industrial	83
Commercial - Add/Remodel	335
Manufactured Homes	52
Miscellaneous	720
Electrical	5,348
Plumbing	1,288
Mechanical	2,507
Grand Total	12,367
<b>Inspections</b>	
Building	34,981
Electrical/In-Plant	14,958/172
Plumbing	14,983
Total	65,094
<b>Financial</b>	
Fees	7,544,936
Valuation	420,789,145

**Washington County Building Services Activity**  
**Calendar Year 2002**

		<b>Building</b>	<b>Activity</b>	
	<b>2002</b>	<b>Jan-02</b>	<b>Feb-02</b>	<b>Mar-02</b>
				<b>Apr-02</b>
		<b>Plan</b>	<b>Review</b>	
<b>Submitted</b>	244	217	396	244
<b>Completed</b>	329	398	582	425
<b>Pending/Residential</b>	59	42	89	33
<b>Pending/Commercial</b>	30	35	33	16
<b>Grading</b>	9	2	6	0
		<b>Plan Review</b>	<b>Average Days</b>	
<b>Residential</b>	3 1/2 Weeks	2 1/2 Weeks	3 1/2 Weeks	3 1/2 Weeks
<b>Commercial</b>	4 Weeks	4 Weeks	4 1/2 Weeks	4 1/2 Weeks
		<b>Building</b>	<b>Assistance</b>	
<b>Phones</b>	5,051	4,684	4,910	4,706
<b>Counter</b>	805	730	810	882
<b>Files Finaled</b>	1,087	21	645	580
		<b>Permit</b>	<b>Issuance</b>	
<b>Single Family Res - New</b>	122	90	111	98
<b>Single Family Res - Add/Remodel</b>	43	38	38	45
<b>Multi Family - Bldgs/Units</b>	0	2/12	7/133	9/40
<b>Commercial/Industrial</b>	4	2	1	3
<b>Commercial - Add/Remodel</b>	18	52	23	22
<b>Manufactured Homes</b>	34	2	3	4
<b>Miscellaneous</b>	35	23	32	44
<b>Electrical</b>	421	387	393	469
<b>Plumbing</b>	79	71	100	98
<b>Mechanical</b>	136	144	134	175
<b>Grand Total</b>	892	823	975	1,007
		<b>Inspections</b>		
<b>Building/Mechanical</b>	2,817	2,956	2,872	3,130
<b>Electrical/In-Plant</b>	1,226/25	1,332/13	1,261/23	1,302/18
<b>Plumbing</b>	1,172	1,228	1,244	1,335
<b>Total</b>	5,240	5,529	5,400	5,785
		<b>Financial</b>		
<b>Fees</b>	448,050	375,041	677,453	698,941
<b>Valuation</b>	18,923,777	25,044,300	76,180,435	26,462,399

	<b>Building</b>	<b>Activity</b>		
<b>2002</b>	<b>May-02</b>	<b>Jun-02</b>	<b>Jul-02</b>	<b>Aug-02</b>
	<b>Plan</b>	<b>Review</b>		
<b>Submitted</b>	423	352	242	286
<b>Completed</b>	562	446	500	506
<b>Pending/Residential</b>	77	67	37	41
<b>Pending/Commercial</b>	48	39	40	52
<b>Grading</b>	6	6	9	10
	<b>Plan Review</b>	<b>Average Days</b>		
<b>Residential</b>	3 Weeks	3 Weeks	2 1/2 Weeks	2 1/2 Weeks
<b>Commercial</b>	4 Weeks	4 1/2 Weeks	4 1/2 Weeks	4 1/2 Weeks
	<b>Building</b>	<b>Assistance</b>		
<b>Phones</b>	4,337	4,630	4,948	4,381
<b>Counter</b>	1,037	970	1,062	1,084
<b>Files Finaled</b>	715	584	727	296
	<b>Permit</b>	<b>Issuance</b>		
<b>Single Family Res - New</b>	160	106	119	89
<b>Single Family Res - Add/Remodel</b>	69	58	66	65
<b>Multi Family - Bldgs/Units</b>	10/40	16/68	13/65	0
<b>Commercial/Industrial</b>	2	2	3	8
<b>Commercial - Add/Remodel</b>	31	30	28	54
<b>Manufactured Homes</b>	7	10	5	8
<b>Miscellaneous</b>	42	39	50	40
<b>Electrical</b>	543	522	517	529
<b>Plumbing</b>	129	141	141	125
<b>Mechanical</b>	175	195	249	217
<b>Grand Total</b>	1,208	1,187	1,256	1,135
	<b>Inspections</b>			
<b>Building/Mechanical</b>	3,568	3,230	3,437	3,405
<b>Electrical/In-Plant</b>	1,312/16	1,367/19	1,550/21	1,646/25
<b>Plumbing</b>	1,512	1,320	1,486	1,380
<b>Total</b>	6,408	5,936	6,494	6,456
	<b>Financial</b>			
<b>Fees</b>	549,949	539,244	697,544	594,006
<b>Valuation</b>	40,535,029	38,882,374	53,743,773	26,763,355

	<b>Building</b>	<b>Activity</b>		
2002	Sep-02	Oct-02	Nov-02	Dec-02
	<b>Plan</b>	<b>Review</b>		
Submitted	206	270	196	180
Completed	423	436	297	309
Pending/Residential	36	49	26	29
Pending/Commercial	35	30	26	24
Grading	4	7	7	3
	<b>Plan Review</b>	<b>Average Days</b>		
Residential	3 1/2 Weeks	2 Weeks	2 Weeks	2 1/2 Weeks
Commercial	4 1/2 Weeks	4 Weeks	4 Weeks	4 Weeks
	<b>Building</b>	<b>Assistance</b>		
Phones	4,969	5,222	4,405	3,893
Counter	964	1,060	754	736
Files Finaled	709	1,000	782	
	<b>Permit</b>	<b>Issuance</b>		
Single Family Res - New	67	93	47	67
Single Family Res - Add/Remodel	53	61	44	44
Multi Family - Bldgs/Units	0	0	0	0
Commercial/Industrial	6	7	4	0
Commercial - Add/Remodel	38	35	15	29
Manufactured Homes	8	4	3	2
Miscellaneous	30	57	31	22
Electrical	512	496	363	361
Plumbing	113	131	80	69
Mechanical	197	243	195	199
Grand Total	1,024	1,127	782	793
	<b>Inspections</b>			
Building/Mechanical	3,258	3,815	2,827	2,641
Electrical/In-Plant	1,575/7	1,978/24	1,525/12	1,409/15
Plumbing	1,291	1,401	1,044	986
Total	6,131	7,218	5,408	5,051
	<b>Financial</b>			
Fees	376,072	675,784	377,333	387,460
Valuation	30,596,595	22,667,239	14,309,551	23,117,126

<b>Building</b>	<b>Activity</b>
<b>2002</b>	<b>Total Year to Date</b>
<b>Plan</b>	<b>Review</b>
Submitted	3,256
Completed	5,213
Pending/Residential	585
Pending/Commercial	408
Grading	69
<b>Plan Review</b>	<b>Average Days</b>
Residential	
Commercial	
<b>Building</b>	<b>Assistance</b>
Phones	56,136
Counter	10,894
Files Finaled	
<b>Permit</b>	<b>Issuance</b>
Single Family Res - New	1,169
Single Family Res - Add/Remodel	624
Multi Family - Bldgs/Units	57/358
Commercial/Industrial	42
Commercial - Add/Remodel	375
Manufactured Homes	90
Miscellaneous	445
Electrical	5,513
Plumbing	1,277
Mechanical	2,259
Grand Total	12,209
<b>Inspections</b>	
Building/Mechanical	37,956
Electrical/In-Plant	17,483/218
Plumbing	15,399
Total	71,056
<b>Financial</b>	
Fees	6,396,877
Valuation	397,225,953

**Washington County Building Services Activity  
Calendar Year 2001**

		<b>Building</b>	<b>Activity</b>	
<b>2001</b>	<b>Jan-01</b>	<b>Feb-01</b>	<b>Mar-01</b>	<b>Apr-01</b>
		<b>Plan</b>	<b>Review</b>	
<b>Submitted</b>	267	252	258	300
<b>Completed</b>	386	380	412	393
<b>Pending/Residential</b>	71	94	56	78
<b>Pending/Commercial</b>	15	43	38	36
<b>Grading</b>	4	11	9	13
		<b>Plan Review</b>	<b>Average Days</b>	
<b>Residential</b>	2 1/2 Weeks	3 1/2 Weeks	2 1/2 Weeks	4 Weeks
<b>Commercial</b>	6 Weeks	6 Weeks	6 Weeks	7 Weeks
		<b>Building</b>	<b>Assistance</b>	
<b>Phones</b>	5,624	5,092	5,412	5,255
<b>Counter</b>	845	800	927	906
<b>Files Finaled</b>	520	448	569	585
		<b>Permit</b>	<b>Issuance</b>	
<b>Single Family Res - New</b>	134	112	150	104
<b>Single Family Res - Add/Remodel</b>	39	29	41	28
<b>Multi Family - Bldgs/Units</b>	2/86	3/15	2/8	0
<b>Commercial/Industrial</b>	12	13	3	2
<b>Commercial - Add/Remodel</b>	38	29	27	33
<b>Manufactured Homes</b>	4	2	5	6
<b>Miscellaneous</b>	26	22	58	49
<b>Electrical</b>	362	305	373	353
<b>Plumbing</b>	73	66	69	81
<b>Mechanical</b>	148	99	147	114
<b>Grand Total</b>	924	695	883	770
		<b>Inspections</b>		
<b>Building/Mechanical</b>	4,270	3,553	3,655	3,185
<b>Electrical/In-Plant</b>	1,859/8	1,478/13	1,525/20	1,398/16
<b>Plumbing</b>	1,710	1,303	1,616	1,377
<b>Total</b>	7,847	6,347	6,816	5,976
		<b>Financial</b>		
<b>Fees</b>	391,727	434,919	426,894	407,544
<b>Valuation</b>	22,815,421	43,464,495	80,019,031	57,011,581

	<b>Building</b>	<b>Activity</b>		
2001	<b>May-01</b>	<b>Jun-01</b>	<b>Jul-01</b>	<b>Aug-01</b>
	<b>Plan</b>	<b>Review</b>		
<b>Submitted</b>	286	485	382	306
<b>Completed</b>	591	444	762	522
<b>Pending/Residential</b>	56	41	31	38
<b>Pending/Commercial</b>	28	46	30	35
<b>Grading</b>	15	16	12	10
	<b>Plan Review</b>	<b>Average Days</b>		
<b>Residential</b>	2 1/2 Weeks	3 Weeks	3 1/2 Weeks	3 1/2 Weeks
<b>Commercial</b>	6 Weeks	6 Weeks	5 Weeks	5 Weeks
	<b>Building</b>	<b>Assistance</b>		
<b>Phones</b>	5,790	5,804	5,444	6,703
<b>Counter</b>	1,036	1,086	1,006	1,135
<b>Files Finaled</b>	533	660	711	650
	<b>Permit</b>	<b>Issuance</b>		
<b>Single Family Res - New</b>	116	102	94	98
<b>Single Family Res - Add/Remodel</b>	45	63	67	51
<b>Multi Family - Bldgs/Units</b>	2/12	0	0	21/343
<b>Commercial/Industrial</b>	3	11	3	6
<b>Commercial - Add/Remodel</b>	18	30	33	44
<b>Manufactured Homes</b>	4	6	6	5
<b>Miscellaneous</b>	41	58	56	89
<b>Electrical</b>	417	462	406	521
<b>Plumbing</b>	112	121	101	166
<b>Mechanical</b>	170	198	154	192
<b>Grand Total</b>	940	1,051	920	1,536
	<b>Inspections</b>			
<b>Building/Mechanical</b>	3,436	3,558	3,316	3,705
<b>Electrical/In-Plant</b>	1,577/20	1,537/14	1,683/12	1,751/23
<b>Plumbing</b>	1,539	1,451	1,240	1,527
<b>Total</b>	6,572	6,560	6,251	7,006
	<b>Financial</b>			
<b>Fees</b>	499,292	686,722	750,561	518,001
<b>Valuation</b>	37,135,253	60,263,564	26,673,077	28,039,639



	<b>Building</b>	<b>Activity</b>		
2001	Sep-01	Oct-01	Nov-01	Dec-01
	<b>Plan</b>	<b>Review</b>		
<b>Submitted</b>	375	272	251	254
<b>Completed</b>	380	417	295	415
<b>Pending/Residential</b>	37	18	29	35
<b>Pending/Commercial</b>	36	35	36	24
<b>Grading</b>	12	9	9	7
	<b>Plan Review</b>	<b>Average Days</b>		
<b>Residential</b>	4 Weeks	2 Weeks	2 Weeks	3 1/2 Weeks
<b>Commercial</b>	4 Weeks	4 Weeks	4 Weeks	4 Weeks
	<b>Building</b>	<b>Assistance</b>		
<b>Phones</b>	5,472	5,681	4,749	4,440
<b>Counter</b>	823	972	797	781
<b>Files Finaled</b>	661	665	612	1,427
	<b>Permit</b>	<b>Issuance</b>		
<b>Single Family Res - New</b>	79	100	41	56
<b>Single Family Res - Add/Remodel</b>	45	42	37	37
<b>Multi Family - Bldgs/Units</b>	0	5/74	0	0
<b>Commercial/Industrial</b>	0	6	7	4
<b>Commercial - Add/Remodel</b>	31	22	22	19
<b>Manufactured Homes</b>	2	4	0	36
<b>Miscellaneous</b>	39	53	39	44
<b>Electrical</b>	391	440	342	341
<b>Plumbing</b>	105	128	112	77
<b>Mechanical</b>	152	211	182	145
<b>Grand Total</b>	844	1,085	782	759
	<b>Inspections</b>			
<b>Building/Mechanical</b>	2,964	3,367	2,766	2,147
<b>Electrical/In-Plant</b>	1,461/16	1,622/15	1,377/14	1,120/23
<b>Plumbing</b>	1,358	1,476	1,169	764
<b>Total</b>	5,799	6,480	5,326	4,054
	<b>Financial</b>			
<b>Fees</b>	437,950	466,930	281,055	339,459
<b>Valuation</b>	38,883,518	27,617,167	22,721,147	23,540,240

<b>Building</b>	<b>Activity</b>
<b>2001</b>	<b>Total Year to Date</b>
<b>Plan</b>	<b>Review</b>
Submitted	3,688
Completed	5,397
Pending/Residential	584
Pending/Commercial	402
Grading	127
<b>Plan Review</b>	<b>Average Days</b>
Residential	
Commercial	
<b>Building</b>	<b>Assistance</b>
Phones	65,466
Counter	11,114
Files Finaled	8,041
<b>Permit</b>	<b>Issuance</b>
Single Family Res - New	1,186
Single Family Res - Add/Remodel	524
Multi Family - Bldgs/Units	35/538
Commercial/Industrial	70
Commercial - Add/Remodel	346
Manufactured Homes	80
Miscellaneous	574
Electrical	4,713
Plumbing	1,211
Mechanical	1,912
Grand Total	11,189
<b>Inspections</b>	
Building/Mechanical	39,922
Electrical/In-Plant	18,388/194
Plumbing	16,530
Total	75,034
<b>Financial</b>	
Fees	5,641,054
Valuation	468,184,133

**Washington County Building Services Activity  
Calendar Year 2000**

		<b>Building</b>	<b>Activity</b>	
<b>2000</b>	<b>Jan-00</b>	<b>Feb-00</b>	<b>Mar-00</b>	<b>Apr-00</b>
		<b>Plan</b>	<b>Review</b>	
<b>Submitted</b>	197	307	300	369
<b>Completed</b>	232	249	426	357
<b>Pending/Residential</b>	47	56	79	62
<b>Pending/Commercial</b>	17	13	14	16
<b>Grading</b>	1	7	7	6
		<b>Plan Review</b>	<b>Average Days</b>	
<b>Residential</b>	3 Weeks	4 Weeks	2 1/2 Weeks	3 Weeks
<b>Commercial</b>	5 Weeks	5 Weeks	7 Weeks	6 Weeks
		<b>Building</b>	<b>Assistance</b>	
<b>Phones</b>	5,862	6,077	6,621	7,348
<b>Counter</b>	738	832	1,046	954
<b>Files Finaled</b>	98	147	200	544
		<b>Permit</b>	<b>Issuance</b>	
<b>Single Family Res - New</b>	110	86	118	135
<b>Single Family Res - Add/Remodel</b>	22	38	48	53
<b>Multi Family - Bldgs/Units</b>	0	0	1/0	0
<b>Commercial/Industrial</b>	5	7	13	1
<b>Commercial - Add/Remodel</b>	10	13	21	11
<b>Manufactured Homes</b>	2	5	8	5
<b>Miscellaneous</b>	42	42	40	54
<b>Electrical</b>	428	397	503	432
<b>Plumbing</b>	87	108	114	100
<b>Mechanical</b>	132	126	196	144
<b>Grand Total</b>	838	822	1,062	935
		<b>Inspections</b>		
<b>Building</b>	2,554	2,936	3,324	3,090
<b>Electrical/In-Plant</b>	1,320/14	1,380/15	1,520/12	1,473/18
<b>Plumbing</b>	1,389	1,450	1,438	1,545
<b>Total</b>	5,277	5,781	6,294	6,126
		<b>Financial</b>		
<b>Fees</b>	266,719	507,396	323,132	309,016
<b>Valuation</b>	20,273,800	28,886,353	23,811,915	26,665,007

	<b>Building</b>	<b>Activity</b>		
<b>2000</b>	<b>May-00</b>	<b>Jun-00</b>	<b>Jul-00</b>	<b>Aug-00</b>
	<b>Plan</b>	<b>Review</b>		
<b>Submitted</b>	369	560	282	313
<b>Completed</b>	574	542	476	595
<b>Pending/Residential</b>	103	200	105	104
<b>Pending/Commercial</b>	23	16	17	20
<b>Grading</b>	16	11	16	19
	<b>Plan Review</b>	<b>Average Days</b>		
<b>Residential</b>	4 Weeks	4 Weeks	5 Weeks	3 Weeks
<b>Commercial</b>	6 Weeks	6 Weeks	6 Weeks	5 Weeks
	<b>Building</b>	<b>Assistance</b>		
<b>Phones</b>	8,511	7,771	7,206	7,049
<b>Counter</b>	1,090	1,222	1,064	1,181
<b>Files Finaled</b>	526	583	527	538
	<b>Permit</b>	<b>Issuance</b>		
<b>Single Family Res - New</b>	148	137	138	149
<b>Single Family Res - Add/Remodel</b>	51	62	47	55
<b>Multi Family - Bldgs/Units</b>	0	0	0	1/4
<b>Commercial/Industrial</b>	1	4	6	3
<b>Commercial - Add/Remodel</b>	23	32	28	37
<b>Manufactured Homes</b>	9	5	8	5
<b>Miscellaneous</b>	67	64	68	89
<b>Electrical</b>	525	585	405	538
<b>Plumbing</b>	99	105	106	95
<b>Mechanical</b>	179	206	214	250
<b>Grand Total</b>	1,102	1,200	1,024	1,251
	<b>Inspections</b>			
<b>Building</b>	3,349	3,445	3,377	3,715
<b>Electrical/In-Plant</b>	1,682/11	1,696/14	1,681/20	1,946/23
<b>Plumbing</b>	1,700	1,806	1,602	1,876
<b>Total</b>	6,742	6,961	6,680	7,560
	<b>Financial</b>			
<b>Fees</b>	463,757	515,441	486,374	465,628
<b>Valuation</b>	30,917,790	52,107,774	23,527,115	32,896,718

	<b>Building</b>	<b>Activity</b>		
<b>2000</b>	<b>Sep-00</b>	<b>Oct-00</b>	<b>Nov-00</b>	<b>Dec-00</b>
	<b>Plan</b>	<b>Review</b>		
<b>Submitted</b>	278	332	247	213
<b>Completed</b>	458	423	417	443
<b>Pending/Residential</b>	53	67	79	69
<b>Pending/Commercial</b>	21	16	10	18
<b>Grading</b>	7	9	4	6
	<b>Plan Review</b>	<b>Average Days</b>		
<b>Residential</b>	3 Weeks	2 1/2 Weeks	3 Weeks	3 Weeks
<b>Commercial</b>	5 Weeks	8 Weeks	7 Weeks	6 Weeks
	<b>Building</b>	<b>Assistance</b>		
<b>Phones</b>	6,148	6,482	6,607	5,564
<b>Counter</b>	1,052	1,049	838	759
<b>Files Finaled</b>	443	431	434	602
	<b>Permit</b>	<b>Issuance</b>		
<b>Single Family Res - New</b>	135	127	152	136
<b>Single Family Res - Add/Remodel</b>	45	40	29	28
<b>Multi Family - Bldgs/Units</b>	0	0	0	0
<b>Commercial/Industrial</b>	17	29	16	16
<b>Commercial - Add/Remodel</b>	50	29	35	23
<b>Manufactured Homes</b>	2	8	5	3
<b>Miscellaneous</b>	64	49	33	35
<b>Electrical</b>	456	424	315	319
<b>Plumbing</b>	70	95	97	60
<b>Mechanical</b>	183	183	178	179
<b>Grand Total</b>	1,022	984	860	799
	<b>Inspections</b>			
<b>Building</b>	3,711	3,932	3,787	3,726
<b>Electrical/In-Plant</b>	1,749/22	1,768/7	1,535/13	1,590/11
<b>Plumbing</b>	1,805	1,951	1,680	1,452
<b>Total</b>	7,287	7,658	7,015	6,779
	<b>Financial</b>			
<b>Fees</b>	432,609	368,825	421,583	445,452
<b>Valuation</b>	25,856,854	42,554,620	24,363,784	42,917,014

<b>Building</b>	<b>Activity</b>
<b>2000</b>	<b>Total Year to Date</b>
<b>Plan</b>	<b>Review</b>
Submitted	3,767
Completed	5,192
Pending/Residential	1,024
Pending/Commercial	201
Grading	109
<b>Plan Review</b>	<b>Average Days</b>
Residential	
Commercial	
<b>Building</b>	<b>Assistance</b>
Phones	81,246
Counter	11,825
Files Finaled	5,073
<b>Permit</b>	<b>Issuance</b>
Single Family Res - New	1,571
Single Family Res - Add/Remodel	518
Multi Family - Bldgs/Units	2/4
Commercial/Industrial	118
Commercial - Add/Remodel	312
Manufactured Homes	65
Miscellaneous	647
Electrical	5,327
Plumbing	1,136
Mechanical	2,170
Grand Total	11,899
<b>Inspections</b>	
Building	40,946
Electrical/In-Plant	19,340/180
Plumbing	19,694
Total	80,160
<b>Financial</b>	
Fees	5,005,932
Valuation	374,778,744

**Washington County Building Services Activity**  
**Calendar Year 1999**

		<b>Building</b>	<b>Activity</b>	
<b>1999</b>	<b>Jan-99</b>	<b>Feb-99</b>	<b>Mar-99</b>	<b>Apr-99</b>
		<b>Plan</b>	<b>Review</b>	
<b>Submitted</b>	262	205	346	326
<b>Completed</b>	265	234	393	552
<b>Pending/Residential</b>	105	98	125	68
<b>Pending/Commercial</b>	25	16	21	19
<b>Grading</b>	3	1	4	13
		<b>Plan Review</b>	<b>Average Days</b>	
<b>Residential</b>	4 Weeks	4 Weeks	5 Weeks	4 Weeks
<b>Commercial</b>	7 Weeks	7 Weeks	8 Weeks	6 Weeks
		<b>Building</b>	<b>Assistance</b>	
<b>Phones</b>	5,322	5,612	7,046	7,154
<b>Counter</b>	757	722	986	1,078
<b>Files Finaled</b>	150	240	199	182
		<b>Permit</b>	<b>Issuance</b>	
<b>Single Family Res - New</b>	119	90	137	180
<b>Single Family Res - Add/Remode</b>	24	25	40	62
<b>Multi Family - Bldgs/Units</b>	0	5/50	0	1/4
<b>Commercial/Industrial</b>	5	3	6	5
<b>Commercial - Add/Remodel</b>	13	9	16	20
<b>Manufactured Homes</b>	6	5	8	13
<b>Miscellaneous</b>	39	46	57	84
<b>Electrical</b>	284	312	351	362
<b>Plumbing</b>	76	66	102	74
<b>Mechanical</b>	145	106	147	160
<b>Grand Total</b>	711	717	864	965
		<b>Inspections</b>		
<b>Building</b>	2,987	2,852	3,497	3,667
<b>Electrical/In-Plant</b>	1,266/10	1,157/9	1,345/10	1,449/12
<b>Plumbing</b>	1,393	1,611	1,926	1,939
<b>Total</b>	5,656	5,629	6,778	7,067
		<b>Financial</b>		
<b>Fees</b>	297,705	294,321	515,650	333,640
<b>Valuation</b>	21,513,053	16,583,622	27,883,540	24,329,860

	<b>Building</b>	<b>Activity</b>		
<b>1999</b>	<b>May-99</b>	<b>Jun-99</b>	<b>Jul-99</b>	<b>Aug-99</b>
	<b>Plan</b>	<b>Review</b>		
<b>Submitted</b>	374	326	419	373
<b>Completed</b>	500	428	365	435
<b>Pending/Residential</b>	64	88	75	82
<b>Pending/Commercial</b>	20	26	22	33
<b>Grading</b>	22	20	16	22
	<b>Plan Review</b>	<b>Average Days</b>		
<b>Residential</b>	4 Weeks	3 Weeks	3 Weeks	3 Weeks
<b>Commercial</b>	6 Weeks	5 Weeks	5 Weeks	5 Weeks
	<b>Building</b>	<b>Assistance</b>		
<b>Phones</b>	5,969	7,705	7,336	5,976
<b>Counter</b>	975	1,109	997	1,067
<b>Files Finaled</b>	125	94	57	103
	<b>Permit</b>	<b>Issuance</b>		
<b>Single Family Res - New</b>	145	162	146	121
<b>Single Family Res - Add/Remodel</b>	60	55	53	46
<b>Multi Family - Bldgs/Units</b>	0	0	0	0
<b>Commercial/Industrial</b>	5	10	9	8
<b>Commercial - Add/Remodel</b>	18	26	13	34
<b>Manufactured Homes</b>	7	10	6	7
<b>Miscellaneous</b>	71	43	96	56
<b>Electrical</b>	371	429	461	414
<b>Plumbing</b>	86	113	115	112
<b>Mechanical</b>	165	216	179	165
<b>Grand Total</b>	928	1,064	1,078	963
	<b>Inspections</b>			
<b>Building</b>	3,246	3,732	3,599	3,441
<b>Electrical/In-Plant</b>	1,361/6	1,570/9	1,589/23	1,542/10
<b>Plumbing</b>	1,721	2,083	2,068	1,825
<b>Total</b>	6,334	7,394	7,279	6,818
	<b>Financial</b>			
<b>Fees</b>	328,331	363,068	365,894	305,207
<b>Valuation</b>	31,004,808	23,860,101	43,140,431	32,015,960



	<b>Building</b>	<b>Activity</b>		
<b>1999</b>	<b>Sep-99</b>	<b>Oct-99</b>	<b>Nov-99</b>	<b>Dec-99</b>
	<b>Plan</b>	<b>Review</b>		
<b>Submitted</b>	286	255	226	199
<b>Completed</b>	493	348	248	397
<b>Pending/Residential</b>	54	44	62	53
<b>Pending/Commercial</b>	44	24	29	16
<b>Grading</b>	6	13	1	5
	<b>Plan Review</b>	<b>Average Days</b>		
<b>Residential</b>	2 Weeks	2 Weeks	2 1/2 Weeks	3 Weeks
<b>Commercial</b>	5 Weeks	5 Weeks	6 Weeks	5 Weeks
	<b>Building</b>	<b>Assistance</b>		
<b>Phones</b>	6,954	6,574	6,334	6,341
<b>Counter</b>	1,070	1,006	865	730
<b>Files Finaled</b>	144	138	66	88
	<b>Permit</b>	<b>Issuance</b>		
<b>Single Family Res - New</b>	170	105	74	72
<b>Single Family Res - Add/Remodel</b>	60	43	31	26
<b>Multi Family - Bldgs/Units</b>	6/21	10/65	4/8	0
<b>Commercial/Industrial</b>	17	7	4	7
<b>Commercial - Add/Remodel</b>	25	32	9	16
<b>Manufactured Homes</b>	13	10	9	11
<b>Miscellaneous</b>	80	53	40	44
<b>Electrical</b>	643	388	387	360
<b>Plumbing</b>	133	126	83	80
<b>Mechanical</b>	190	237	210	186
<b>Grand Total</b>	1,358	1,076	859	802
	<b>Inspections</b>			
<b>Building</b>	3,572	3,742	3,067	2,757
<b>Electrical/In-Plant</b>	1,765/4	1,680/8	1,291/10	1,381/12
<b>Plumbing</b>	1,884	1,905	1,518	1,350
<b>Total</b>	7,225	7,335	5,886	5,500
	<b>Financial</b>			
<b>Fees</b>	532,991	296,010	267,436	250,485
<b>Valuation</b>	19,696,975	16,236,846	16,095,067	17,678,175

	<b>Building Activity</b>
<b>1999</b>	<b>Total Year to Date</b>
	<b>Plan Review</b>
<b>Submitted</b>	3,597
<b>Completed</b>	4,658
<b>Pending/Residential</b>	918
<b>Pending/Commercial</b>	295
<b>Grading</b>	126
	<b>Plan Review Average Days</b>
<b>Residential</b>	
<b>Commercial</b>	
	<b>Building Assistance</b>
<b>Phones</b>	78,323
<b>Counter</b>	11,362
<b>Files Finaled</b>	1,586
	<b>Permit Issuance</b>
<b>Single Family Res - New</b>	1,521
<b>Single Family Res - Add/Remodel</b>	525
<b>Multi Family - Bldgs/Units</b>	26/148
<b>Commercial/Industrial</b>	86
<b>Commercial - Add/Remodel</b>	231
<b>Manufactured Homes</b>	105
<b>Miscellaneous</b>	709
<b>Electrical</b>	4,762
<b>Plumbing</b>	1,166
<b>Mechanical</b>	2,106
<b>Grand Total</b>	11,385
	<b>Inspections</b>
<b>Building</b>	40,159
<b>Electrical/In-Plant</b>	17,396/123
<b>Plumbing</b>	21,223
<b>Total</b>	78,901
	<b>Financial</b>
<b>Fees</b>	4,150,738
<b>Valuation</b>	290,038,438

**Washington County Building Services Activity**  
**Calendar Year 1998**

	<b>Building</b>		<b>Activity</b>	
<b>1998</b>	<b>Jan-98</b>	<b>Feb-98</b>	<b>Mar-98</b>	<b>Apr-98</b>
	<b>Plan</b>		<b>Review</b>	
Submitted	215	307	336	380
Completed	212	309	395	357
Pending/Residential	88	55	90	77
Pending/Commercial	46	42	38	12
Grading	12	10	14	12
		<b>Plan Review</b>	<b>Average Days</b>	
Residential	4 Weeks	2 1/2 Weeks	3 Weeks	3 1/2 Weeks
Commercial	7 Weeks	7 Weeks	7 Weeks	6 Weeks
		<b>Building</b>	<b>Assistance</b>	
			Inspectors & Support Staff	Support Staff only
Phones	14,282	13,669	16,273	7,525
Counter	647	798	835	922
Conferences	44	60	56	72
Files Finaled	692	576	390	87
		<b>Permit</b>	<b>Issuance</b>	
Single Family Residence	75	147	161	183
Multi-Family (Bldgs/Units)	0	4/48	0	4/32
Commercial/Industrial	4	9	6	6
Miscellaneous	94	112	126	151
Electrical	217	256	335	423
Plumbing	61	73	65	80
Mechanical	122	99	131	113
Grand Total	573	748	824	992
		<b>Inspections</b>		
Building/Mechanical	2,838	2,924	3,701	4,075
Electrical/In-Plant	1,135/7	1,169/23	1,306/19	1,321/10
Plumbing	1,317	1,253	1,691	2,086
Total	5,297	5,369	6,717	7,492
		<b>Financial</b>		
Fees	311,707	600,332	515,074	466,918
Valuation	22,252,276	54,195,085	37,231,969	33,065,143

		<b>Building</b>	<b>Activity</b>		
1998	May-98	Jun-98	Jul-98	Aug-98	Sep-98
		<b>Plan</b>	<b>Review</b>		
Submitted	402	557	332	406	319
Completed	352	472	605	386	310
Pending/Residential	96	111	94	99	116
Pending/Commercial	23	28	15	5	8
Grading	14	16	10	8	19
		<b>Plan Review</b>	<b>Average Days</b>		
Residential	5 Weeks	4 Weeks	4 Weeks	4 Weeks	6 Weeks
Commercial	7 Weeks	7 Weeks	7 Weeks	6 Weeks	5 Weeks
		<b>Building</b>	<b>Assistance</b>		
Phones	6,968	7,275	7,309	7,235	6,691
Counter	820	958	1,042	984	990
Conferences	867/meet/contact	710	No longer needed		
Files Finaled	247	349	300	264	236
		<b>Permit</b>	<b>Issuance</b>		
Single Family Residence	159	181	221	147	146
Multi-Family (Bldgs/Units)	0	2/24	16/337	6/57	1/6
Commercial/Industrial	7	6	12	6	6
Miscellaneous	163	206	174	196	164
Electrical	360	401	548	442	392
Plumbing	81	121	126	94	94
Mechanical	146	186	196	213	141
Grand Total	916	1,127	1,630	1,161	950
		<b>Inspections</b>			
Building/Mechanical	3,937	4,698	4,800	4,571	4,378
Electrical/In-Plant	1,283/14	1,575/9	1,688/14	1,660/11	1,601/3
Plumbing	1,744	2,228	2,179	2,017	2,025
Total	6,978	8,510	8,681	8,259	8,007
		<b>Financial</b>			
Fees	517,674	737,319	522,426	510,768	498,083
Valuation	37,211,145	49,342,681	25,341,128	25,976,617	27,811,746

		<b>Building</b>	<b>Activity</b>	
<b>1998</b>	<b>Oct-98</b>	<b>Nov-98</b>	<b>Dec-98</b>	<b>Total Year to Date</b>
		<b>Plan</b>	<b>Review</b>	
<b>Submitted</b>	261	258	240	4,013
<b>Completed</b>	295	216	190	4,099
<b>Pending/Residential</b>	74	82	87	1,069
<b>Pending/Commercial</b>	7	8	10	242
<b>Grading</b>	4	9	2	130
		<b>Plan Review</b>	<b>Average Days</b>	
<b>Residential</b>	2 Weeks	3 Weeks	3 1/2 Weeks	
<b>Commercial</b>	6 Weeks	7 Weeks	7 Weeks	
		<b>Building</b>	<b>Assistance</b>	
<b>Phones</b>	7,291	5,714	6,539	106,771
<b>Counter</b>	913	744	689	10,342
<b>Conferences</b>				1,809
<b>Files Finaled</b>	117	64	295	3,617
		<b>Permit</b>	<b>Issuance</b>	
<b>Single Family Residence</b>	136	83	53	1,692
<b>Multi-Family (Bldgs/Units)</b>	2/6	0	0	35/510
<b>Commercial/Industrial</b>	3	5	6	76
<b>Miscellaneous</b>	114	84	72	1,656
<b>Electrical</b>	406	308	293	4,381
<b>Plumbing</b>	130	92	71	1,088
<b>Mechanical</b>	188	160	196	1,891
<b>Grand Total</b>	985	732	691	11,329
		<b>Inspections</b>		
<b>Building/Mechanical</b>	4,217	3,516	3,310	46,965
<b>Electrical/In-Plant</b>	1,562/9	1,407/10	1,407/13	17,114/142
<b>Plumbing</b>	2,182	1,744	1,500	21,966
<b>Total</b>	7,970	6,677	6,230	86,187
		<b>Financial</b>		
<b>Fees</b>	374,337	378,532	421,148	5,854,318
<b>Valuation</b>	16,855,780	17,960,128	39,406,603	386,650,301

**Washington County Building Services Activity**  
**Calendar Year 1997**

	<b>Building</b>		<b>Activity</b>	
<b>1997</b>	<b>Jan-97</b>	<b>Feb-97</b>	<b>Mar-97</b>	<b>Apr-97</b>
		<b>Plan</b>	<b>Review</b>	
<b>Submitted</b>	287	322	321	429
<b>Completed</b>	323	272	267	361
<b>Pending/Residential</b>	134	58	81	129
<b>Pending/Commercial</b>	21	42	52	38
<b>Grading</b>	6	7	7	19
		<b>Plan Review</b>	<b>Average Days</b>	
<b>Residential</b>	4 Weeks	4 Weeks	3 Weeks	2 1/2 Weeks
<b>Commercial</b>	4 Weeks	6 Weeks	7 Weeks	8 Weeks
		<b>Building</b>	<b>Assistance</b>	
<b>Phones</b>	11,782	11,363	12,497	14,004
<b>Counter</b>	818	892	1,060	1,034
<b>Conferences</b>	35	32	35	46
<b>Files Finaled</b>	613	246	149	110
		<b>Permit</b>	<b>Issuance</b>	
<b>Single Family Residence</b>	187	190	164	167
<b>Multi-Family (Bldgs/Units)</b>	0	12/119	7/28	0
<b>Commercial/Industrial</b>	5	3	5	5
<b>Miscellaneous</b>	87	80	116	152
<b>Electrical</b>	448	445	573	537
<b>Plumbing</b>	97	84	123	140
<b>Mechanical</b>	114	106	138	141
<b>Grand Total</b>	938	920	1,154	1,142
		<b>Inspections</b>		
<b>Building</b>	3,727	4,143	4,714	4,718
<b>Electrical/In-Plant</b>	1,427/25	1,575/16	1,642/24	1,739/20
<b>Plumbing</b>	1,697	1,998	1,975	2,207
<b>Total</b>	6,870	7,732	8,355	8,684
		<b>Financial</b>		
<b>Fees</b>	523,934	488,916	406,399	629,925
<b>Valuation</b>	25,071,472	35,868,375	27,070,863	45,944,096

		<b>Building</b>	<b>Activity</b>		
1997	May-97	Jun-97	Jul-97	Aug-97	Sep-97
		<b>Plan</b>	<b>Review</b>		
Submitted	341	394	346	354	227
Completed	317	314	352	285	357
Pending/Residential	44	66	42	26	35
Pending/Commercial	102	137	61	32	40
Grading	22	19	24	15	10
		<b>Plan Review</b>	<b>Average Days</b>		
Residential	3 Weeks	3 Weeks	3 1/2 Weeks	2 Weeks	2 1/2 Weeks
Commercial	6 Weeks	7 Weeks	7 Weeks	7 Weeks	7 Weeks
		<b>Building</b>	<b>Assistance</b>		
Phones	18,955	18,290	13,276	16,288	23,686
Counter	1,054	1,061	1,028	1,000	921
Conferences	38	51	42	68	47
Files Finaled	140	112	190	304	159
		<b>Permit</b>	<b>Issuance</b>		
Single Family Residence	159	155	156	123	89
Multi-Family (Bldgs/Units)	0	3/9	4/12	3/28	1/28
Commercial/Industrial	15	7	8	11	9
Miscellaneous	167	154	187	173	138
Electrical	567	612	508	412	380
Plumbing	128	152	112	130	124
Mechanical	181	217	148	160	178
Grand Total	1,217	1,309	1,135	1,040	947
		<b>Inspections</b>			
Building	4,812	4,348	4,720	4,128	4,209
Electrical/In-Plant	1,772/30	1,973/23	1,852/22	1,452/21	1,448/25
Plumbing	1,937	1,851	1,932	1,777	1,700
Total	8,551	8,195	8,526	7,378	7,382
		<b>Financial</b>			
Fees	496,597	671,297	572,293	642,201	359,166
Valuation	33,931,341	61,019,484	39,232,279	48,638,564	24,639,810

	<b>Building</b>	<b>Activity</b>		
1997	Oct-97	Nov-97	Dec-97	Total Year to Date
	<b>Plan</b>	<b>Review</b>		
Submitted	204	234	214	3,673
Completed	342	266	325	3,781
Pending/Residential	26	40	62	743
Pending/Commercial	30	34	38	627
Grading	6	11	10	156
	<b>Plan Review</b>	<b>Average Days</b>		
Residential	2 Weeks	4 Weeks	2 Weeks	
Commercial	6 Weeks	7 Weeks	7 Weeks	
	<b>Building</b>	<b>Assistance</b>		
Phones	18,738	16,996	17,054	192,929
Counter	885	750	744	11,247
Conferences	120	89	61	664
Files Finaled	897	431	659	4,010
	<b>Permit</b>	<b>Issuance</b>		
Single Family Residence	88	50	88	1,616
Multi-Family (Bldgs/Units)	17/200	10/58	14/339	71/821
Commercial/Industrial	7	5	12	92
Miscellaneous	127	119	111	1,611
Electrical	347	302	349	5,480
Plumbing	131	99	94	1,414
Mechanical	211	151	170	1,915
Grand Total	1,128	794	1,177	12,901
	<b>Inspections</b>			
Building	4,041	3,011	3,346	49,917
Electrical/In-Plant	1,428/6	1,106/19	1,353/21	18,767/252
Plumbing	1,832	1,175	1,508	21,589
Total	7,307	5,311	6,228	90,519
	<b>Financial</b>			
Fees	252,225	399,637	295,842	5,738,434
Valuation	12,642,990	32,093,196	18,612,260	404,764,730



**Washington County Building Services Activity**

**Calendar Year 1996**

	<b>Building</b>		<b>Activity</b>		
<b>1996</b>	<b>Jan-96</b>	<b>Feb-96</b>	<b>Mar-96</b>	<b>Apr-96</b>	<b>May-96</b>
		<b>Plan</b>	<b>Review</b>		
<b>Submitted</b>	383	257	374	395	398
<b>Completed</b>	238	244	341	284	270
<b>Pending/Residential</b>	64	110	61	111	120
<b>Pending/Commercial</b>	15	16	11	7	20
<b>Grading</b>	10	16	8	12	16
		<b>Plan Review</b>	<b>Average Days</b>		
<b>Residential</b>	3 weeks	2 1/2 weeks	2 1/2 weeks	3 1/2 weeks	4 weeks
<b>Commercial</b>	4 weeks	5 weeks	4 weeks	5 weeks	5 weeks
		<b>Building</b>	<b>Assistance</b>		
<b>Phones</b>	8,913	9,386	10,006	12,788	13,058
<b>Counter</b>	860	840	1,015	1,052	1,018
<b>Conferences</b>	4	28	48	28	36
<b>Files Finaled</b>	32	52	167	152	184
		<b>Permit</b>	<b>Issuance</b>		
<b>Single Family Residence</b>	108	135	198	156	140
<b>Multi-Family (Bldgs/Units)</b>	17	12	8	8	1
<b>Commercial/Industrial</b>	47	26	35	30	62
<b>Miscellaneous</b>	112	103	118	115	139
<b>Electrical</b>	721	572	626	1,130	660
<b>Plumbing</b>	178	202	281	229	226
<b>Mechanical</b>	214	248	281	241	230
<b>Grand Total</b>	1,397	1,298	1,547	1,909	1,458
		<b>Inspections</b>			
<b>Building</b>	3,233	2,863	3,589	3,689	3,933
<b>Electrical/In-Plant</b>	1,685/19	1,380\21	1,581\28	1,582\10	1,822\12
<b>Plumbing</b>	1421	1300	1,741	1,987	1,801
<b>Total</b>	6358	5564	6,939	7,268	7,568
		<b>Financial</b>			
<b>Fees</b>	347,355	391,509	486,819	571,457	539,019
<b>Valuation</b>	31,530,405	30,975,171	50,779,176	35,920,711	32,171,747

		<b>Building</b>	<b>Activity</b>		
1996	Jun-96	Jul-96	Aug-96	Sep-96	Oct-96
		<b>Plan</b>	<b>Review</b>		
<b>Submitted</b>	315	296	340	295	300
<b>Completed</b>	275	292	345	277	438
<b>Pending/Residential</b>	130	140	212	185	160
<b>Pending/Commercial</b>	39	32	46	41	36
<b>Grading</b>	22	23	14	14	10
		<b>Plan Review</b>	<b>Average Days</b>		
<b>Residential</b>	5 weeks	5 weeks	5 weeks	4 weeks	4 weeks
<b>Commercial</b>	5 weeks	4-6 weeks	5 weeks	4 weeks	4 weeks
		<b>Building</b>	<b>Assistance</b>		
<b>Phones</b>	12,393	11,704	12,183	11,970	11,123
<b>Counter</b>	1,180	1,143	902	975	859
<b>Conferences</b>	42	46	38	42	34
<b>Files Finaled</b>	171	210	184	191	522
		<b>Permit</b>	<b>Issuance</b>		
<b>Single Family Residence</b>	201	147	167	132	157
<b>Multi-Family (Bldgs/Units)</b>	1	1	1	11	29
<b>Commercial/Industrial</b>	34	36	42	7	6
<b>Miscellaneous</b>	122	153	104	157	169
<b>Electrical</b>	781	612	662	803	745
<b>Plumbing</b>	173	93	85	97	113
<b>Mechanical</b>	207	170	119	174	221
<b>Grand Total</b>	1,519	1,212	1,180	1,381	1,440
		<b>Inspections</b>			
<b>Building</b>	3,294	3,976	3,548	3,667	4,056
<b>Electrical/In-Plant</b>	1,528\12	1,854\13	1,951\21	1,897\6	2,376\12
<b>Plumbing</b>	1,490	1,727	1,708	1,818	1,995
<b>Total</b>	6,324	7,570	7,228	7,388	8,439
		<b>Financial</b>			
<b>Fees</b>	626,275	769,900	1,168,941	607,120	603,734
<b>Valuation</b>	36,687,195	31,978,937	32,935,676	20,378,673	33,681,221

	<b>Building</b>	<b>Activity</b>	
1996	Nov-96	Dec-96	Total Year to Date
	<b>Plan</b>	<b>Review</b>	
<b>Submitted</b>	241	247	3,841
<b>Completed</b>	239	312	3,555
<b>Pending/Residential</b>	131	101	1,525
<b>Pending/Commercial</b>	37	29	329
<b>Grading</b>	7	2	154
	<b>Plan Review</b>	<b>Average Days</b>	
<b>Residential</b>	4 weeks	3 weeks	
<b>Commercial</b>	4 weeks	4 weeks	
	<b>Building</b>	<b>Assistance</b>	
<b>Phones</b>	10,144	9,418	133,086
<b>Counter</b>	804	784	11,432
<b>Conferences</b>	28	30	404
<b>Files Finaled</b>	362	466	2,693
	<b>Permit</b>	<b>Issuance</b>	
<b>Single Family Residence</b>	95	147	1,783
<b>Multi-Family (Bldgs/Units)</b>	0	1	90
<b>Commercial/Industrial</b>	7	4	336
<b>Miscellaneous</b>	80	74	1,446
<b>Electrical</b>	369	381	8,062
<b>Plumbing</b>	71	89	1,837
<b>Mechanical</b>	153	154	2,412
<b>Grand Total</b>	775	850	15,966
	<b>Inspections</b>		
<b>Building</b>	3,410	3,406	42,664
<b>Electrical/In-Plant</b>	1,743\15	1,617\20	21,016\189
<b>Plumbing</b>	1,418	1,433	19,839
<b>Total</b>	6,586	6,476	83,708
	<b>Financial</b>		
<b>Fees</b>	372,381	879,474	7,363,984
<b>Valuation</b>	19,386,682	74,422,114	430,847,709

**Washington County Building Services Activity**  
**Calendar Year 1995**

	<b>Building</b>		<b>Activity</b>	
<b>1995</b>	<b>Jan-95</b>	<b>Feb-95</b>	<b>Mar-95</b>	<b>Apr-95</b>
		<b>Plan</b>	<b>Review</b>	
<b>Submitted</b>	208	323	450	381
<b>Completed</b>	172	169	362	269
<b>Pending/Residential</b>	52	56	51	61
<b>Pending/Commercial</b>	Not Available	35	27	46
<b>Grading</b>	16	14	17	1
		<b>Plan Review</b>	<b>Average Days</b>	
<b>Residential</b>	14 days	3 weeks	2 weeks	2 weeks
<b>Commercial</b>	7 weeks	42 days	42 days	49 days
		<b>Building</b>	<b>Assistance</b>	
<b>Phones</b>	11300	10501	11201	10980
<b>Counter</b>	1112	956	1300	986
<b>Conferences</b>	8	7	8	16
<b>Files Finaled</b>	238	0	0	0
		<b>Permit</b>	<b>Issuance</b>	
<b>Single Family Residence</b>	128	129	143	145
<b>Multi-Family (Bldgs/Units)</b>	0	0	0	16
<b>Commercial/Industrial</b>	31	33	45	32
<b>Miscellaneous</b>	102	127	168	162
<b>Electrical</b>	823	669	879	785
<b>Plumbing</b>	217	147	238	264
<b>Mechanical</b>	218	162	216	238
<b>Grand Total</b>	1519	1191	1689	1911
		<b>Inspections</b>		
<b>Building</b>	2568	2347	3572	3042
<b>Electrical/In-Plant</b>	1655\110	1489	1900	1750
<b>Plumbing</b>	1071	1066	1704	1466
<b>Total</b>	5294	4902	7356	6258
		<b>Financial</b>		
<b>Fees</b>	297,701	90,454	386,992	402,051
<b>Valuation</b>	27,612,551	25,069,167	43,813,539	39,511,395

		<b>Building</b>	<b>Activity</b>		
1995	May-95	Jun-95	Jul-95	Aug-95	Sep-95
		<b>Plan</b>	<b>Review</b>		
Submitted	390	403	414	342	444
Completed	225	295	299	313	108
Pending/Residential	53	80	48	96	60
Pending/Commercial	50	42	26	41	22
Grading	5	6	8	22	13
		<b>Plan Review</b>	<b>Average Days</b>		
Residential	3 weeks	3 weeks	2 weeks	3 weeks	3 weeks
Commercial	7 weeks	7 weeks	6 weeks	7 weeks	6 weeks
		<b>Building</b>	<b>Assistance</b>		
Phones	11773	11289	11850	8237	8200
Counter	1288	1185	1144	1202	1144
Conferences	12	8	6	7	6
Files Finaled	0	0	0	0	0
		<b>Permit</b>	<b>Issuance</b>		
Single Family Residence	130	134	163	185	122
Multi-Family (Bldgs/Units)	10	18	7	1	1
Commercial/Industrial	38	54	35	40	60
Miscellaneous	154	174	113	197	133
Electrical	961	847	852	718	521
Plumbing	265	258	250	264	233
Mechanical	229	264	228	278	223
Grand Total	1787	1749	1464	1683	1293
		<b>Inspections</b>			
Building	3440	3516	3459	3708	3369
Electrical/In-Plant	1994\15	1810\13	1577\32	1917	1590
Plumbing	1641	1727	1554	1776	1517
Total	7075	7066	6590	7401	6476
		<b>Financial</b>			
Fees	433,694	396,912	455,444	729,665	545,861
Valuation	43,933,029	29,477,764	53,008,819	50,881,846	32,509,983

	<b>Building</b>	<b>Activity</b>		
1995	Oct-95	Nov-95	Dec-95	Total Year to Date
	<b>Plan</b>	<b>Review</b>		
Submitted	370	314	245	4,284
Completed	287	190	393	3,082
Pending/Residential	86	113	23	779
Pending/Commercial	29	38	12	368
Grading	11	9	7	129
	<b>Plan Review</b>	<b>Average Days</b>		
Residential	3 weeks	3 weeks	2 weeks	
Commercial	5 weeks	5 weeks	4 weeks	
	<b>Building</b>	<b>Assistance</b>		
Phones	8305	9034	10039	122,709
Counter	1061	1101	809	13,288
Conferences	5	3	2	88
Files Finaled	0	0	0	238
	<b>Permit</b>	<b>Issuance</b>		
Single Family Residence	140	110	118	1,830
Multi-Family (Bldgs/Units)	1	8	48	110
Commercial/Industrial	33	22	79	502
Miscellaneous	118	105	78	1,631
Electrical	633	614	513	8,815
Plumbing	240	192	220	2,788
Mechanical	274	209	243	2,782
Grand Total	1439	1260	1299	18,284
	<b>Inspections</b>			
Building	3946	3427	2863	39,257
Electrical/In-Plant	1769\11	1658\15	1500\14	20,819
Plumbing	1612	1534	1316	17,984
Total	7327	6634	5693	78,072
	<b>Financial</b>			
Fees	348,513	327,344	453,130	4,867,761
Valuation	31,678,297	49,637,259	41,290,241	468,423,890

**Washington County Building Services Activity**  
**Calendar Year 1994**

	<b>Building</b>		<b>Activity</b>		
<b>1994</b>	<b>Jan-94</b>	<b>Feb-94</b>	<b>Mar-94</b>	<b>Apr-94</b>	<b>May-94</b>
	<b>Plan</b>		<b>Review</b>		
<b>Submitted</b>	345	519	630	643	548
<b>Completed</b>	192	244	295	239	334
<b>Pending/Residential</b>	Not Available				
<b>Pending/Commercial</b>	Not Available				
<b>Grading</b>	Not Available				
	<b>Plan Review</b>		<b>Average Days</b>		
<b>Residential</b>	9 days	3 weeks	2 weeks	2 weeks	3 weeks
<b>Commercial</b>	12 days	3 weeks	2 weeks	2 weeks	3 weeks
	<b>Building</b>		<b>Assistance</b>		
<b>Phones</b>	Not Available				Not Available
<b>Counter</b>	679	1039	1045	1076	1332
<b>Conferences</b>	Not Available				Not Available
<b>Files Finaled</b>	120	120	64	30	Not Available
	<b>Permit</b>		<b>Issuance</b>		
<b>Single Family Residence</b>	94	146	164	171	135
<b>Multi-Family (Bldgs/Units)</b>	4	0	1	0	0
<b>Commercial/Industrial</b>	27	29	27	45	51
<b>Miscellaneous</b>	88	123	171	136	145
<b>Electrical</b>	669	819	797	802	801
<b>Plumbing</b>	147	216	265	265	285
<b>Mechanical</b>	162	228	262	237	275
<b>Grand Total</b>	1191	1561	1687	1656	1692
	<b>Inspections</b>				
<b>Building</b>	2,075	2140	2883	2658	2908
<b>Electrical/In-Plant</b>	1,532	1493\9	1794\20	1778\12	1898\20
<b>Plumbing</b>	1068	1028	1482	1380	1473
<b>Total</b>	4675	4670	6179	5828	6299
	<b>Financial</b>				
<b>Fees</b>	260,234	334,386	516,508	691,556	751,139
<b>Valuation</b>	38,436,309	21,996,101	24,852,180	31,529,243	48,975,856

		<b>Building</b>	<b>Activity</b>		
1994	Jun-94	Jul-94	Aug-94	Sep-94	Oct-94
		<b>Plan</b>	<b>Review</b>		
Submitted	401	471	606	254	
Completed	301	233	269	177	210
Pending/Residential	Not Available				
Pending/Commercial	Not Available				
Grading	Not Available				
		<b>Plan Review</b>	<b>Average Days</b>		
Residential	3 weeks	10 days	12 days	7 days	28 days
Commercial	3 weeks	14 days	10 days	30 days	30 days
		<b>Building</b>	<b>Assistance</b>		
Phones	Not Available			8460	8800
Counter	1120	1020	1080	1200	1095
Conferences	Not Available			8	10
Files Finaled	Not Available				Not Available
		<b>Permit</b>	<b>Issuance</b>		
Single Family Residence	149	110	124	90	83
Multi-Family (Bldgs/Units)	1	9	1	0	7
Commercial/Industrial	52	70	45	33	35
Miscellaneous	16	138	157	176	152
Electrical	824	737	817	702	846
Plumbing	291	225	254	221	191
Mechanical	259	210	236	182	250
Grand Total	1736	1499	1634	1404	1564
		<b>Inspections</b>			
Building	2973	2728	3192	2807	2727
Electrical/In-Plant	1846\17	1780\14	1941	1663\14	1595\4
Plumbing	1474	1398	1499	1424	1214
Total	6310	5920	6632	5894	5540
		<b>Financial</b>			
Fees	699,466	360,241	375,017	308,882	379,708
Valuation	33,393,073	30,037,376	45,531,451	32,294,172	37,567,853



	1994	Nov-94	Dec-94
	Total Year to Date		
<b>Submitted</b>	Not Available		4,417
<b>Completed</b>	189	224	2,907
<b>Pending/Residential</b>	Not Available		Not Available
<b>Pending/Commercial</b>	Not Available		Not Available
<b>Grading</b>	Not Available		Not Available
<b>Residential</b>	14 days	7 days	
<b>Commercial</b>	6 weeks	6 weeks	
<b>Phones</b>	10499	9906	37,665
<b>Counter</b>	918	860	12,464
<b>Conferences</b>	7	7	32
<b>Files Finaled</b>	Not Available		334
<b>Single Family Residence</b>	75	125	1,466
<b>Multi-Family (Bldgs/Units)</b>	4	0	27
<b>Commercial/Industrial</b>	30	41	485
<b>Miscellaneous</b>	126	84	1,656
<b>Electrical</b>	687	713	9,214
<b>Plumbing</b>	153	192	2,705
<b>Mechanical</b>	190	216	2,707
<b>Grand Total</b>	1265	1371	18,260
<b>Building</b>	2747	2329	32,167
<b>Electrical/In-Plant</b>	1573	1557	20,450/142
<b>Plumbing</b>	887	931	15,258
<b>Total</b>	4940	4817	67,704
<b>Fees</b>	263,290	280,500	5,220,927
<b>Valuation</b>	21,241,906	21,932,385	387,787,905

**Washington County Building Services Activity  
Calendar Year 1993**

		<b>Building</b>	<b>Activity</b>		
1993	Jan-93	Feb-93	Mar-93	Apr-93	May-93
		<b>Plan</b>	<b>Review</b>		
<b>Submitted</b>	182	222	237	304	211
<b>Completed</b>	105	188	272	346	157
<b>Pending/Residential</b>	Not Available				
<b>Pending/Commercial</b>	Not Available				
<b>Grading</b>	Not Available				
		<b>Plan Review</b>	<b>Average Days</b>		
<b>Residential</b>	25 days	25 days	33 days	30 days	25 days
<b>Commercial</b>	16 days	10 days	14 days	7 days	14 days
		<b>Permit</b>	<b>Issuance</b>		
<b>Single Family Residential</b>	69	73	133	142	133
<b>Multi-Family (Bldgs/Units)</b>	0	0	0	0	0
<b>Commercial/Industrial</b>	1	14	1	2	3
<b>Miscellaneous</b>	53	73	99	100	76
<b>Electrical</b>	369	430	531	561	589
<b>Plumbing</b>	34	35	69	64	211
<b>Mechanical</b>	65	51	79	76	204
<b>Grand Total</b>	591	676	912	945	1216
		<b>Inspections</b>			
<b>Building</b>	1479	1667	1976	2028	2108
<b>Electrical/In-Plant</b>	920	960	1335	1288\14	1575\11
<b>Plumbing</b>	773	867	986	1208	1118
<b>Total</b>	3172	3494	4297	4538	4812
		<b>Financial</b>			
<b>Fees</b>	236,715	259,905	569,347	483,270	458,541
<b>Valuation</b>	8,589,035	11,832,109	38,901,698	19,570,881	17,496,416

		<b>Building</b>	<b>Activity</b>		
1993	Jun-93	Jul-93	Aug-93	Sep-93	Oct-93
		<b>Plan</b>	<b>Review</b>		
<b>Submitted</b>	302	503	598	417	372
<b>Completed</b>	255	232	408	154	192
<b>Pending/Residential</b>	Not Available				
<b>Pending/Commercial</b>	Not Available				
<b>Grading</b>	Not Available				
		<b>Plan Review</b>	<b>Average Days</b>		
<b>Residential</b>	30 days	45 days	3 days	21 days	28 days
<b>Commercial</b>	16 days	20 days	7 days	14 days	14 days
		<b>Permit</b>	<b>Issuance</b>		
<b>Single Family Residential</b>	149	107	127	112	121
<b>Multi-Family (Bldgs/Units)</b>	0	0	0	2	0
<b>Commercial/Industrial</b>	23	38	35	27	19
<b>Miscellaneous</b>	108	119	158	126	124
<b>Electrical</b>	832	744	712	617	593
<b>Plumbing</b>	227	198	238	206	213
<b>Mechanical</b>	242	200	236	214	237
<b>Grand Total</b>	1581	1406	1506	1304	1307
		<b>Inspections</b>			
<b>Building</b>	2373	2257	2266	2622	2519
<b>Electrical/In-Plant</b>	1194\6	1479\7	1476\4	1272\4	1491\6
<b>Plumbing</b>	1215	1252	1205	852	1267
<b>Total</b>	4788	4995	4951	4750	5283
		<b>Financial</b>			
<b>Fees</b>	547,216	448,109	494,080	422,973	430,026
<b>Valuation</b>	19,582,878	24,865,361	24,721,896	16,481,054	17,284,623

	<b>Building</b>	<b>Activity</b>	
1993	Nov-93	Dec-93	Total Year to Date
	<b>Plan</b>	<b>Review</b>	
<b>Submitted</b>	399	384	4,131
<b>Completed</b>	223	213	2,745
<b>Pending/Residential</b>	Not Available		Not Available
<b>Pending/Commercial</b>	Not Available		Not Available
<b>Grading</b>	Not Available		Not Available
	<b>Plan Review</b>	<b>Average Days</b>	
<b>Residential</b>	3 weeks	2 weeks	
<b>Commercial</b>	2 weeks	2 weeks	
	<b>Permit</b>	<b>Issuance</b>	
<b>Single Family Residential</b>	100	117	1,383
<b>Multi-Family (Bldgs/Units)</b>	0	2	4
<b>Commercial/Industrial</b>	17	31	211
<b>Miscellaneous</b>	112	103	1,251
<b>Electrical</b>	746	692	7,416
<b>Plumbing</b>	183	192	1,870
<b>Mechanical</b>	217	220	2,041
<b>Grand Total</b>	1375	1357	14,176
	<b>Inspections</b>		
<b>Building</b>	2318	2078	25,691
<b>Electrical/In-Plant</b>	1611	1597	16,198/57
<b>Plumbing</b>	1175	1055	12,973
<b>Total</b>	5109	4730	54,919
	<b>Financial</b>		
<b>Fees</b>	439,406	468,689	5,258,277
<b>Valuation</b>	14,915,084	23,188,339	237,429,374

**Washington County Building Services Activity  
Calendar Year 1992**

	<b>Building</b>		<b>Activity</b>		
<b>1992</b>	<b>Jan-92</b>	<b>Feb-92</b>	<b>Mar-92</b>	<b>Apr-92</b>	<b>May-92</b>
		<b>Plan</b>	<b>Review</b>		
<b>Submitted</b>	90	148	156	212	135
<b>Completed</b>	191	292	136	175	150
<b>Pending/Residential</b>	Not Available				
<b>Pending/Commercial</b>	Not Available				
<b>Grading</b>	Not Available				
		<b>Plan Review</b>	<b>Average Days</b>		
<b>Residential</b>	7 weeks	17 days	3 weeks	4 weeks	2 weeks
<b>Commercial</b>	3 weeks	2 weeks	1 week	3 weeks	2 weeks
		<b>Permit</b>	<b>Issuance</b>		
<b>Single Family Residence</b>	70	98	112	106	126
<b>Multi-Family (Bldgs/Units)</b>	0	6	1	0	0
<b>Commercial/Industrial</b>	9	14	41	41	23
<b>Miscellaneous</b>	50	65	77	57	109
<b>Electrical</b>	512	452	626	549	644
<b>Plumbing</b>	131	169	229	208	245
<b>Mechanical</b>	144	159	190	186	221
<b>Grand Total</b>	916	963	1276	1147	1368
		<b>Inspections</b>			
<b>Building</b>	1475	1612	1612	1823	1569
<b>Electrical/In-Plant</b>	1136	1102	1102	1304	1193
<b>Plumbing</b>	711	864	864	1010	1064
<b>Total</b>	3354	3578	3578	4137	3826
		<b>Financial</b>			
<b>Fees</b>	252,505	330,710	450,326	397,752	447,036
<b>Valuation</b>	10,860,032	14,132,764	25,298,769	16,081,570	22,829,467

		<b>Building</b>	<b>Activity</b>		
1992	Jun-92	Jul-92	Aug-92	Sep-92	Oct-92
		<b>Plan</b>	<b>Review</b>		
<b>Submitted</b>	211	146	121	203	200
<b>Completed</b>	222	94	192	200	205
<b>Pending/Residential</b>	Not Available				
<b>Pending/Commercial</b>	Not Available				
<b>Grading</b>	Not Available				
		<b>Plan Review</b>	<b>Average Days</b>		
<b>Residential</b>	3 weeks	3 weeks	2 weeks	14 days	2 weeks
<b>Commercial</b>	3 weeks	1 week	10 days	13 days	9 days
		<b>Permit</b>	<b>Issuance</b>		
<b>Single Family Residence</b>	142	79	75	79	105
<b>Multi-Family (Bldgs/Units)</b>	3	0	6	8	0
<b>Commercial/Industrial</b>	8	3	3	4	0
<b>Miscellaneous</b>	114	99	20	105	80
<b>Electrical</b>	787	612	683	553	591
<b>Plumbing</b>	274	193	203	181	242
<b>Mechanical</b>	245	196	192	200	221
<b>Grand Total</b>	1573	1182	1182	1130	1239
		<b>Inspections</b>			
<b>Building</b>	1748	2062	1870	2011	1433
<b>Electrical/In-Plant</b>	1430	1354	1316	1317	1100
<b>Plumbing</b>	1046	1131	1242	1257	1000
<b>Total</b>	4224	4547	4428	4585	3533
		<b>Financial</b>			
<b>Fees</b>	516,551	312,035	329,553	369,953	348,564
<b>Valuation</b>	30,304,181	32,164,389	15,102,740	17,255,408	14,736,933

	<b>Building</b>	<b>Activity</b>	
<b>1992</b>	<b>Nov-92</b>	<b>Dec-92</b>	<b>Total Year to Date</b>
	<b>Plan</b>	<b>Review</b>	
<b>Submitted</b>	185	140	1,947
<b>Completed</b>	132	146	2,135
<b>Pending/Residential</b>	Not Available		Not Available
<b>Pending/Commercial</b>	Not Available		Not Available
<b>Grading</b>	Not Available		Not Available
	<b>Plan Review</b>	<b>Average Days</b>	
<b>Residential</b>	7 days	10 days	
<b>Commercial</b>	7 days	7 days	
	<b>Permit</b>	<b>Issuance</b>	
<b>Single Family Residence</b>	88	94	1,174
<b>Multi-Family (Bldgs/Units)</b>	5	0	29
<b>Commercial/Industrial</b>	1	3	150
<b>Miscellaneous</b>	73	61	910
<b>Electrical</b>	416	474	6,899
<b>Plumbing</b>	50	145	2,270
<b>Mechanical</b>	100	169	2,223
<b>Grand Total</b>	733	946	13,655
	<b>Inspections</b>		
<b>Building</b>	1222	1475	19,912
<b>Electrical/In-Plant</b>	1006	1076	14,436/32
<b>Plumbing</b>	985	935	12,109
<b>Total</b>	3213	3486	46,489
	<b>Financial</b>		
<b>Fees</b>	321,435	332,228	4,568,762
<b>Valuation</b>	15,036,786	17,238,320	227,507,593

**Washington County Building Services Activity**  
**Calendar Year 1991**

		<b>Building</b>	<b>Activity</b>		
<b>1991</b>	<b>Jan-91</b>	<b>Feb-91</b>	<b>Mar-91</b>	<b>Apr-91</b>	<b>May-91</b>
		<b>Plan</b>	<b>Review</b>		
<b>Submitted</b>	134	Not Available	88	237	183
<b>Completed</b>	203		180	200	173
<b>Pending/Residential</b>	Not Available				
<b>Pending/Commercial</b>	Not Available				
<b>Grading</b>	Not Available				
		<b>Plan Review</b>	<b>Average Days</b>		
<b>Residential</b>	5 days	Not Available	14 days	14 days	13 days
<b>Commercial</b>	14 days	Not Available	14 days	14 days	14 days
		<b>Permit</b>	<b>Issuance</b>		
<b>Single Family Residence</b>	92	Not Available	79	94	113
<b>Multi-Family (Bldgs/Units)</b>	1	Not Available	2	0	2
<b>Commercial/Industrial</b>	22	Not Available	7	5	3
<b>Miscellaneous</b>	84	Not Available	74	81	87
<b>Electrical</b>	483	Not Available	536	554	566
<b>Plumbing</b>	160	Not Available	168	179	199
<b>Mechanical</b>	182	Not Available	128	167	181
<b>Grand Total</b>	1024	Not Available	994	1080	1151
		<b>Inspections</b>			
<b>Building</b>	1859	Not Available	1772	1770	1949
<b>Electrical/In-Plant</b>	1282	Not Available	1215	1127\13	1181\16
<b>Plumbing</b>	1033	Not Available	1026	1094	968
<b>Total</b>	4174	Not Available	4013	4004	4114
		<b>Financial</b>			
<b>Fees</b>	422,984	Not Available	293,673	471,706	351,757
<b>Valuation</b>	12,942,863	Not Available	12,887,290	38,233,192	15,871,558



		<b>Building</b>	<b>Activity</b>		
1991	Jun-91	Jul-91	Aug-91	Sep-91	Oct-91
		<b>Plan</b>	<b>Review</b>		
<b>Submitted</b>	176	201	201	178	128
<b>Completed</b>	192	219	175	241	187
<b>Pending/Residential</b>	Not Available				
<b>Pending/Commercial</b>	Not Available				
<b>Grading</b>	Not Available				
		<b>Plan Review</b>	<b>Average Days</b>		
<b>Residential</b>	14 days	17 days	22 days	8 days	10 days
<b>Commercial</b>	14 days	17 days	28 days	21 days	3 weeks
		<b>Permit</b>	<b>Issuance</b>		
<b>Single Family Residence</b>	78	114	87	76	108
<b>Multi-Family (Bldgs/Units)</b>	0	0	8	0	0
<b>Commercial/Industrial</b>	0	4	7	6	5
<b>Miscellaneous</b>	82	105	116	110	129
<b>Electrical</b>	521	564	558	564	552
<b>Plumbing</b>	159	223	213	186	216
<b>Mechanical</b>	140	202	202	197	241
<b>Grand Total</b>	980	1212	1191	1139	1251
		<b>Inspections</b>			
<b>Building</b>	1674	1643	1787	1667	1917
<b>Electrical/In-Plant</b>	1050\4	1187\15	1108\6	1140\4	1338\6
<b>Plumbing</b>	1019	982	1154	948	1044
<b>Total</b>	3747	3827	4055	3759	4305
		<b>Financial</b>			
<b>Fees</b>	317,970	567,168	459,546	314,093	392,559
<b>Valuation</b>	11,153,651	17,695,144	30,597,765	13,770,533	16,679,115

	<b>Building</b>	<b>Activity</b>	
<b>1991</b>	<b>Nov-91</b>	<b>Dec-91</b>	<b>Total Year to Date</b>
	<b>Plan</b>	<b>Review</b>	
<b>Submitted</b>	127	449	2,102
<b>Completed</b>	123	137	2,030
<b>Pending/Residential</b>	Not Available		Not Available
<b>Pending/Commercial</b>	Not Available		Not Available
<b>Grading</b>	Not Available		Not Available
	<b>Plan Review</b>	<b>Average Days</b>	
<b>Residential</b>	7 days	3 1/2 weeks	
<b>Commercial</b>	14 days	2 1/2 weeks	
	<b>Permit</b>	<b>Issuance</b>	
<b>Single Family Residence</b>	57	44	942
<b>Multi-Family (Bldgs/Units)</b>	9	0	22
<b>Commercial/Industrial</b>	3	3	65
<b>Miscellaneous</b>	50	57	975
<b>Electrical</b>	384	369	5,651
<b>Plumbing</b>	136	119	1,958
<b>Mechanical</b>	158	130	1,928
<b>Grand Total</b>	797	722	11,541
	<b>Inspections</b>		
<b>Building</b>	1598	1555	19,191
<b>Electrical/In-Plant</b>	1069\7	1109	12,877
<b>Plumbing</b>	812	834	10,914
<b>Total</b>	3486	3498	42,982
	<b>Financial</b>		
<b>Fees</b>	253,779	632,791	4,478,026
<b>Valuation</b>	10,803,874	37,701,842	218,336,827

**Washington County Building Services Activity**  
**Calendar Year 1990**

	<b>Building Activity</b>				
1990	Jan-90	Feb-90	Mar-90	Apr-90	May-90
			<b>Plan Review</b>		
<b>Submitted</b>	94	N/A	145	N/A	N/A
<b>Completed</b>	Not Available	N/A	N/A	N/A	N/A
<b>Pending/Residential</b>					
<b>Pending/Commercial</b>					
<b>Grading</b>	0	2	3	2	1
			<b>Plan Review</b>		<b>Average Days</b>
<b>Residential</b>	Not Available	N/A	N/A	N/A	N/A
<b>Commercial</b>	N/A	N/A	N/A	N/A	N/A
			<b>Permit</b>		<b>Issuance</b>
<b>Single Family Residence</b>	79	67	156	158	141
<b>Multi-Family (Bldgs/Units)</b>	15/106	12/246	24/270	2/10	1/14
<b>Commercial/Industrial</b>	24	13	24	33	22
<b>Miscellaneous</b>	132	77	176	217	176
<b>Electrical</b>	525	376	610	635	635
<b>Plumbing</b>	149	117	253	251	246
<b>Mechanical</b>	154	67	251	232	203
<b>Grand Total</b>	1,184	975	1,764	1,538	1,438
			<b>Inspections</b>		
<b>Building</b>	Not Available	N/A	N/A	N/A	N/A
<b>Electrical/In-Plant</b>	N/A	N/A	N/A	N/A	N/A
<b>Plumbing</b>	N/A	N/A	N/A	N/A	N/A
<b>Total</b>	N/A	N/A	N/A	N/A	N/A
			<b>Financial</b>		
<b>Fees</b>	201,810	212,589	321,396	321,177	287,683
<b>Valuation</b>	15,814,937	23,035,171	42,280,902	19,815,077	18,968,273

		<b>Building</b>	<b>Activity</b>		
1990	Jun-90	Jul-90	Aug-90	Sep-90	Oct-90
		<b>Plan</b>	<b>Review</b>		
Submitted	N/A	N/A	N/A	N/A	31
Completed	N/A	N/A	N/A	N/A	N/A
Pending/Residential					
Pending/Commercial					
Grading	2	5	1	5	N/A
		<b>Plan Review</b>	<b>Average Days</b>		
Residential	Not Available	N/A	N/A	N/A	N/A
Commercial	N/A	N/A	N/A	N/A	N/A
		<b>Permit</b>	<b>Issuance</b>		
Single Family Residence	162	145	147	89	130
Multi-Family (Bldgs/Units)	8/84	2/14	17/216	17/206	4/44
Commercial/Industrial	26	22	30	24	15
Miscellaneous	201	183	206	168	91
Electrical	575	698	661	537	787
Plumbing	285	263	291	210	249
Mechanical	251	222	278	215	273
Grand Total	1,592	1,549	1,846	1,466	1,593
		<b>Inspections</b>			
Building	Not Available	N/A	N/A	N/A	2,472
Electrical/In-Plant	N/A	N/A	N/A	N/A	1,395
Plumbing	N/A	N/A	N/A	N/A	1,478
Total	N/A	N/A	N/A	N/A	5,345
		<b>Financial</b>			
Fees	356,647	276,590	366,502	249,258	1,424,152
Valuation	25,658,027	22,617,810	33,149,774	25,013,696	21,719,704

	<b>Building</b>	<b>Activity</b>	
<b>1990</b>	<b>Nov-90</b>	<b>Dec-90</b>	<b>Total Year to Date</b>
	<b>Plan</b>	<b>Review</b>	
<b>Submitted</b>	54	43	367
<b>Completed</b>	116	163	279
<b>Pending/Residential</b>			
<b>Pending/Commercial</b>			
<b>Grading</b>	Not Available	N/A	21
	<b>Plan Review</b>	<b>Average Days</b>	
<b>Residential</b>	3 Weeks	6 Days	
<b>Commercial</b>	4 Weeks	6 Weeks	
	<b>Permit</b>	<b>Issuance</b>	
<b>Single Family Residence</b>	74	50	1,398
<b>Multi-Family (Bldgs/Units)</b>	3	2	107/1,210
<b>Commercial/Industrial</b>	18	28	279
<b>Miscellaneous</b>	83	43	1,753
<b>Electrical</b>	574	353	6,966
<b>Plumbing</b>	152	103	2,569
<b>Mechanical</b>	189	124	2,459
<b>Grand Total</b>	1,093	703	16,741
	<b>Inspections</b>		
<b>Building</b>	2,018	1,439	5,929
<b>Electrical/In-Plant</b>	1,376	1,056/3	3,827/3
<b>Plumbing</b>	1,085	784	3,347
<b>Total</b>	4,479	3,282	13,106
	<b>Financial</b>		
<b>Fees</b>	516,908	292,321	4,827,033
<b>Valuation</b>	14,192,563	7,778,888	270,044,822

**Washington County Building Services Activity**  
**Calendar Year 1989**

	<b>Building Activity</b>				
<b>1989</b>	<b>Jan-89</b>	<b>Feb-89</b>	<b>Mar-89</b>	<b>Apr-89</b>	<b>May-89</b>
			<b>Plan Review</b>		
<b>Submitted</b>	N/A	N/A	N/A	N/A	N/A
<b>Completed</b>	N/A	N/A	N/A	N/A	N/A
<b>Pending/Residential</b>	26	25	33	38	30
<b>Pending/Commercial</b>	17	8	10	13	10
<b>Grading</b>	3	2	0	3	2
			<b>Plan Review</b>		<b>Average Days</b>
<b>Residential</b>	N/A	N/A	N/A	N/A	N/A
<b>Commercial</b>	N/A	N/A	N/A	N/A	N/A
			<b>Permit</b>		<b>Issuance</b>
<b>Single Family Residence</b>	75	65	70	89	112
<b>Multi-Family (Bldgs/Units)</b>	4/24	0	0	0	0
<b>Commercial/Industrial</b>	35	26	24	23	26
<b>Miscellaneous</b>	100	103	106	136	160
<b>Electrical</b>	388	447	504	568	552
<b>Plumbing</b>	143	120	133	161	184
<b>Mechanical</b>	173	127	130	151	188
<b>Grand Total</b>	942	888	967	1,128	1,222
			<b>Inspections</b>		
<b>Building</b>	1,420	1,126	1,069	1,378	1,515
<b>Electrical/In-Plant</b>	1,052	959	1,219	N/A	1,059
<b>Plumbing</b>	600	410	613	N/A	739
<b>Total</b>	3,072	2,495	2,901	N/A	3,313
			<b>Financial</b>		
<b>Fees</b>	237,406	145,818	134,523	171,744	191,789
<b>Valuation</b>	29,795,930	12,441,717	9,237,012	12,933,828	14,479,331

		<b>Building</b>	<b>Activity</b>		
<b>1989</b>	<b>Jun-89</b>	<b>Jul-89</b>	<b>Aug-89</b>	<b>Sep-89</b>	<b>Oct-89</b>
		<b>Plan</b>	<b>Review</b>		
<b>Submitted</b>	N/A	N/A	N/A	N/A	N/A
<b>Completed</b>	N/A	N/A	N/A	N/A	N/A
<b>Pending/Residential</b>	30	41			32
<b>Pending/Commercial</b>	41	60			32
<b>Grading</b>	2	5	5	2	7
		<b>Plan Review</b>	<b>Average Days</b>		
<b>Residential</b>	N/A	N/A	N/A	N/A	N/A
<b>Commercial</b>	N/A	N/A	N/A	N/A	N/A
		<b>Permit</b>	<b>Issuance</b>		
<b>Single Family Residence</b>	92	90	99	112	68
<b>Multi-Family (Bldgs/Units)</b>	20/274	0	0	14/243	26/346
<b>Commercial/Industrial</b>	22	25	21	29	33
<b>Miscellaneous</b>	137	130	112	141	140
<b>Electrical</b>	534	510	358	543	537
<b>Plumbing</b>	185	166	48	215	191
<b>Mechanical</b>	164	165	92	232	211
<b>Grand Total</b>	1,428	1,086	730	1,529	1,552
		<b>Inspections</b>			
<b>Building</b>	1,671	1,553	N/A	N/A	N/A
<b>Electrical/In-Plant</b>	1,226	1,331	N/A	N/A	N/A
<b>Plumbing</b>	739	694	N/A	N/A	N/A
<b>Total</b>	3,636	3,578	1,932	1,795	N/A
		<b>Financial</b>			
<b>Fees</b>	237,283	178,902	329,427	262,242	259,715
<b>Valuation</b>	21,568,164	12,207,112	21,853,965	26,079,823	30,387,499

	Building	Activity		
1989	Nov-89	Dec-89	Total Year to Date	
	Plan	Review		
Submitted	N/A	N/A	N/A	
Completed	N/A	N/A	N/A	
Pending/Residential			255	
Pending/Commercial			191	
Grading	4		35	
	<b>Plan Review</b>	<b>Average Days</b>		
Residential	N/A	N/A	N/A	
Commercial	N/A	N/A	N/A	
	<b>Permit</b>	<b>Issuance</b>		
Single Family Residence	92	83	1,047	
Multi-Family (Bldgs/Units)	49/345	59/340	172/1,572	
Commercial/Industrial	26	37	327	
Miscellaneous	127	103	1,495	
Electrical	499	472	5,912	
Plumbing	202	185	1,933	
Mechanical	233	213	2,079	
Grand Total	1,573	1,492	14,537	
	<b>Inspections</b>			
Building	N/A	N/A	9,732	
Electrical/In-Plant	N/A	N/A	6,846	
Plumbing	N/A	N/A	3,795	
Total	N/A	N/A	22,722	
	<b>Financial</b>			
Fees	312,488	259,765	2,721,102	
Valuation	32,618,085	29,740,141	253,342,607	



**Washington County Building Services Activity**  
**Calendar Year 1988**

	<b>Building Activity</b>				
1988	Jan-88	Feb-88	Mar-88	Apr-88	May-88
			<b>Plan Review</b>		
<b>Submitted</b>	N/A	N/A	N/A	N/A	N/A
<b>Completed</b>	N/A	N/A	N/A	N/A	N/A
<b>Pending/Residential</b>	28	35	20	30	29
<b>Pending/Commercial</b>	3	6	7	8	14
<b>Grading</b>	Not tracked				
			<b>Plan Review</b>		<b>Average Days</b>
<b>Residential</b>	N/A	N/A	N/A	N/A	N/A
<b>Commercial</b>	N/A	N/A	N/A	N/A	N/A
			<b>Permit</b>		<b>Issuance</b>
<b>Single Family Residence</b>	42	78	85	85	92
<b>Multi-Family (Bldgs/Units)</b>	0	0	0	12/48	0
<b>Commercial/Industrial</b>	6	20	21	23	20
<b>Miscellaneous</b>	63	89	116	116	133
<b>Electrical</b>	497	741	956	600	572
<b>Plumbing</b>	77	115	137	168	181
<b>Mechanical</b>	107	138	157	167	163
<b>Grand Total</b>	792	1,181	1,472	1,219	1,160
			<b>Inspections</b>		
<b>Building</b>	1,225	1,264	1,497	1,492	1,515
<b>Electrical/In-Plant</b>	Not tracked				
<b>Plumbing</b>	Not tracked				
<b>Total</b>	1,225	1,264	1,497	1,492	1,515
			<b>Financial</b>		
<b>Fees</b>	78,593	131,089	142,113	153,862	151,454
<b>Valuation</b>	6,325,580	11,002,075	9,678,765	11,243,510	11,881,345

		<b>Building</b>	<b>Activity</b>		
1988	Jun-88	Jul-88	Aug-88	Sep-88	Oct-88
		<b>Plan</b>	<b>Review</b>		
<b>Submitted</b>	N/A	N/A	N/A	N/A	N/A
<b>Completed</b>	N/A	N/A	N/A	N/A	N/A
<b>Pending/Residential</b>	44	20	22	37	36
<b>Pending/Commercial</b>	4	20	13	14	18
<b>Grading</b>	Not tracked				2
		<b>Plan Review</b>	<b>Average</b>	<b>Days</b>	
<b>Residential</b>	N/A	N/A	N/A	N/A	N/A
<b>Commercial</b>	N/A	N/A	N/A	N/A	N/A
		<b>Permit</b>	<b>Issuance</b>		
<b>Single Family Residence</b>	91	76	121	85	92
<b>Multi-Family (Bldgs/Units)</b>	0	1/3	0	0	5/40
<b>Commercial/Industrial</b>	24	29	30	35	28
<b>Miscellaneous</b>	140	106	170	120	140
<b>Electrical</b>	846	501	531	462	564
<b>Plumbing</b>	187	168	227	178	179
<b>Mechanical</b>	155	154	203	211	216
<b>Grand Total</b>	1,443	1,036	1,281	1,091	1,264
		<b>Inspections</b>			
<b>Building</b>	1,589	1,451	1,686	1,585	1,421
<b>Electrical/In-Plant</b>	1,214	1,144	1,206	1,286	1,230
<b>Plumbing</b>	737	613	857	844	689
<b>Total</b>	3,540	3,208	3,749	3,715	3,340
		<b>Financial</b>			
<b>Fees</b>	163,135	148,163	208,891	141,480	182,294
<b>Valuation</b>	11,810,850	10,260,318	18,456,138	9,165,591	15,398,116

	<b>Building</b>	<b>Activity</b>	
<b>1988</b>	<b>Nov-88</b>	<b>Dec-88</b>	<b>Total Year to Date</b>
	<b>Plan</b>	<b>Review</b>	
<b>Submitted</b>	N/A	N/A	N/A
<b>Completed</b>	N/A	N/A	N/A
<b>Pending/Residential</b>	10	11	322
<b>Pending/Commercial</b>	9	20	136
<b>Grading</b>	4	0	6
	<b>Plan Review</b>	<b>Average Days</b>	
<b>Residential</b>	N/A	N/A	N/A
<b>Commercial</b>	N/A	N/A	N/A
	<b>Permit</b>	<b>Issuance</b>	
<b>Single Family Residence</b>	64	67	978
<b>Multi-Family (Bldgs/Units)</b>	0	1/8	19/99
<b>Commercial/Industrial</b>	23	26	285
<b>Miscellaneous</b>	103	90	1,386
<b>Electrical</b>	466	396	7,132
<b>Plumbing</b>	124	129	1,870
<b>Mechanical</b>	157	163	1,991
<b>Grand Total</b>	937	880	13,756
	<b>Inspections</b>		
<b>Building</b>	1,632	1,558	17,915
<b>Electrical/In-Plant</b>	1,292	1,142	8,514
<b>Plumbing</b>	654	555	4,949
<b>Total</b>	3,578	3,255	31,378
	<b>Financial</b>		
<b>Fees</b>	128,176	131,330	1,760,580
<b>Valuation</b>	8,560,772	8,697,055	132,480,115

**Washington County Building Services Activity  
Calendar Year 1987**

			<b>Building Activity</b>			
<b>1987</b>	<b>Jan-87</b>	<b>Feb-87</b>	<b>Mar-87</b>	<b>Apr-87</b>	<b>May-87</b>	
			<b>Plan Review</b>			
<b>Submitted</b>	N/A	N/A	N/A	N/A	N/A	
<b>Completed</b>	N/A	N/A	N/A	N/A	N/A	
<b>Pending/Residential</b>	11	34	9	35	21	
<b>Pending/Commercial</b>	15	14	33	24	34	
<b>Grading</b>	Not tracked					
			<b>Plan Review</b>		<b>Average Days</b>	
<b>Residential</b>	N/A	N/A	N/A	N/A	N/A	
<b>Commercial</b>	N/A	N/A	N/A	N/A	N/A	
			<b>Permit</b>		<b>Issuance</b>	
<b>Single Family Residence</b>	48	60	77	74	95	
<b>Multi-Family (Bldg/Units)</b>	0	0	2/4	0	0	
<b>Commercial/Industrial</b>	27	29	31	20	28	
<b>Miscellaneous</b>	80	82	105	125	133	
<b>Electrical</b>	386	453	585	510	717	
<b>Plumbing</b>	81	108	136	129	160	
<b>Mechanical</b>	129	146	146	129	153	
<b>Grand Total</b>	<b>751</b>	<b>878</b>	<b>1,086</b>	<b>987</b>	<b>1,286</b>	
			<b>Inspections</b>			
<b>Building</b>	1,087	1,231	1,034	1,019	1,254	
<b>Electrical/In-Plant</b>	Not tracked					
<b>Plumbing</b>	Not tracked					
<b>Total</b>						
			<b>Financial</b>			
<b>Fees</b>	82,727	120,425	119,065	104,717	148,185	
<b>Valuation</b>	8,036,334	7,157,952	10,354,239	8,263,654	12,553,022	

		<b>Building</b>	<b>Activity</b>		
1987	Jun-87	Jul-87	Aug-87	Sep-87	Oct-87
		<b>Plan Review</b>			
<b>Submitted</b>	N/A	N/A	N/A	N/A	N/A
<b>Completed</b>	N/A	N/A	N/A	N/A	N/A
<b>Pending/Residential</b>	31	39	32	28	23
<b>Pending/Commercial</b>	34	22	11	16	5
<b>Grading</b>	Not tracked				
		<b>Plan Review</b>	<b>Average</b>	<b>Days</b>	
<b>Residential</b>	N/A	N/A	N/A	N/A	N/A
<b>Commercial</b>	N/A	N/A	N/A	N/A	N/A
		<b>Permit</b>	<b>Issuance</b>		
<b>Single Family Residence</b>	103	127	92	74	60
<b>Multi-Family (Bldg/Units)</b>	0	1/2	19/192	3/129	0
<b>Commercial/Industrial</b>	25	43	33	31	29
<b>Miscellaneous</b>	124	102	133	115	102
<b>Electrical</b>	584	544	543	558	563
<b>Plumbing</b>	175	165	195	156	142
<b>Mechanical</b>	186	159	195	174	166
<b>Grand Total</b>	1,197	1,143	1,402	1,240	1,062
		<b>Inspections</b>			
<b>Building</b>	1,364	1,273	1,355	1,408	1,460
<b>Electrical/In-Plant</b>	Not tracked				
<b>Plumbing</b>	Not tracked				
<b>Total</b>					
		<b>Financial</b>			
<b>Fees</b>	160,108	121,375	209,719	142,369	128,017
<b>Valuation</b>	15,223,128	11,208,990	21,630,092	14,918,974	15,194,624

		<b>Building</b>	<b>Activity</b>
<b>1987</b>	<b>Nov-87</b>	<b>Dec-87</b>	<b>Total Year to Date</b>
		<b>Plan</b>	<b>Review</b>
<b>Submitted</b>	N/A	N/A	N/A
<b>Completed</b>	N/A	N/A	N/A
<b>Pending/Residential</b>	22	13	298
<b>Pending/Commercial</b>	9	0	217
<b>Grading</b>			
		<b>Plan Review</b>	<b>Average Days</b>
<b>Residential</b>	N/A	N/A	N/A
<b>Commercial</b>	N/A	N/A	N/A
		<b>Permit</b>	<b>Issuance</b>
<b>Single Family Residence</b>	53	39	902
<b>Multi-Family (Bldg/Units)</b>	0	0	25/327
<b>Commercial/Industrial</b>	18	25	339
<b>Miscellaneous</b>	81	64	1,246
<b>Electrical</b>	443	377	6,263
<b>Plumbing</b>	98	93	1,638
<b>Mechanical</b>	172	131	1,886
<b>Grand Total</b>	865	729	12,626
		<b>Inspections</b>	
<b>Building</b>	1,695	1,312	15,492
<b>Electrical/In-Plant</b>	Not tracked		Not tracked
<b>Plumbing</b>	Not tracked		Not tracked
<b>Total</b>			
		<b>Financial</b>	
<b>Fees</b>	88,906	83,826	1,509,439
<b>Valuation</b>	7,912,783	8,805,349	141,259,141

**Washington County Building Services Activity**  
**Calendar Year 1986**

		Building Activity					
1986	Jan-86	Feb-86	Mar-86	Apr-86	May-86	Jun-86	
		Plan Review					
Submitted	N/A	N/A	N/A	N/A	N/A	N/A	
Completed	N/A	N/A	N/A	N/A	N/A	N/A	
Pending/Res	14	N/A	8	36	35	23	
Pending/Com	19	N/A	10	14	23	18	
Grading	Not Tracked						
		Plan Review			Average Days		
Residential	N/A	N/A	N/A	N/A	N/A	N/A	
Commercial	N/A	N/A	N/A	N/A	N/A	N/A	
		Permit			Issuance		
Single Family Res	63	42	54	72	69	91	
Multi(Bldgs/Units)	0	16/192	36/288	0	0	0	
Comm/Industrial	21	30	16	23	36	27	
Miscellaneous	164	100	110	119	126	132	
Electrical	N/A	N/A	N/A	N/A	N/A	N/A	
Plumbing	N/A	N/A	N/A	N/A	N/A	N/A	
Mechanical	N/A	N/A	N/A	N/A	N/A	N/A	
Grand Total	248	380	504	214	231	250	
		Inspections					
Building	1,419	1,153	1,732	1,373	1,280	1,278	
Elect/In-Plant	Not tracked						
Plumbing	Not tracked						
Total							
		Financial					
Fees	53,366	72,532	71,448	70,426	60,248	63,741	
Valuation	7,418,981	12,212,446	17,833,406	9,264,645	7,292,519	8,946,967	

Jul-86	Aug-86	Sep-86	Oct-86	Nov-86	Dec-86	Total Year to Date	
N/A	N/A	N/A	N/A	N/A	N/A	N/A	N/A
N/A	N/A	N/A	N/A	N/A	N/A	N/A	N/A
27	52	48	11	21	11	286	
23	8	23	17	26	6	187	
N/A	N/A	N/A	N/A	N/A	N/A	N/A	N/A
N/A	N/A	N/A	N/A	N/A	N/A	N/A	N/A
84	63	52	84	40	48	762	
4/23	5/47	0	2/4	0	0	63/554	
38	42	26	34	28	30	351	
136	130	123	141	84	75	1,440	
579	575	519	547	456	433	8,319	
181	149	133	186	89	91	829	
172	144	159	204	150	132	961	
1,217	1,155	1,012	1,202	847	809	8,069	
N/A	1,358	1,677	1,553	1,405	1,267	15,495	
172,314	142,920	94,628	160,108	96,419	75,548	1,133,698	
17,066,510	11,831,266	6,896,726	16,068,642	9,265,239	5,495,955	129,593,302	



**Washington County Building Services Activity**  
**Calendar Year 1985**

	<b>Building Activity</b>				
1985	Jan-85	Feb-85	Mar-85	Apr-85	May-85
		<b>Plan Review</b>			
<b>Submitted</b>	N/A	N/A	N/A	N/A	N/A
<b>Completed</b>	N/A	N/A	N/A	N/A	N/A
<b>Pending/Res</b>	32	36	21	27	27
<b>Pending/Com</b>	5	12	16	14	11
<b>Grading</b>	Not Tracked				
		<b>Plan Review</b>		<b>Average Days</b>	
<b>Residential</b>	N/A	N/A	N/A	N/A	N/A
<b>Commercial</b>	N/A	N/A	N/A	N/A	N/A
		<b>Permit</b>		<b>Issuance</b>	
<b>Single Family Res</b>	44	72	119	70	97
<b>Multi(Bldgs/Units)</b>	0	0	0	27/222	0
<b>Comm/Industrial</b>	43	29	39	40	38
<b>Miscellaneous</b>	131	128	193	149	148
<b>Electrical</b>	N/A	N/A	N/A	N/A	N/A
<b>Plumbing</b>	N/A	N/A	N/A	N/A	N/A
<b>Mechanical</b>	N/A	N/A	N/A	N/A	N/A
<b>Grand Total</b>	218	229	351	508	283
		<b>Inspections</b>			
<b>Building</b>	N/A	N/A	N/A	N/A	N/A
<b>Electrical/In-Plant</b>	N/A	N/A	N/A	N/A	N/A
<b>Plumbing</b>	N/A	N/A	N/A	N/A	N/A
<b>Total</b>					
		<b>Financial</b>			
<b>Fees</b>	50,753	98,193	88,428	91,108	73,831
<b>Valuation</b>	7,177,064	6,891,444	11,837,221	13,152,513	9,680,631

	Building	Activity			
1985	Jun-85	Jul-85	Aug-85	Sep-85	Oct-85
Submitted	N/A	N/A	N/A	N/A	N/A
Completed	N/A	N/A	N/A	N/A	N/A
Pending/Res	11	9	45	17	10
Pending/Com	11	22	15	9	10
Grading		Not Tracked			
	<b>Plan</b>	<b>Review</b>	<b>Average</b>	<b>Days</b>	
Residential	N/A	N/A	N/A	N/A	N/A
Commercial	N/A	N/A	N/A	N/A	N/A
	<b>Permit</b>	<b>Issuance</b>			
Single Family Res	76	70	63	71	86
Multi(Bldgs/Units)	22/360	12/258	26/186	18/96	2/4
Comm/Industrial	28	39	46	53	47
Miscellaneous	165	134	180	173	232
Electrical	N/A	N/A	N/A	N/A	N/A
Plumbing	N/A	N/A	N/A	N/A	N/A
Mechanical	N/A	N/A	N/A	N/A	N/A
Grand Total	651	513	501	411	371
	<b>Inspections</b>				
Building	N/A	N/A	N/A	N/A	N/A
Electrical/In-Plant	N/A	N/A	N/A	N/A	N/A
Plumbing	N/A	N/A	N/A	N/A	N/A
Total					
	<b>Financial</b>				
Fees	140,868	124,761	99,814	84,342	71,431
Valuation	26,110,081	22,502,441	15,183,889	12,030,832	8,707,642

	Building	Activity	
1985	Nov-85	Dec-85	Total Year to Date
Submitted	N/A	N/A	N/A
Completed	N/A	N/A	N/A
Pending/Res	8	12	255
Pending/Com	16	18	159
Grading			Not Tracked
	Plan	Review	Average Days
Residential	N/A	N/A	N/A
Commercial	N/A	N/A	N/A
	Permit	Issuance	
Single Family Res	43	31	842
Multi(Bldgs/Units)	1/3	0	108/1,129
Comm/Industrial	24	20	446
Miscellaneous	172	129	1,934
Electrical	N/A	N/A	
Plumbing	N/A	N/A	
Mechanical	N/A	N/A	
Grand Total	243	180	4,459
	Inspections		
Building	N/A	N/A	N/A
Electrical/In-Plant	N/A	N/A	N/A
Plumbing	N/A	N/A	N/A
Total			
	Financial		
Fees	40,459	98,403	1,062,391
Valuation	5,369,894	20,133,315	158,776,967