



# Springville Road Phase 4

PCC Entrance to Joss Avenue

**BIKE AND PEDESTRIAN FACILITY  
ALTERNATIVES**

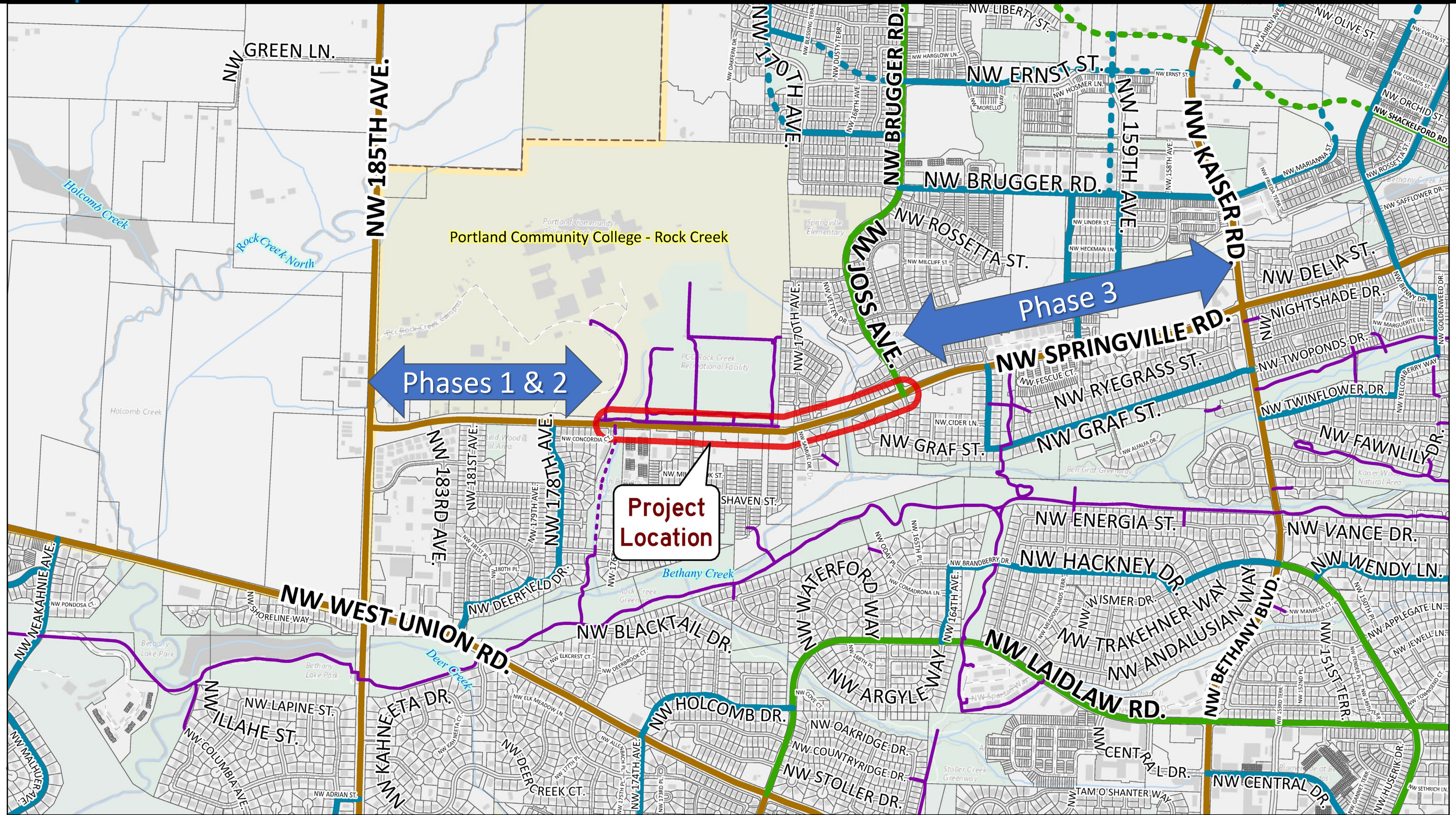
| Dec. 13, 2021

Land Use & Transportation

[www.co.washington.or.us](http://www.co.washington.or.us)



# Phase 4 project area overview



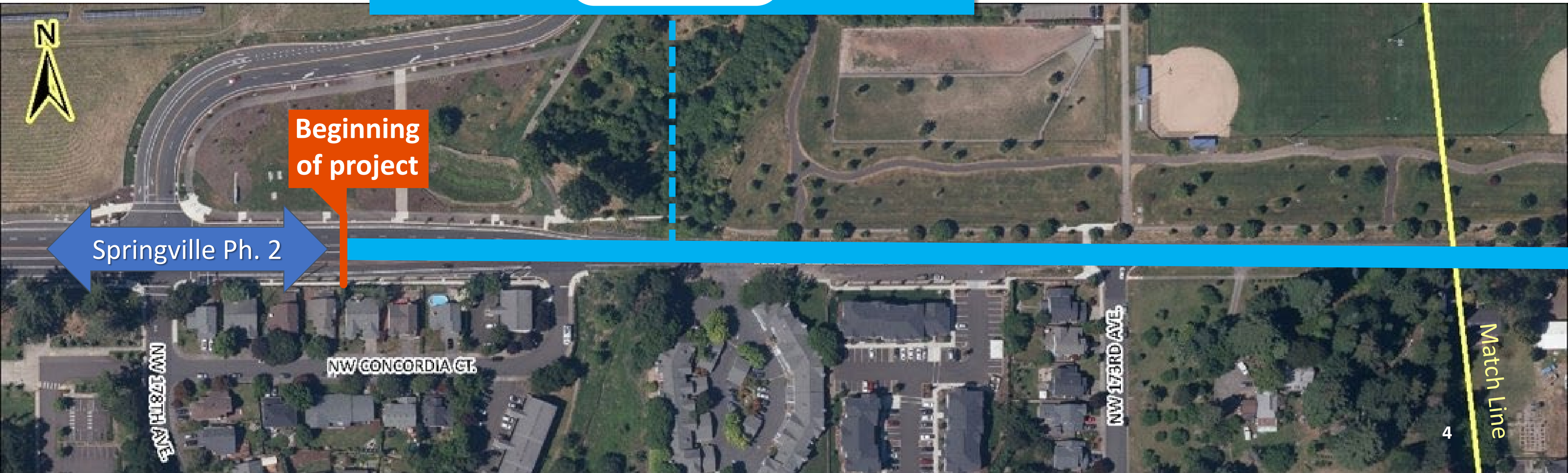
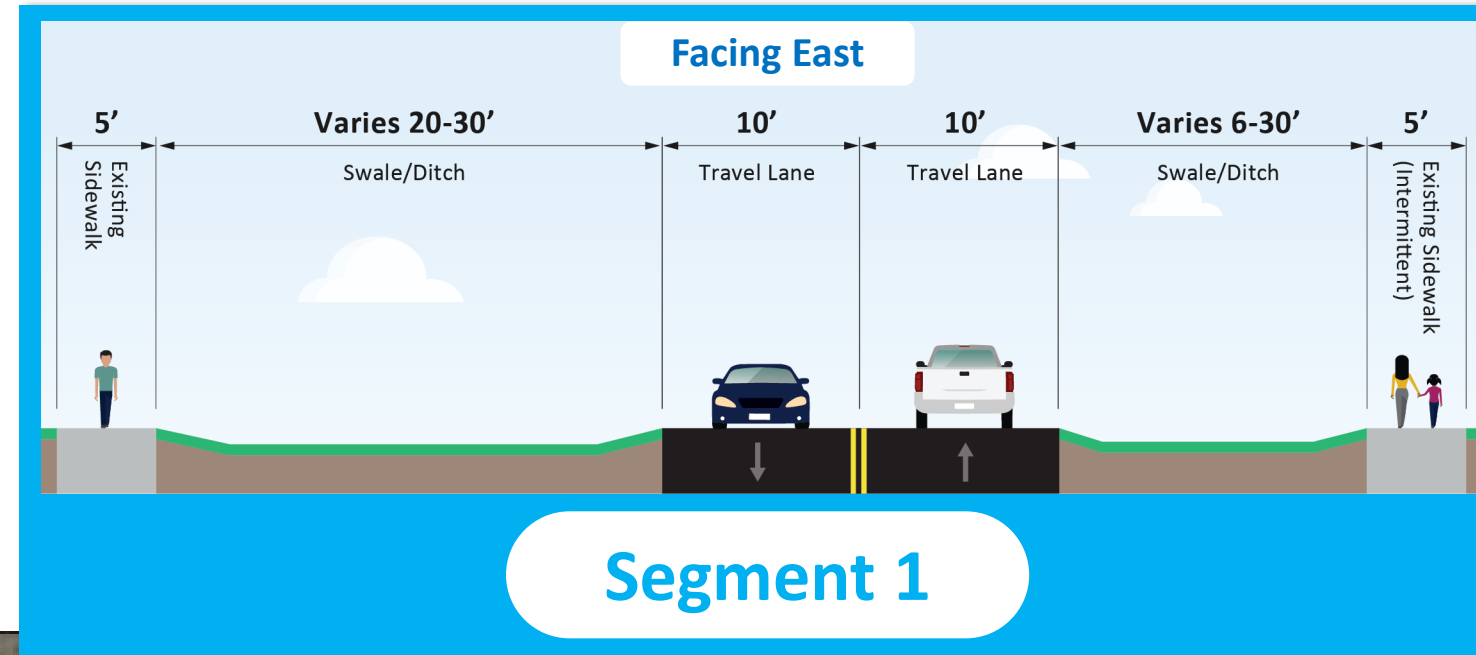


# Traffic data

	Current	Future (2035)
Traffic volume (AADT)	7,320	10,250
% Truck traffic	6.6%	6.6%
Bus service	Every 30 minutes	Subject to change by TriMet

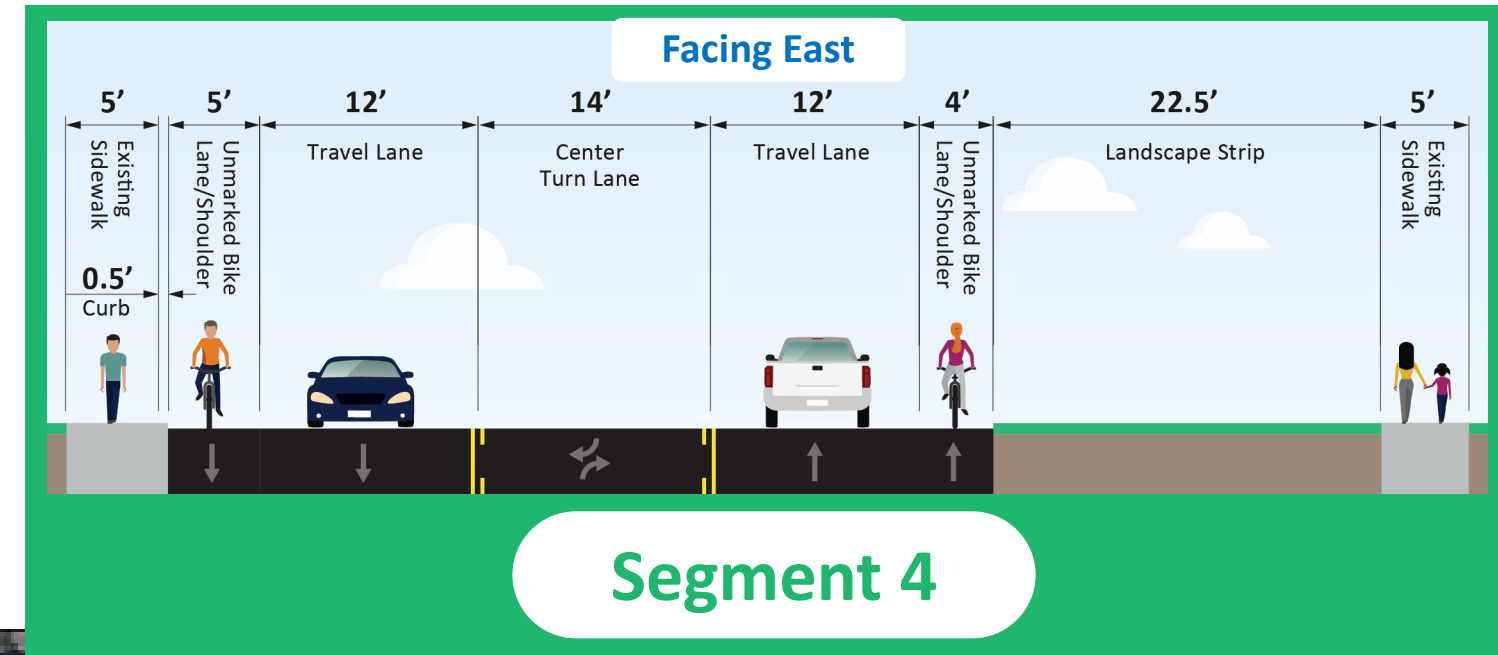
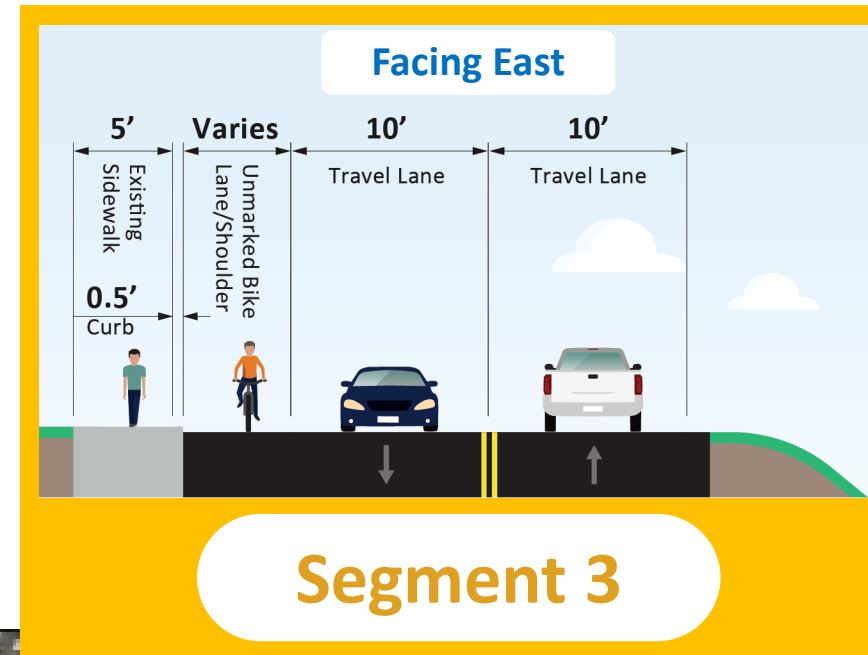
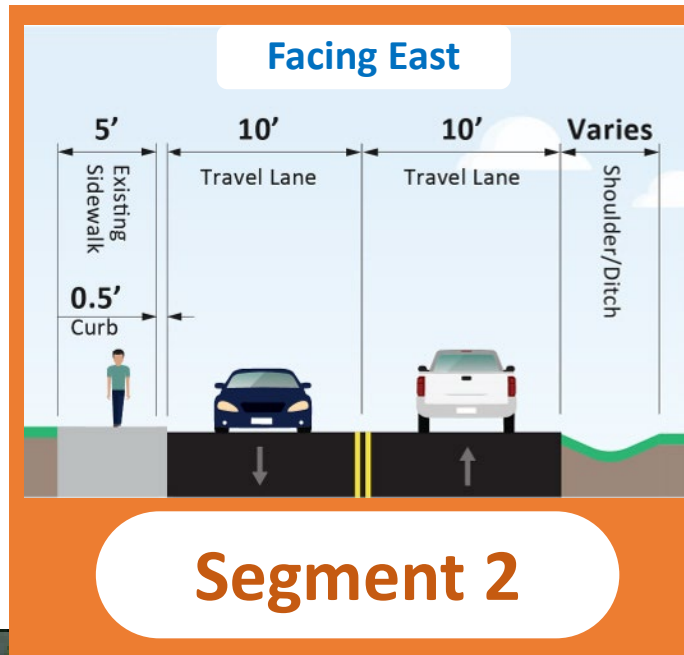
AADT: Annual Average Daily Traffic

# → Current conditions map: West portion





# Current conditions map: East portion





# Current conditions: Phase 2 improvements



- Looking east toward 178th Avenue-PCC entrance intersection
- 10-foot shared use path and 7-foot buffered bike lane on north side
- 5-foot separated sidewalk and 7-foot buffered bike lane on south side



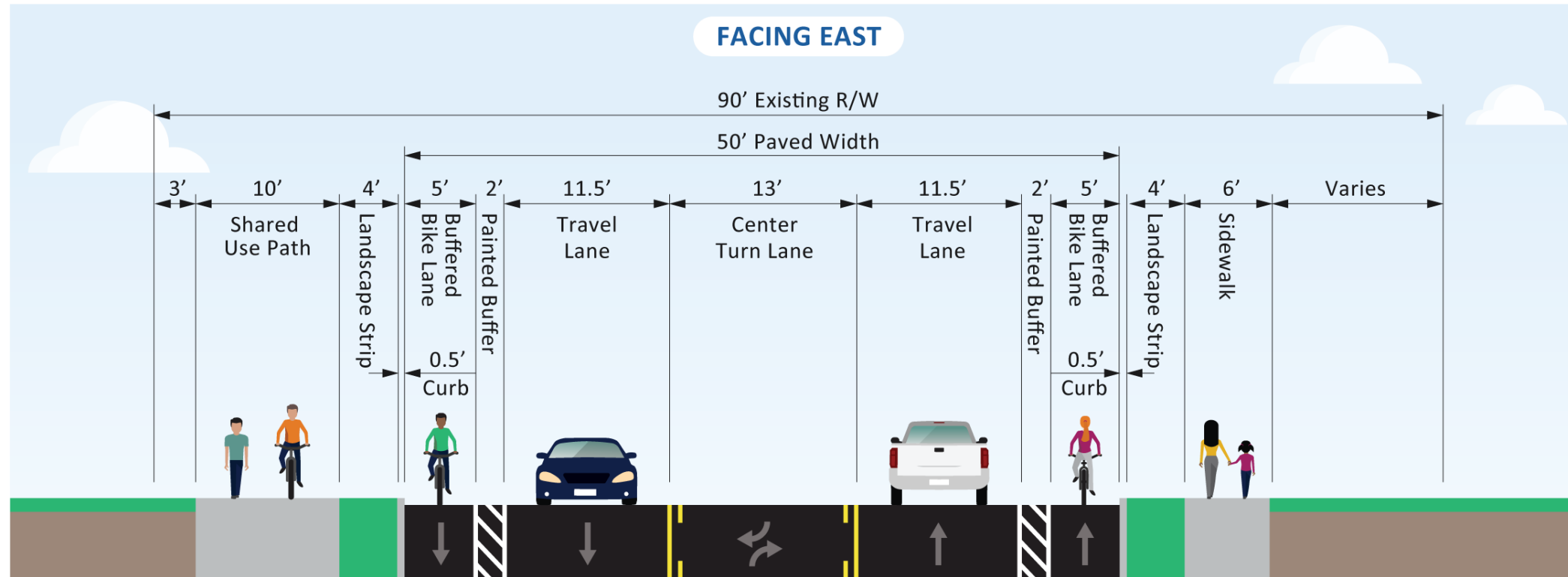
# Current conditions: Phase 3 improvements



- East of Joss Avenue looking east (recently completed Phase 3 improvement)
- 5-foot curb-tight sidewalk and 7-foot buffered bike lane on north side
- Separated 5-foot sidewalk and 7-foot buffered bike lane on south side

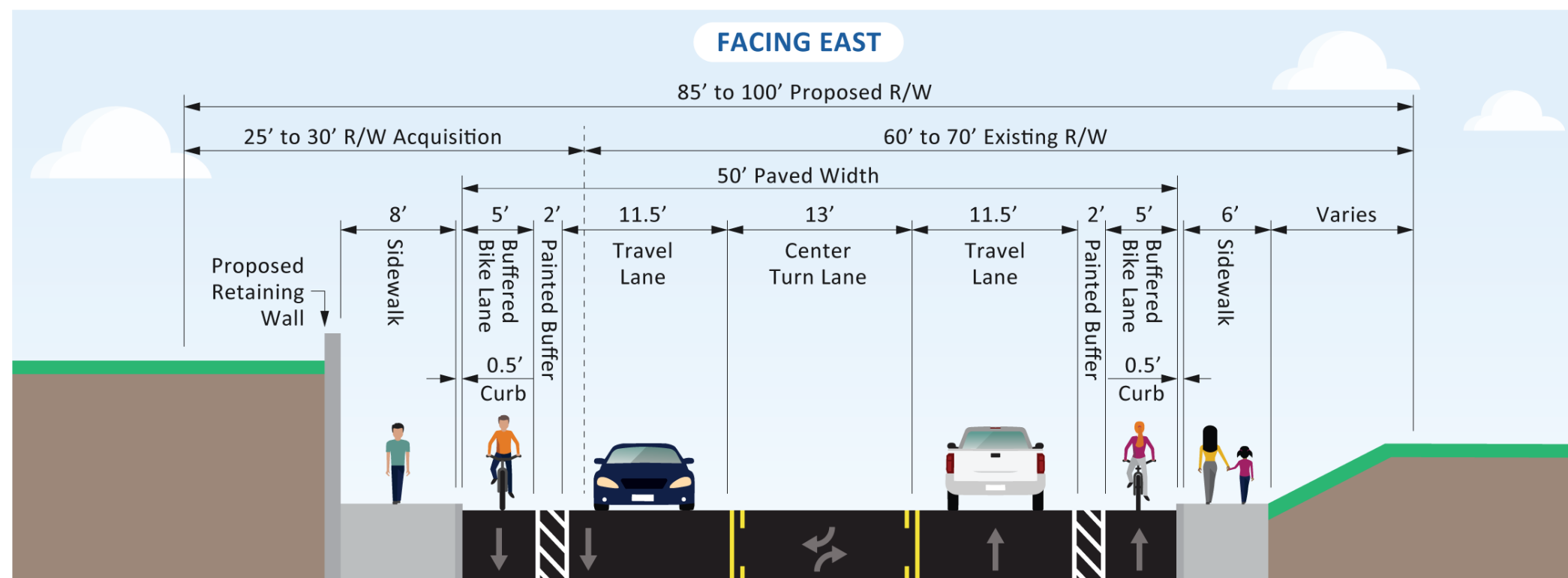


# Alternative #1: Buffered bike lanes



**Segment 1:**  
Concordia Court  
to 173rd Avenue

*(matches existing Phase 2  
improvements to the  
west)*

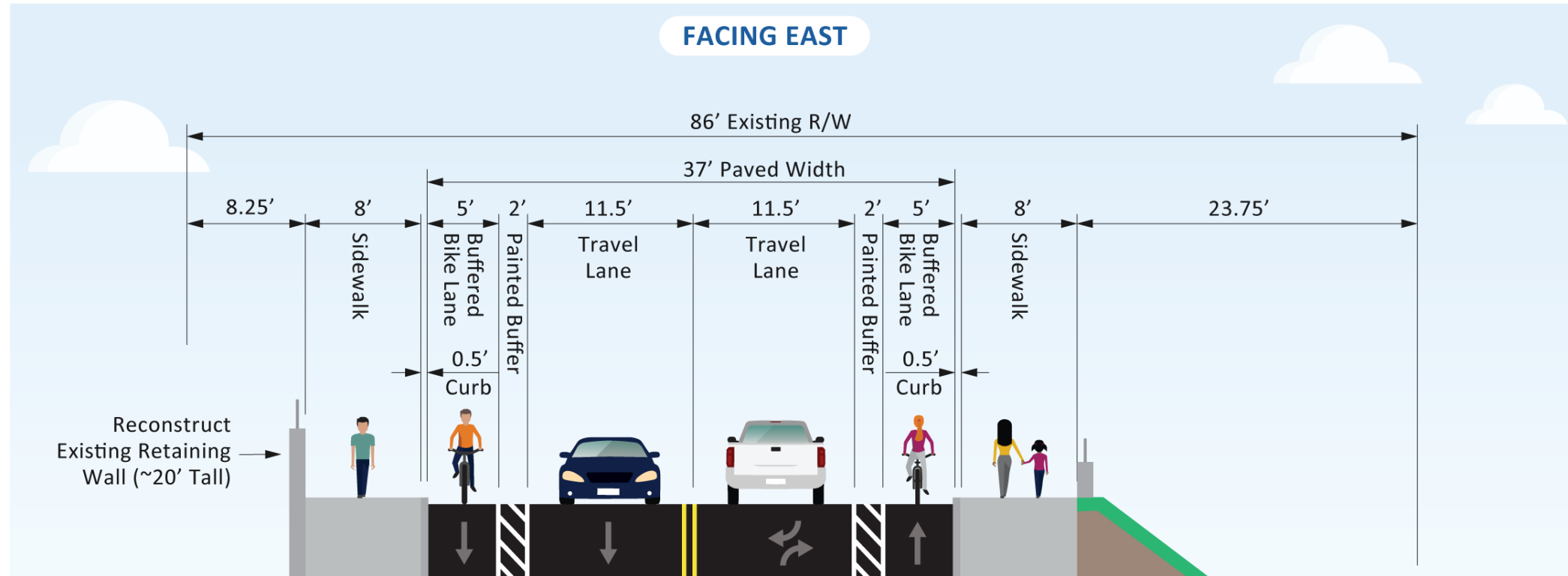


**Segment 2:**  
Near Samuel Drive

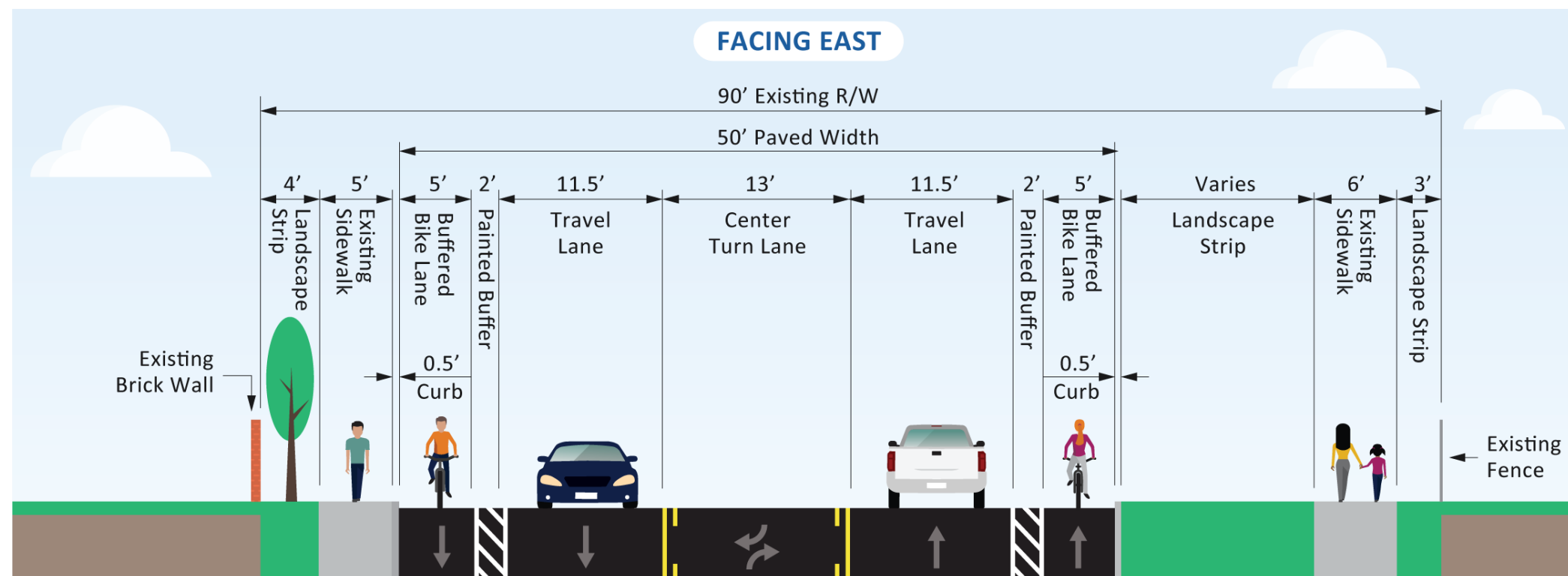




# Alternative #1: Buffered bike lanes



**Segment 3:**  
East culvert crossing

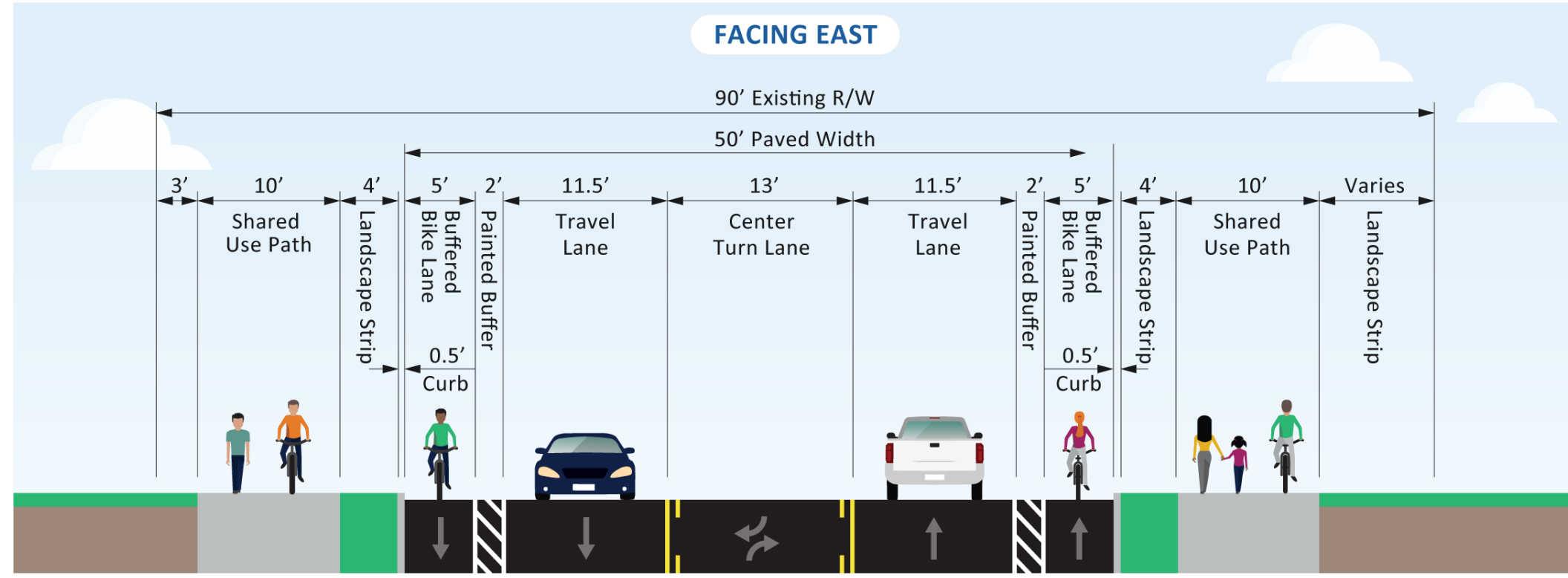


**Segment 4:**  
East of culvert crossing  
to Joss Avenue

*(matches existing Phase 3 improvements to the east)*

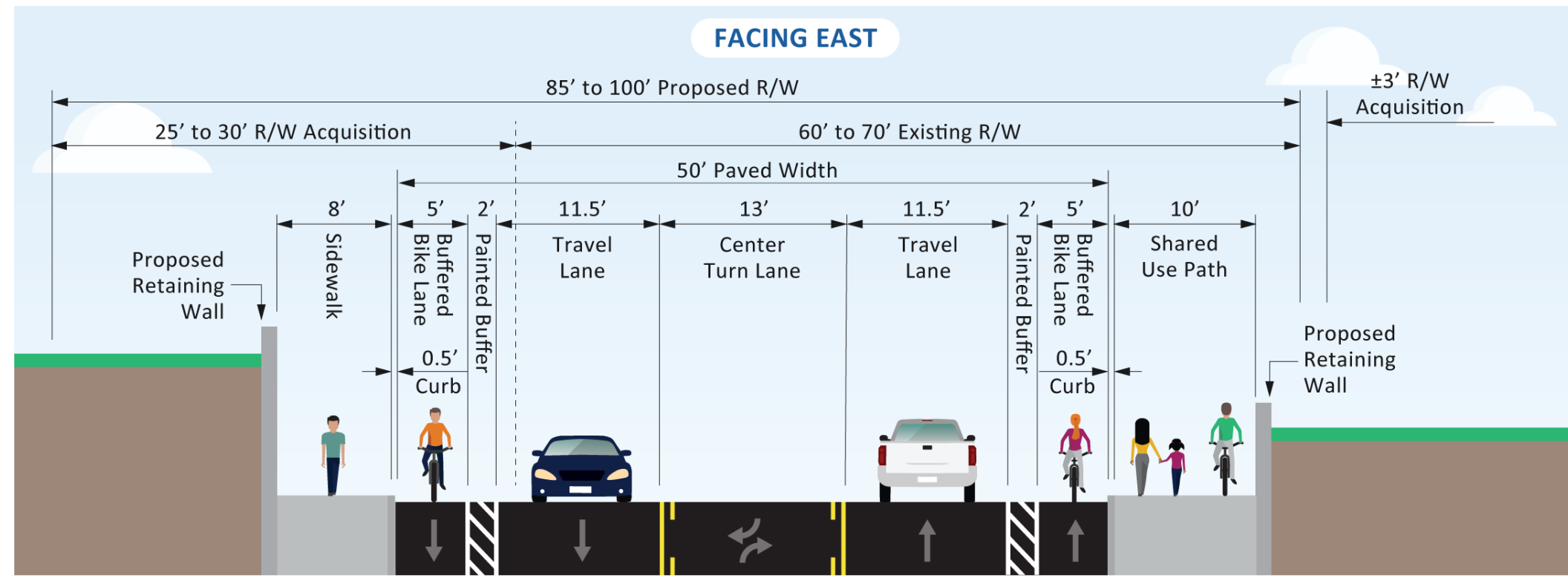


# Alternative #2: Buffered bike lanes and multiuse path



## Segment 1: Concordia Court to 173rd Avenue

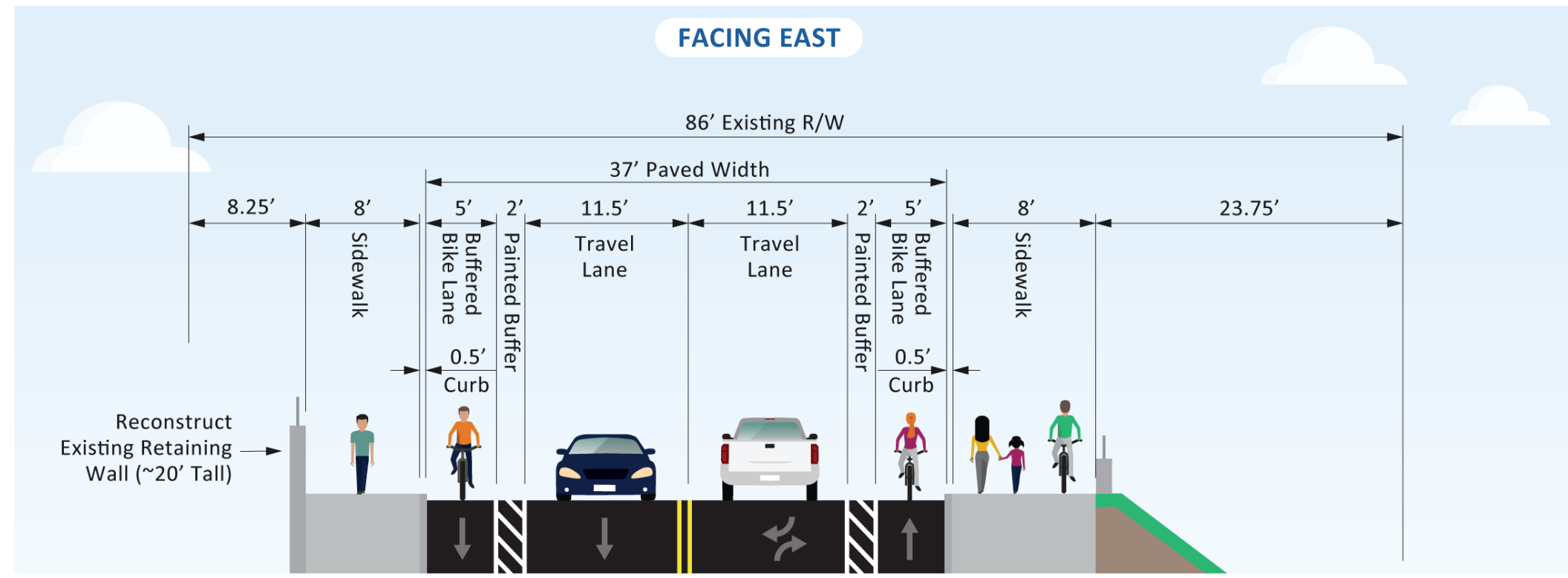
*(Multiuse path would cross from north to south side at existing pedestrian crossing at 173rd Avenue)*



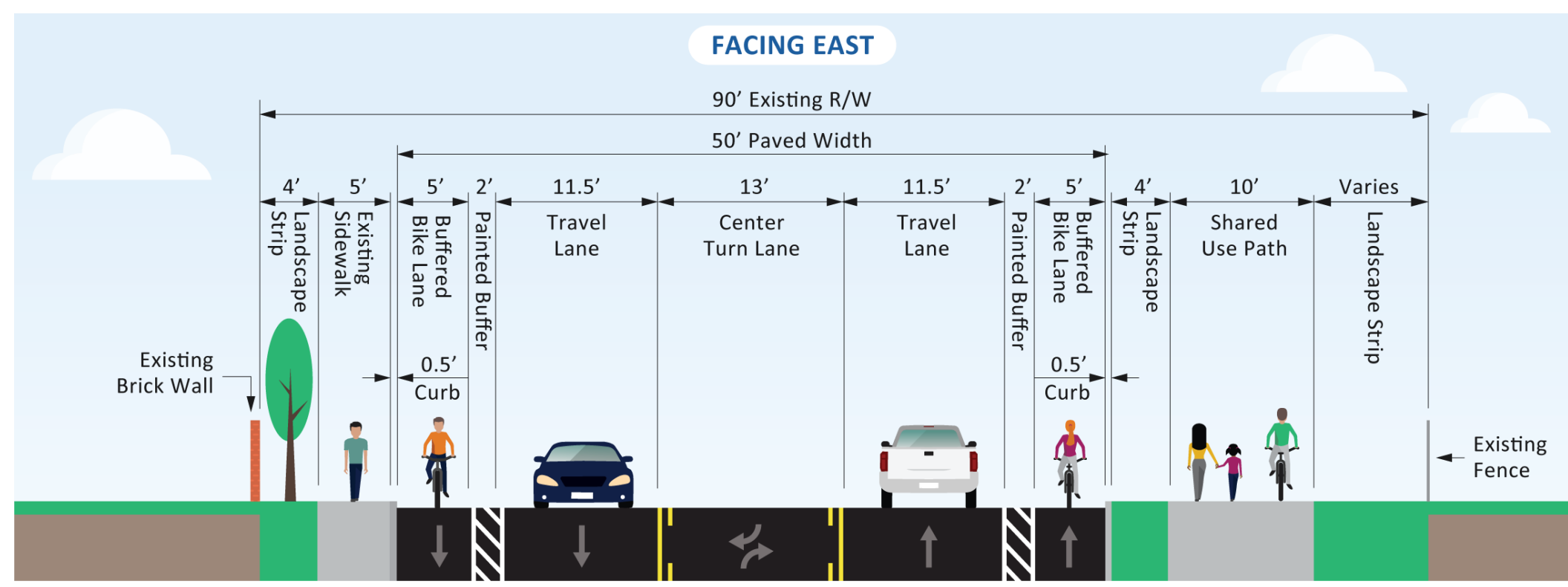
## Segment 2: Near Samuel Drive



# Alternative #2: Buffered bike lanes and multiuse path



**Segment 3:**  
East culvert crossing



**Segment 4:**  
East of east  
culvert crossing to  
Joss Avenue

*(Shared multiuse path  
would end at Joss Avenue)*



# Next steps

- Present bicycle facility alternatives to the Board of County Commissioners
- Begin engineering design
- Open house anticipated spring/summer 2022
- Right-of-way acquisition and permitting
- Finalize engineering design
- Meet the contractor open house
- Construction anticipated spring 2023-fall 2024

---

## STAFF CONTACT

Andy Morris, Project Manager

[andrew\\_morris@co.washington.or.us](mailto:andrew_morris@co.washington.or.us)

---



Land Use & Transportation  
[www.co.washington.or.us](http://www.co.washington.or.us)