

Executive Summary

Hazard mitigation is any sustained action that reduces or eliminates long-term risk to people and property from natural hazards and their effects. The impact of anticipated yet unpredictable natural events can be reduced through holistic planning and implementation of cost-effective, preventive mitigation efforts.

Participants in the Washington County Natural Hazard Mitigation Plan (NHMP) understand it is not only less costly to reduce vulnerability to disasters than to repeatedly repair damage, but that proactive steps should be taken where possible to protect the economy, environment, and most vulnerable citizens from inevitable natural hazard events.

This NHMP recognizes that local jurisdictions and special districts have the opportunity to address their vulnerability more comprehensively by identifying mitigation strategies during all phases of emergency management (preparedness, mitigation, response, and recovery). Though hazards cannot be eliminated, vulnerability to hazards can be reduced by improving understanding of the natural hazards faced and their potential impacts and by implementing mitigation strategies.

The 2023 NHMP presents the hazard impacts most likely to affect Washington County, including its cities and special districts, and mitigation strategies to reduce or eliminate the most significant vulnerabilities. This update to the 2017 Washington County NHMP adds eight new plan participants and the hazards of dam failure and extreme heat. It also provides updated hazard and risk data and analyses, mitigation strategies, and plan implementation details. The plan provides strategic direction to mitigate hazards and protect people, property, and the environment and increase resilience.

The plan fulfills the requirements of the Federal Disaster Mitigation Act of 2000 (DMA 2000) as administered by the Oregon Department of Emergency Management (OEM) and the Federal Emergency Management Agency (FEMA). The project was funded by the Fiscal Year 2019 FEMA Pre-Disaster Mitigation Grant (PDMC-PL-10-OR-2019-002). An Emergency Management Coordinator at the Washington County Department of Land Use and Transportation administered the grant and led the project.

The planning area for this plan is for Washington County, Oregon. Planning participants include the following jurisdictions and special districts:

- City of Beaverton¹
- City of Cornelius^{2, 3}
- City of Forest Grove^{2, 3}
- City of Hillsboro
- City of North Plains²
- City of Sherwood²
- City of Tigard
- Clean Water Services²
- Tualatin Hills Park & Recreation District²
- Tualatin Valley Water District²

¹ The City of Beaverton NHMP was adopted in 2020. This plan was updated and incorporated into the 2023 Washington County plan as the City's annex.

² Did not participate in the 2017 Washington County NHMP.

³ The cities of Cornelius and Forest Grove had a joint NHMP adopted in September 2011. The 2011 plan was updated and incorporated into this plan as separate annexes for the cities.

- Washington County

Figure 1 shows the locations of all participating jurisdictions and the service areas of participating special districts. The unincorporated areas of the County fall under Washington County's purview.

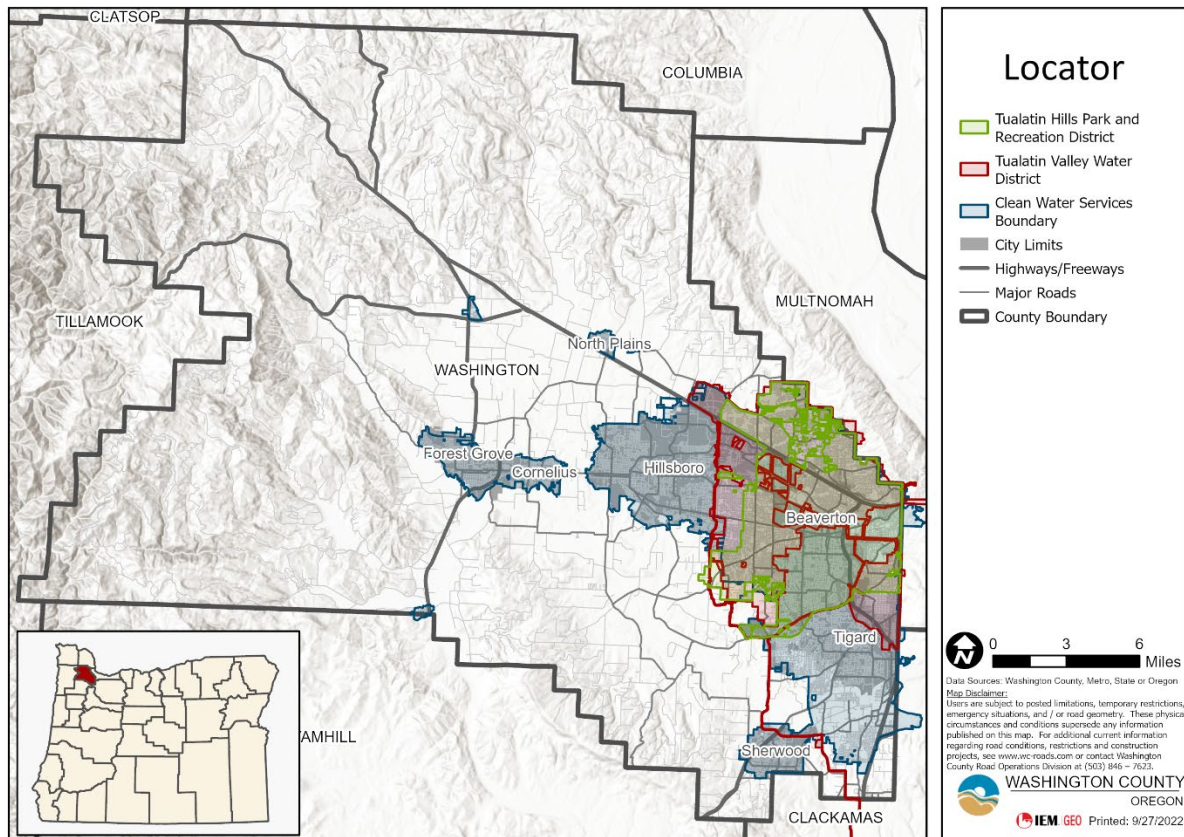


Figure 1: Washington County Natural Hazards Mitigation Plan Planning Area

The NHMP Steering Committee identified the following hazards in the planning area. These hazards are profiled in Section 2 of this plan, and specific hazard risk and vulnerability information unique to each participant is presented in the respective participant annexes. These hazards are shown in alphabetical order.

- Dam failure⁴
- Drought
- Earthquake
- Extreme heat⁵
- Flooding
- Landslide
- Volcanic ash
- Wildland fire
- Windstorm, including tornado
- Winter storm

⁴ New hazard for the 2023 NHMP update

⁵ New hazard for the 2023 NHMP update

Data collection periods during the planning process varied for planning participants, depending on their previous NHMP participation, and are shown in Table 1.

Table 1: Data Collection Periods for Planning Participants

Participant	Data Collection Period	
	From	To
Washington County and the cities of Tigard and Hillsboro	11/1/2016	2/22/2022
City of Beaverton	1/1/2020	2/22/2022
Cities of Cornelius and Forest Grove	9/1/2011	2/22/2022
All other participants	As far back as was available	2/22/2022

The format of this plan, presented in three volumes, is designed to provide a user-friendly source for all hazard information for participants.

Volume I:

- Promulgation
- Record of Distribution
- Record of Changes
- Executive Summary
- Abbreviations and Acronyms
- Table of Contents
- Section 1: Introduction
- Section 2: Hazard Identification and Risk Assessment
- Section 3: Mitigation Strategy
- Section 4: Plan Execution, Maintenance, and Adoption

Volume II:

- Table of Contents
- Planning Participant Annexes:
 - Annex A: City of Beaverton
 - Annex B: City of Cornelius
 - Annex C: City of Forest Grove
 - Annex D: City of Hillsboro
 - Annex E: City of North Plains
 - Annex F: City of Sherwood
 - Annex G: City of Tigard
 - Annex H: Clean Water Services
 - Annex I: Tualatin Hills Park & Recreation District
 - Annex J: Tualatin Valley Water District
 - Annex K: Washington County

Volume III:

- Table of Contents
- Appendix A: Planning Area Profile

- Appendix B: Planning Process and Public Engagement
- Appendix C: Implementation Resources and Funding Opportunities

The Washington County 2023 NHMP will be a useful tool for all participants, communities, and their stakeholders to use to increase public awareness about local hazards and risks while providing information about options and resources available to reduce those risks. Informing the public about potential hazards will enable informed decision-making on where to live, purchase property, or locate businesses and will help each jurisdiction and special district protect themselves against the effects of the identified hazards.